

**STANDARD ARRIVAL CHART  
INSTRUMENT (STAR) - ICAO**

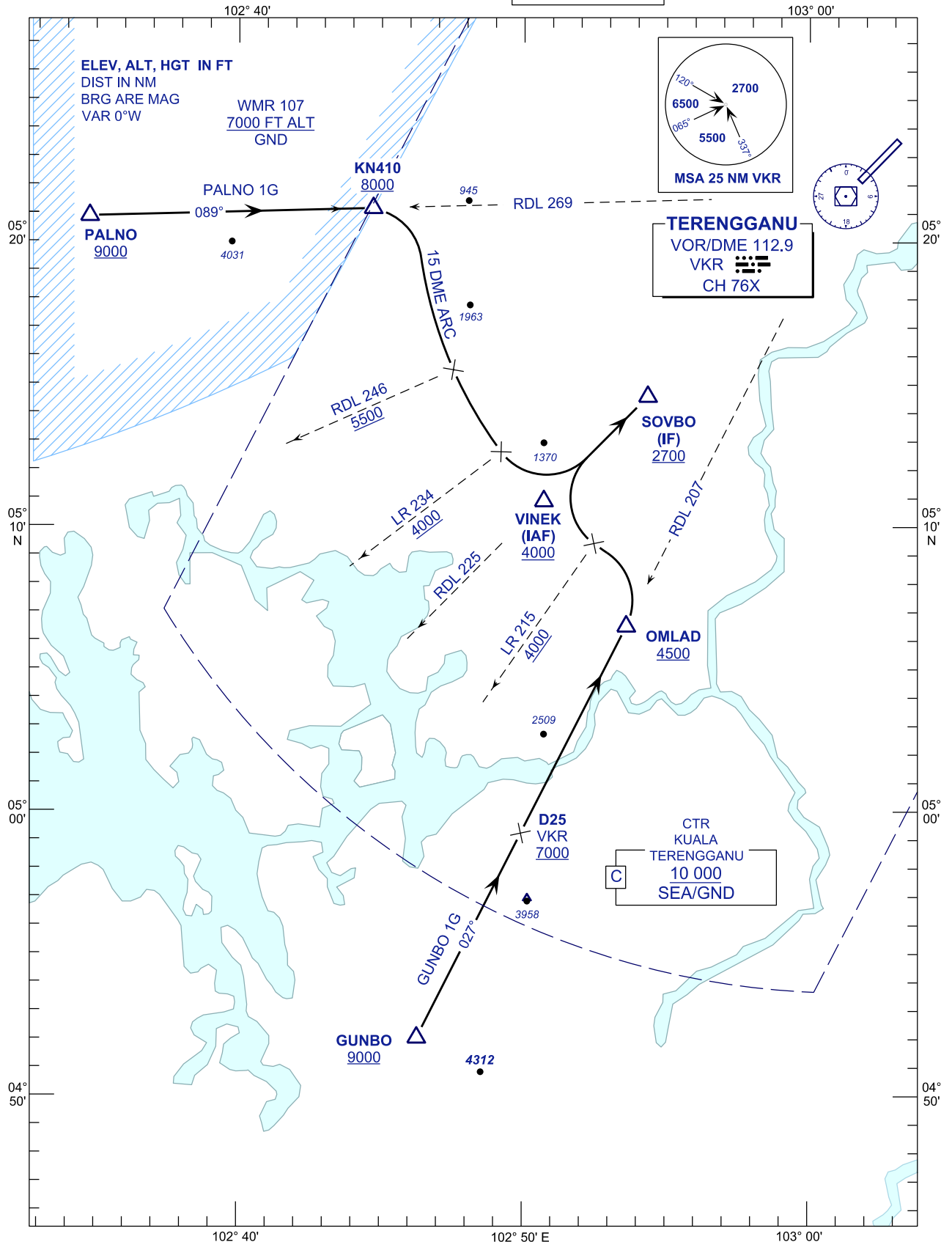
TRANSITION ALTITUDE  
11 000 FT

TWR	123.6 (PRY)
	119.05 (SRY)
	235.32 (UHF)
	121.5 (EMERG)
SMC	121.6
ATIS	126.65

**KUALA TERENGGANU/  
SULTAN MAHMUD (WMKN)**

**VOR/DME ARC RWY 04**  
PALNO 1G GUNBO 1G

BANK ANGLE : 25° OR 3°/SEC



CHANGES : ATS COMMUNICATION FREQUENCIES