

**STANDARD ARRIVAL CHART
INSTRUMENT (STAR) - ICAO**

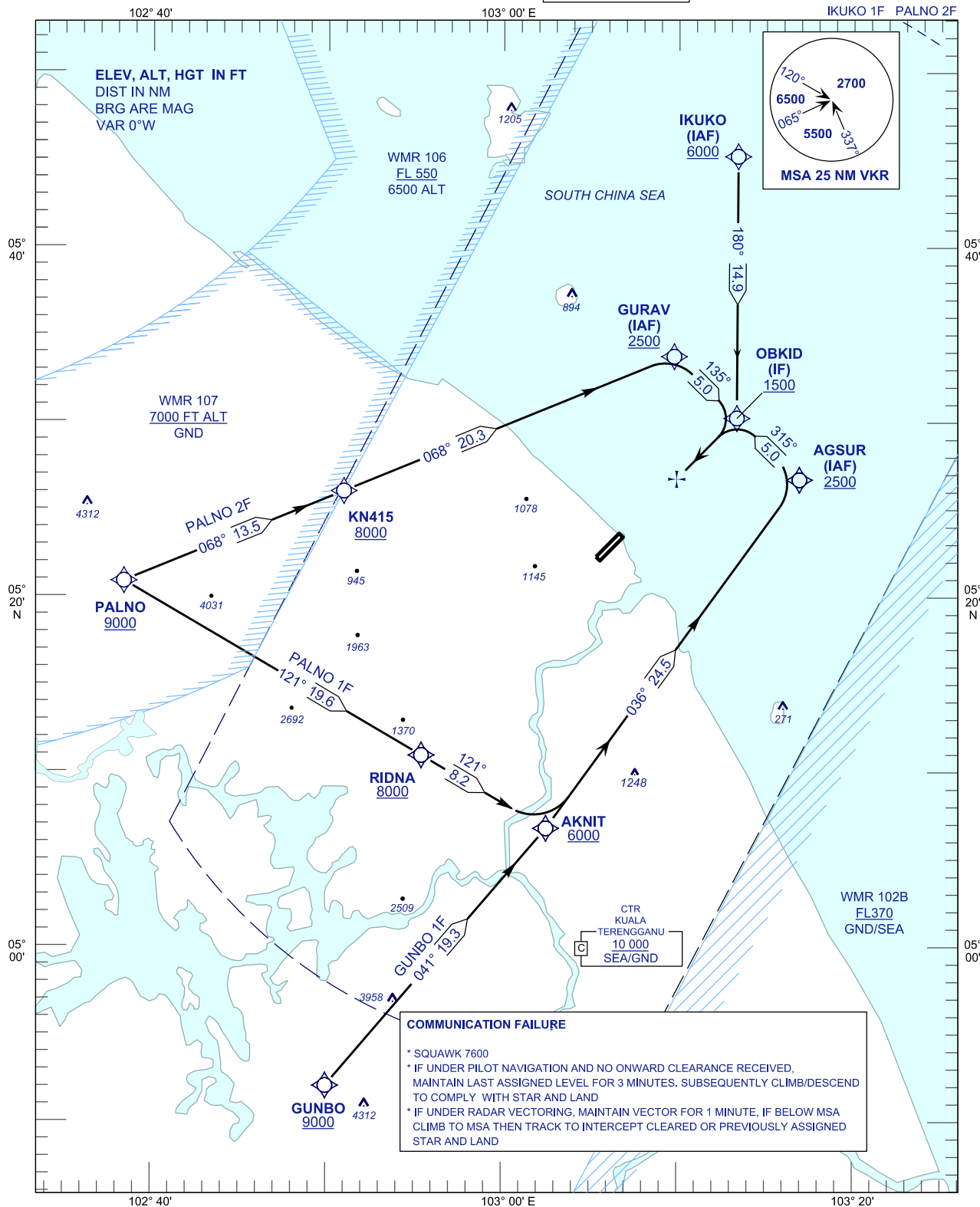
TRANSITION ALTITUDE
11 000 FT

TWR	123.6 (PRY)
	119.05 (SRV)
	235.32 (UHF)
	121.5 (EMERG)
SMC	121.6
ATIS	126.65

**KUALA TERENGGANU/
SULTAN MAHMUD (WMKN)**

RNAV (GNSS) RWY 22

PALNO 1F GUNBO 1F
IKUKO 1F PALNO 2F



CHANGES : ATS COMMUNICATION FREQUENCIES