

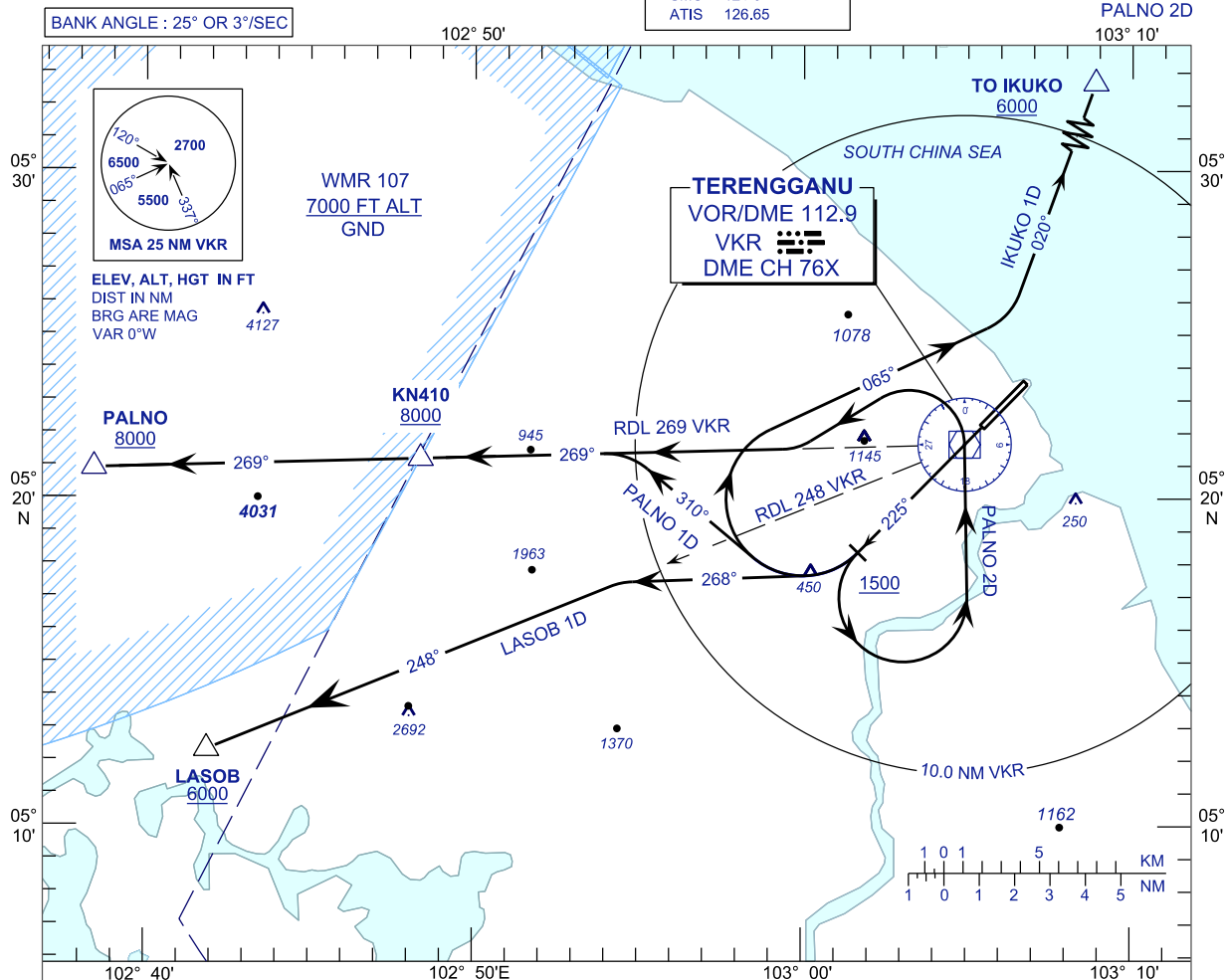
**STANDARD DEPARTURE CHART
INSTRUMENT (SID) - ICAO**

**KUALA TERENGGANU/
SULTAN MAHMUD (WMKN)
RWY 22**

TRANSITION ALTITUDE
11 000 FT

TWR 123.6 (PRY)
119.05 (SRY)
235.32 (UHF)
121.5 (EMERG)
SMC 121.6
ATIS 126.65

PALNO 1D LASOB 1D IKUKO 1D
PALNO 2D



INITIAL CLIMB PROCEDURE	DESIGNATOR	SID DESCRIPTION
TRACK 225° AT OR ABOVE 1500 FT THEN TURN RIGHT NOTE: MINIMUM CLIMB GRADIENT 4.5%	IKUKO 1D	TRACK 065° TO INTERCEPT RDL020 VOR VOR OUTBOUND TO IKUKO THEN R208 NOTE: MINIMUM CLIMB GRADIENT 4.5% UNTIL COMPLETE TURN
	PALNO 1D	TRACK 310° TO INTERCEPT RDL269 VOR VOR OUTBOUND TO PALNO THEN M751/W540 (NORTHBOUND) NOTE: MINIMUM CLIMB GRADIENT 4.5% UNTIL PALNO
	LASOB 1D	TRACK 268° TO INTERCEPT RDL248 VOR VOR OUTBOUND TO LASOB THEN Y346 (SOUTHBOUND) NOTE: MINIMUM CLIMB GRADIENT 4.0% UNTIL LASOB
TRACK 225° AT OR ABOVE 1500 FT THEN TURN LEFT NOTE: MINIMUM CLIMB GRADIENT 4.5%	PALNO 2D NOTE: TO BE USED DURING WMR107 ACTIVE	DIRECT TO VOR THEN CONTINUE ON RDL269 VOR VOR OUTBOUND TO KN410 AT 8000 FT OR ABOVE. AFTER THAT DIRECT TO PALNO THEN M751/W540 (NORTHBOUND) NOTE: MINIMUM CLIMB GRADIENT 4.5% UNTIL 5000FT

RATE OF CLIMB (FT/MIN)							
GND SPEED - KT		120	150	180	210	240	270
GRADIENT	3.3%	401	501	602	702	802	902
	4.0%	486	608	729	851	972	1094
	4.5%	547	684	820	957	1094	1230

CHANGES : ATS COMMUNICATION FREQUENCIES