

**STANDARD DEPARTURE CHART
INSTRUMENT (SID) - ICAO**

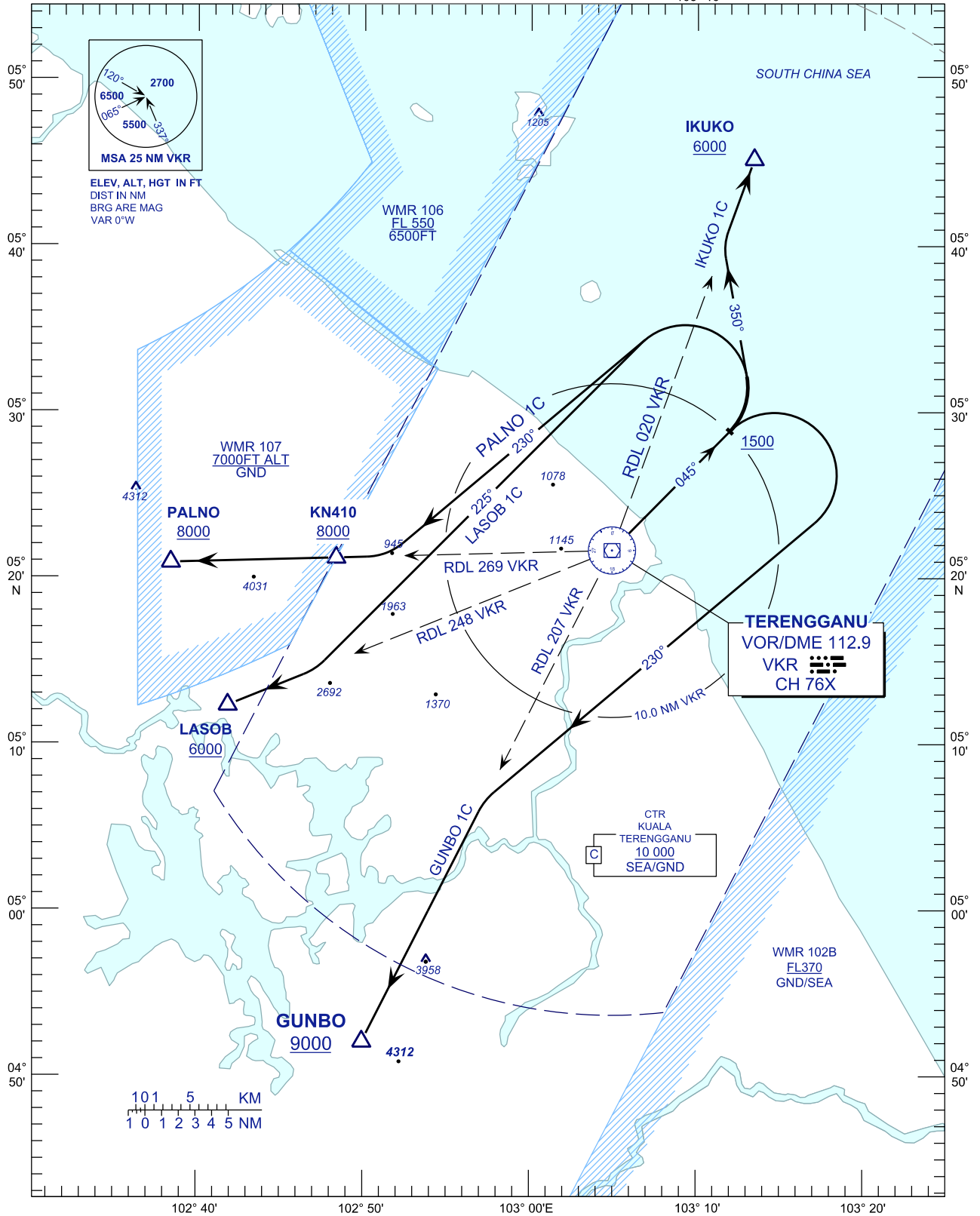
TRANSITION ALTITUDE
11 000 FT

TWR	123.6 (PRY)
	119.05 (SRY)
	235.32 (UHF)
	121.5 (EMERG)
SMC	121.6
ATIS	126.65

**KUALA TERENGGANU/
SULTAN MAHMUD (WMKN)
RWY 04**

IKUKO 1C LASOB 1C
GUNBO 1C PALNO 1C

BANK ANGLE : 25° OR 3°/SEC



CHANGES : ATS COMMUNICATION FREQUENCIES