

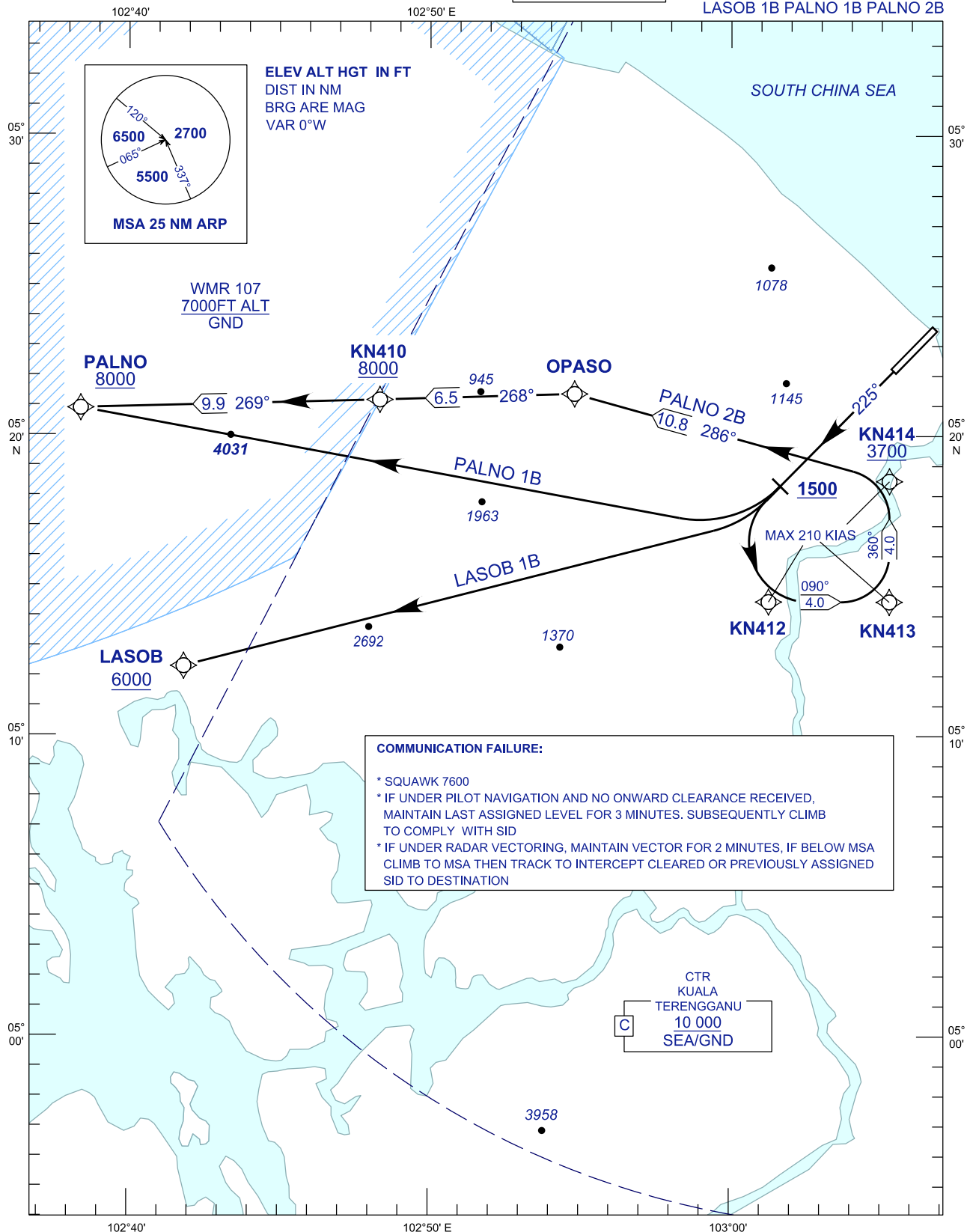
**STANDARD DEPARTURE CHART  
INSTRUMENT (SID) - ICAO**

**KUALA TERENGGANU/  
SULTAN MAHMUD (WMKN)**

TRANSITION ALTITUDE  
11 000 FT

TWR	123.6 (PRY)
	119.05 (SRY)
	235.32 (UHF)
	121.5 (EMERG)
SMC	121.6
ATIS	126.65

**RNAV (GNSS) RWY 22**  
LASOB 1B PALNO 1B PALNO 2B



CHANGES : ATS COMMUNICATION FREQUENCIES