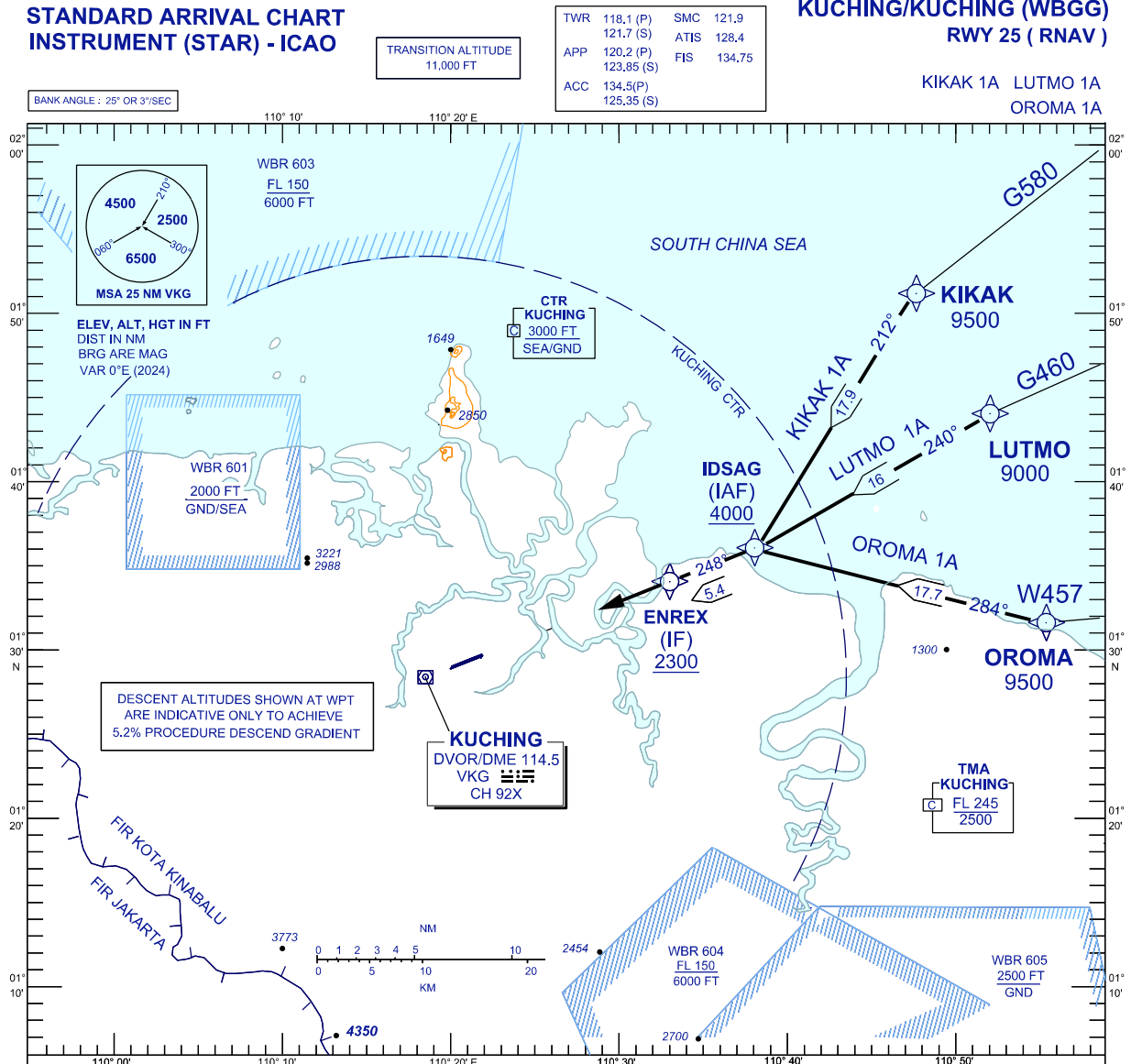


**STANDARD ARRIVAL CHART
INSTRUMENT (STAR) - ICAO**

**KUCHING/KUCHING (WBGG)
RWY 25 (RNAV)**



TWR	118.1 (P)	SMC	121.9
	121.7 (S)	ATIS	128.4
APP	120.2 (P)	FIS	134.75
	123.85 (S)		
ACC	134.5 (P)		
	125.35 (S)		

KIKAK 1A LUTMO 1A
OROMA 1A

ARRIVALS

- KIKAK ONE ALPHA** : FROM KIKAK TRACK TO IDSAG, THEN TRACK TO ENREX,
- LUTMO ONE ALPHA** : FROM LUTMO TRACK TO IDSAG, THEN TRACK TO ENREX,
- OROMA ONE ALPHA** : FROM OROMA TRACK TO IDSAG, THEN TRACK TO ENREX,

FROM ENREX INTERCEPT LOC IKG FOR ILS Z/LOC Z RWY 25 OR INTERCERPT RDL 070 VKG FOR VOR Z RWY 25.

VERTICAL RESTRICTIONS :

ADHERE TO VERTICAL RESTRICTIONS eg. 4000 = NOT BELOW 4000 FT ON DESCENT UNLESS SPECIFICALLY CANCELLED BY ATC.

COMMUNICATIONS FAILURE :

- * SQUAWK 7600
- * IF UNDER PILOT NAVIGATION, CONTINUE ON STAR AND LAND
- * IF UNDER RADAR VECTORED, MAINTAIN VECTOR FOR 1 MINUTE, IF BELOW MSA, CLIMB TO MSA, THEN TRACK TO INTERCEPT CLEARED OR PREVIOUSLY ASSIGNED STAR AND LAND

REPLACEMENT CHART