

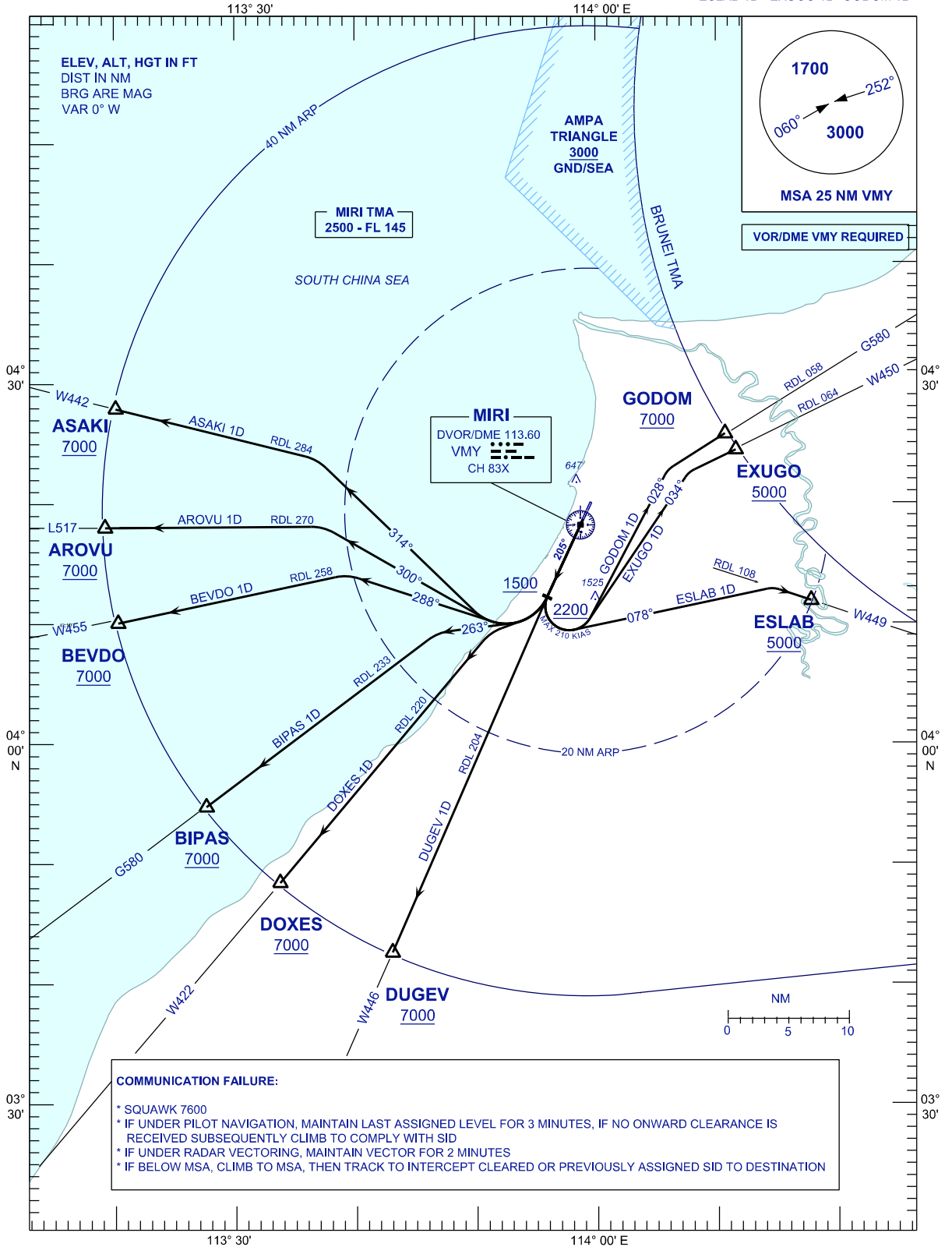
**STANDARD DEPARTURE CHART
INSTRUMENT (SID) - ICAO**

TRANSITION ALTITUDE
11 000 FT

APP 129.9(P)
122.7(S)
TWR 123.3
SMC 121.9
CATIS 127.0

**MIRI/MIRI (WBGR)
RWY 20**

ASAKI 1D AROVU 1D BEVDO 1D
BIPAS 1D DOXES 1D DUGEV 1D
ESLAB 1D EXUGO 1D GODOM 1D



CHANGES : OBSTACLE HEIGHT