

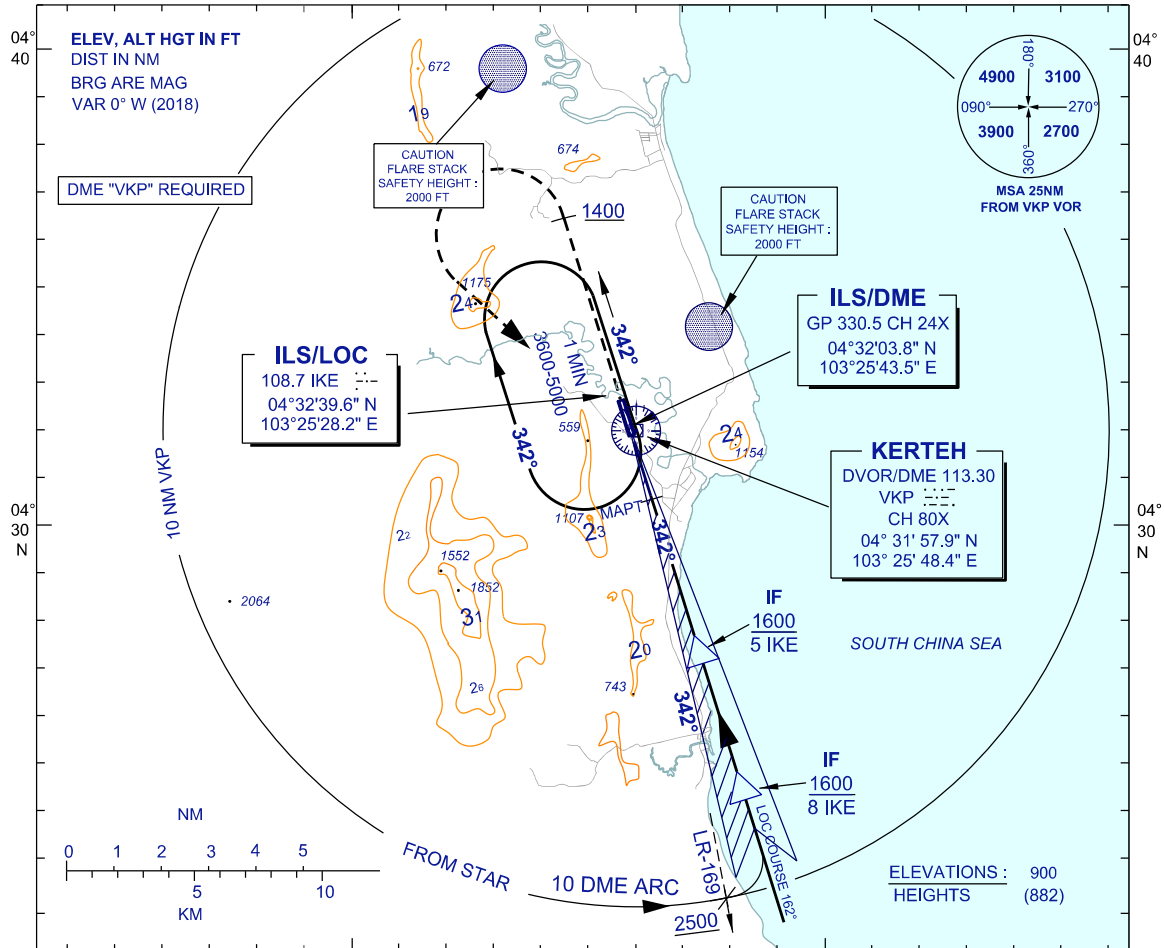
INSTRUMENT APPROACH CHART - ICAO

AERODROME ELEV 18 FT
HEIGHTS RELATED TO THR RWY 34 - ELEV 18 FT

TWR 123.3
258.5
SMC 121.8
ATIS 128.25

KERTEH/KERTEH (WMKE)
RWY 34

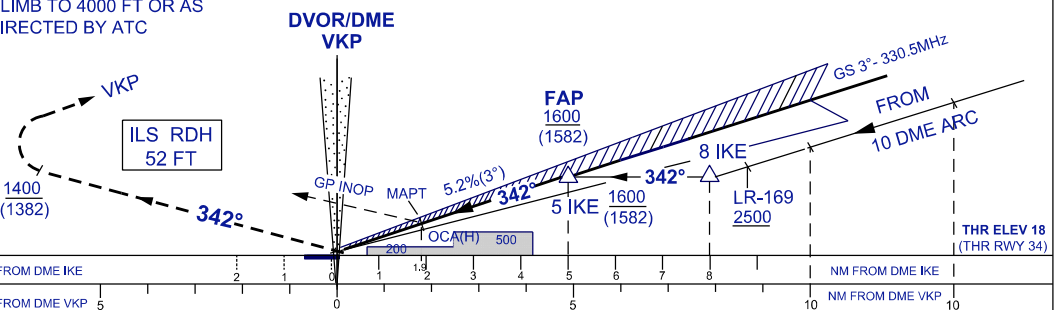
ILS Z OR LOC Z



TRANSITION ALT 11000

DIST BY DME (IKE)	5	4	3	1.9
ALT 3° APCH PATH (FT)	1600 (1582)	1282 (1264)	964 (946)	620 (602)

MISSED APPROACH
CLIMB ON TRACK 342° TO 1400 FT
TURN LEFT TRACK TO VKP HOLD
CLIMB TO 4000 FT OR AS DIRECTED BY ATC



NM FROM DME IKE	5	4	3	2	1	0	1	2	3	4	5	6	7	8	9	10	NM FROM DME IKE
NM FROM DME VKP	5	4	3	2	1	0	1	2	3	4	5	6	7	8	9	10	NM FROM DME VKP

OCA (H) FT		A	B	GROUND SPEED(KT)			
STRAIGHT-IN APPROACH	CAT 1	300(282)	310(292)	70	90	110	140
	LOC	620(602)/1.9 DME		FAP - MAPT = 3.1 NM			
CIRCLING/MNMM VIS (NM)		CIRCLING NOT PERMITTED		MIN : SEC		FT/ MIN	
				2:35	2:04	1:50	1:20
				379		474 535 738	

CHANGES : IN PROFILE VIEW LEAD RADIAL LR171 TO READ AS LR169.