

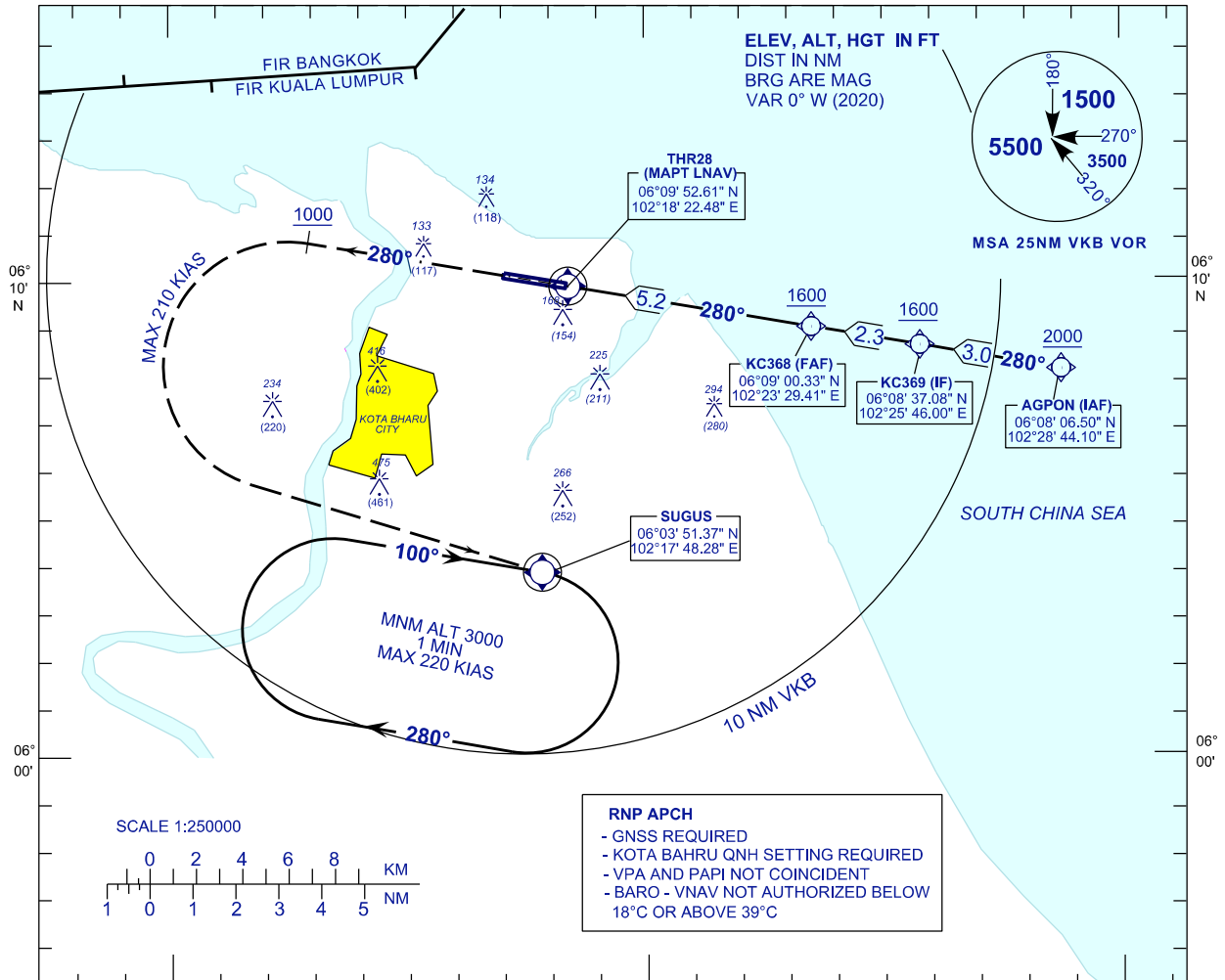
**INSTRUMENT  
APPROACH  
CHART - ICAO**

**AERODROME ELEV 16FT**  
HEIGHT RELATED TO  
THR RWY28 - ELEV 13 FT

APP	120.85,130.3
TWR	122.5
SMC	121.6
ATIS	128.85

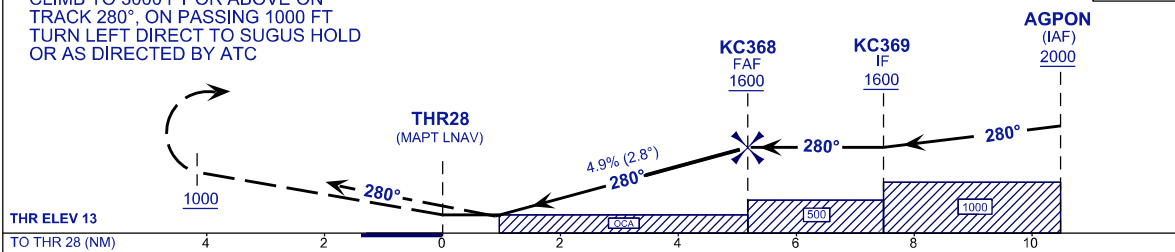
**KOTA BHARU/  
SULTAN ISMAIL PETRA (WMKC)**

RNP Y RWY 28



**RNP APCH**  
- GNSS REQUIRED  
- KOTA BHARU QNH SETTING REQUIRED  
- VPA AND PAPI NOT COINCIDENT  
- BARO - VNAV NOT AUTHORIZED BELOW 18°C OR ABOVE 39°C

**MISSED APPROACH:**  
CLIMB TO 3000 FT OR ABOVE ON TRACK 280°. ON PASSING 1000 FT TURN LEFT DIRECT TO SUGUS HOLD OR AS DIRECTED BY ATC



OCA (OCH)	A	B	C	D
LNAV	400 (387)			
LNAV/VNAV	350 (337)	360 (347)	370 (357)	380 (367)

DIST RWY28	NM	5.2	4.2	3.2	2.2	1.3
ALTITUDE	FT	1600	1280	980	680	400
GS	KT	100	120	140	160	180
FAF - RW28 (5.2 NM)	MIN:SEC	3:06	2:36	2:13	1:57	1:44
RATE OF DESCEND (297 FT / NM)	FT/MIN	490	590	690	790	890

CHANGES : CHART UPDATED