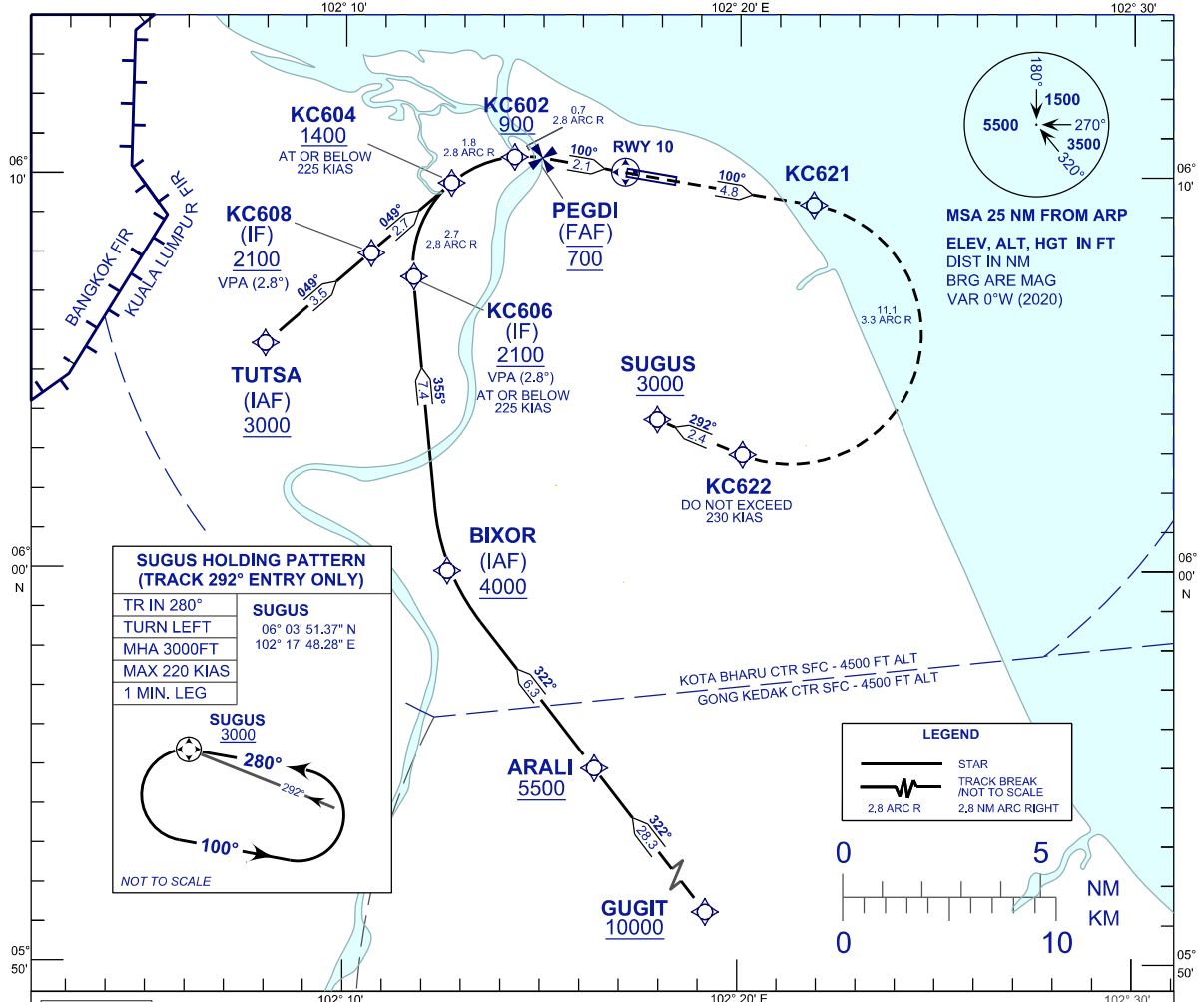


**INSTRUMENT
APPROACH
CHART - ICAO**

AERODROME ELEV 16 FT
HEIGHT RELATED TO
THR RWY 10 - ELEV 16 FT

APP 120.85, 130.3
TWR 122.5
SMC 121.6
ATIS 128.85

**KOTA BHARU/
SULTAN ISMAIL PETRA (WMKC)**
RNP Z RWY 10 (AR)



**SUGUS HOLDING PATTERN
(TRACK 292° ENTRY ONLY)**

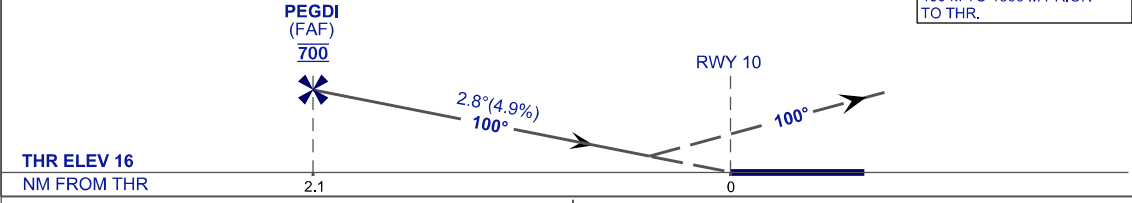
TR IN 280°	SUGUS
TURN LEFT	06° 03' 51.37" N
MHA 3000FT	102° 17' 48.28" E
MAX 220 KIAS	
1 MIN. LEG	

NOT TO SCALE

VPA 2.8°
RDH 50 FT

MISSED APPROACH
CLIMB TO 3000 FT OR ABOVE ON RNP MISSED APPROACH TRACK
TO SUGUS HOLD OR AS DIRECTED BY ATC.

TRANSITION LEVEL FL130
TRANSITION ALT 11000 FT
VSS PENETRATIONS FROM
400 M TO 1300 M PRIOR
TO THR.



STRAIGHT-IN APPROACH	OCA (OCH)	
CATEGORY OF AIRCRAFT	C	D
RNP (0.30)	445 (429)	
CIRCLING AND ALTERNATE N/A		

AUTHORIZATION REQUIRED

- NOTES:**
- 1) APPROACH NOT AUTHORIZED WHEN AIRPORT TEMPERATURE BELOW 18°C OR ABOVE 39°C.
 - 2) RF REQUIRED.
 - 3) WMKC ALTIMETER SETTING REQUIRED.
 - 4) GNSS REQUIRED.
 - 5) PAPI AND VERTICAL PATH ANGLE NOT COINCIDENT.
 - 6) RNP 1.0 REQUIRED FROM GUGIT TO IAF.
 - 7) RNP 0.3 REQUIRED FROM IAF'S TO FAF.
 - 8) DUE TO GONG KEDAK CTR, MAINTIAN 4500 FT OR ABOVE UNTIL 4.5 NM TO BIXOR.

CHANGES : CHART UPDATED