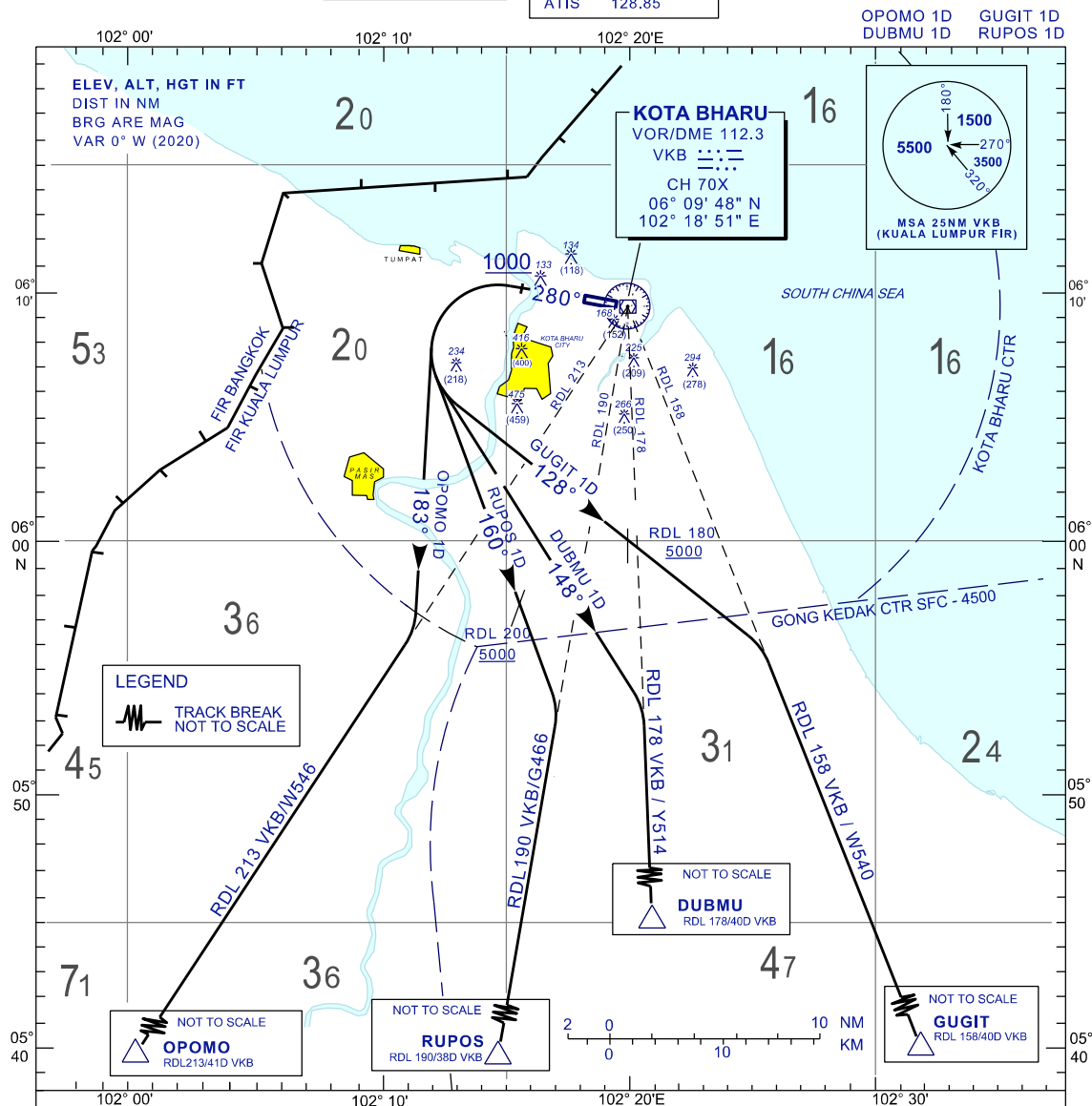


**STANDARD DEPARTURE CHART  
INSTRUMENT (SID) - ICAO**

**KOTA BHARU/  
SULTAN ISMAIL PETRA (WMKC)  
RWY 28**

TRANSITION ALTITUDE  
11 000 FT

APP 120.85,130.3  
TWR 122.5  
SMC 121.6  
ATIS 128.85



**RUPOS ONE DELTA DEPARTURE (RUPOS 1D)**

TRACK HEADING 280° AT 1000FT TURN LEFT  
HEADING 160° TO INTERCEPT RDL190 VKB  
VOR TO RUPOS / G466

NOTE\*  
1. PDG 5.2% UNTIL REACHING 5000FT  
2. CROSS R-200 VKB VOR AT 5000FT OR ABOVE

**OPOMO ONE DELTA DEPARTURE (OPOMO 1D)**

TRACK HEADING 280° AT 1000FT TURN LEFT  
HEADING 183° TO INTERCEPT RDL213 VKB  
VOR TO OPOMO / W546

NOTE\*  
1. PDG 5.2% UNTIL REACHING 5000FT

**GUGIT ONE DELTA DEPARTURE (GUGIT 1D)**

TRACK HEADING 280° AT 1000FT TURN LEFT  
HEADING 128° TO INTERCEPT RDL158 VKB VOR TO GUGIT / W540

NOTE\*  
1. PDG 5.2% UNTIL REACHING 5000FT  
2. CROSS RDL 180 VKB VOR AT 5000FT OR ABOVE

**DUBMU ONE DELTA DEPARTURE (DUBMU 1D)**

TRACK HEADING 280° AT 1000FT TURN LEFT  
HEADING 148° TO INTERCEPT RDL178 VKB VOR TO DUBMU / Y514

NOTE\*  
1. PDG 5.2% UNTIL REACHING 5000FT  
2. CROSS RDL190 VKB VOR AT 5000FT OR ABOVE

RATE OF CLIMB (FT)							
GROUND SPEED (KT)		120	150	180	210	240	270
GRADIENT	3.3%	401	501	601	701	802	902
	5.2%	672	790	948	1106	1264	1421

**COMMUNICATION FAILURE :**

- SQUAWK 7600
- IF UNDER PILOT NAVIGATION, MAINTAIN LAST ASSIGNED LEVEL FOR 3 MINUTE, IF NO ONWARD CLEARANCE IS RECEIVED, SUBSEQUENTLY CLIMB TO COMPLY WITH SID.
- IF UNDER RADAR VECTORED, MAINTAIN VECTOR FOR 2 MINUTES
- IF BELOW MSA, CLIMB TO MSA, THEN TRACK TO INTERCEPT CLEARED OR PREVIOUSLY ASSIGNED SID TO DESTINATION.

CHANGES : REMOVE OBSTACLE 416 (400).