

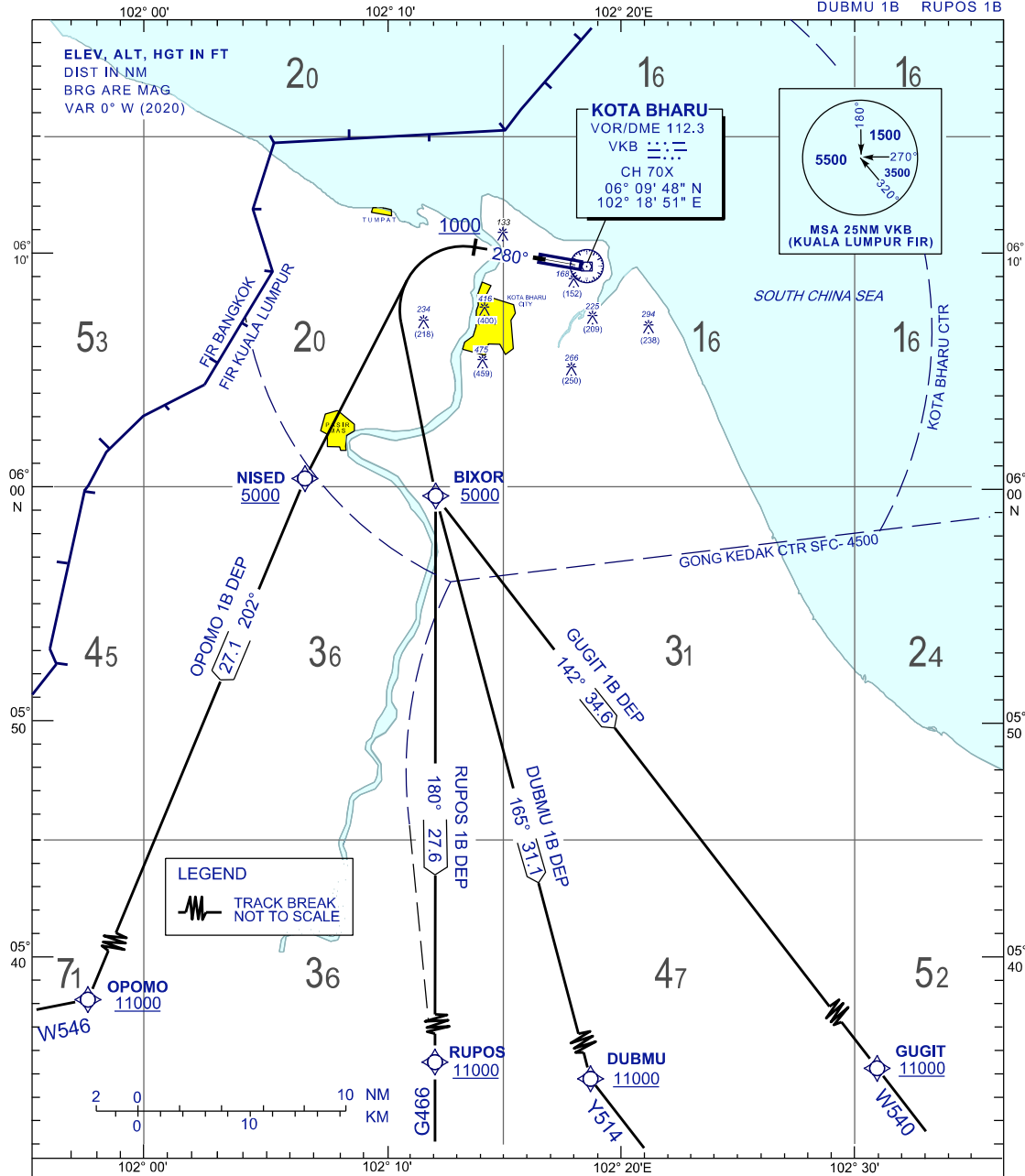
STANDARD DEPARTURE CHART  
INSTRUMENT (SID) - ICAO

KOTA BHARU/  
SULTAN ISMAIL PETRA (WMKC)  
RNAV (GNSS) RWY 28

TRANSITION ALTITUDE  
11 000 FT

APP 120.85,130.3  
TWR 122.5  
SMC 121.6  
ATIS 128.85

OPOMO 1B GUGIT 1B  
DUBMU 1B RUPOS 1B



RATE OF CLIMB (FT)							
GND SPEED - KT	120	150	180	210	240	270	
GRADIENT	5.2%	632	790	948	1106	1264	1422
	3.3%	401	501	602	702	802	902
	3.6%	437	547	656	766	875	984

COMMUNICATION FAILURE :

- SQUAWK 7600
- IF UNDER PILOT NAVIGATION, MAINTAIN LAST ASSIGNED LEVEL FOR 3 MINUTE, IF NO ONWARD CLEARANCE IS RECEIVED, SUBSEQUENTLY CLIMB TO COMPLY WITH SID.
- IF UNDER RADAR VECTORED, MAINTAIN VECTOR FOR 2 MINUTES
- IF BELOW MSA, CLIMB TO MSA, THEN TRACK TO INTERCEPT CLEARED OR PREVIOUSLY ASSIGNED SID TO DESTINATION.

CHANGES: REMOVE OBSTACLE 416 (400).