

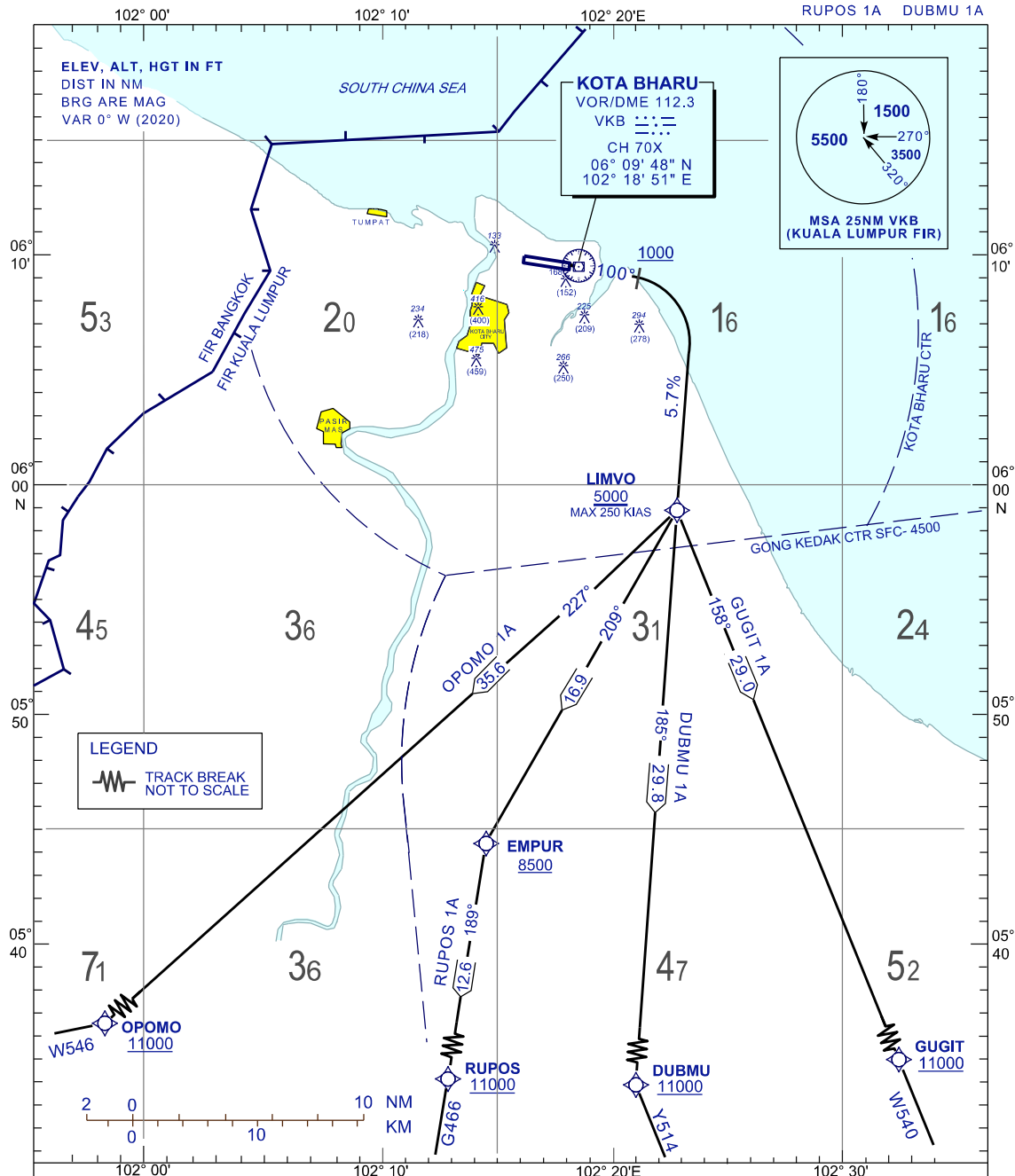
**STANDARD DEPARTURE CHART
INSTRUMENT (SID) - ICAO**

**KOTA BHARU/
SULTAN ISMAIL PETRA (WMKC)
RNAV (GNSS) RWY 10**

TRANSITION ALTITUDE
11 000 FT

APP 120.85,130.3
TWR 122.5
SMC 121.6
ATIS 128.85

GUGIT 1A OPOMO 1A
RUPOS 1A DUBMU 1A



RATE OF CLIMB(FT)		120	150	180	210	240	270
GND SPEED - KT	3.3%	401	501	602	702	802	902
GRADIENT	5.7%	692	866	1039	1212	1385	1558

COMMUNICATION FAILURE :

- SQUAWK 7600
- IF UNDER PILOT NAVIGATION, MAINTAIN LAST ASSIGNED LEVEL FOR 3 MINUTE, IF NO ONWARD CLEARANCE IS RECEIVED, SUBSEQUENTLY CLIMB TO COMPLY WITH SID.
- IF UNDER RADAR VECTORING, MAINTAIN VECTOR FOR 2 MINUTES
- IF BELOW MSA, CLIMB TO MSA, THEN TRACK TO INTERCEPT CLEARED OR PREVIOUSLY ASSIGNED SID TO DESTINATION.

CHANGES: REMOVE OBSTACLE 416 (400).