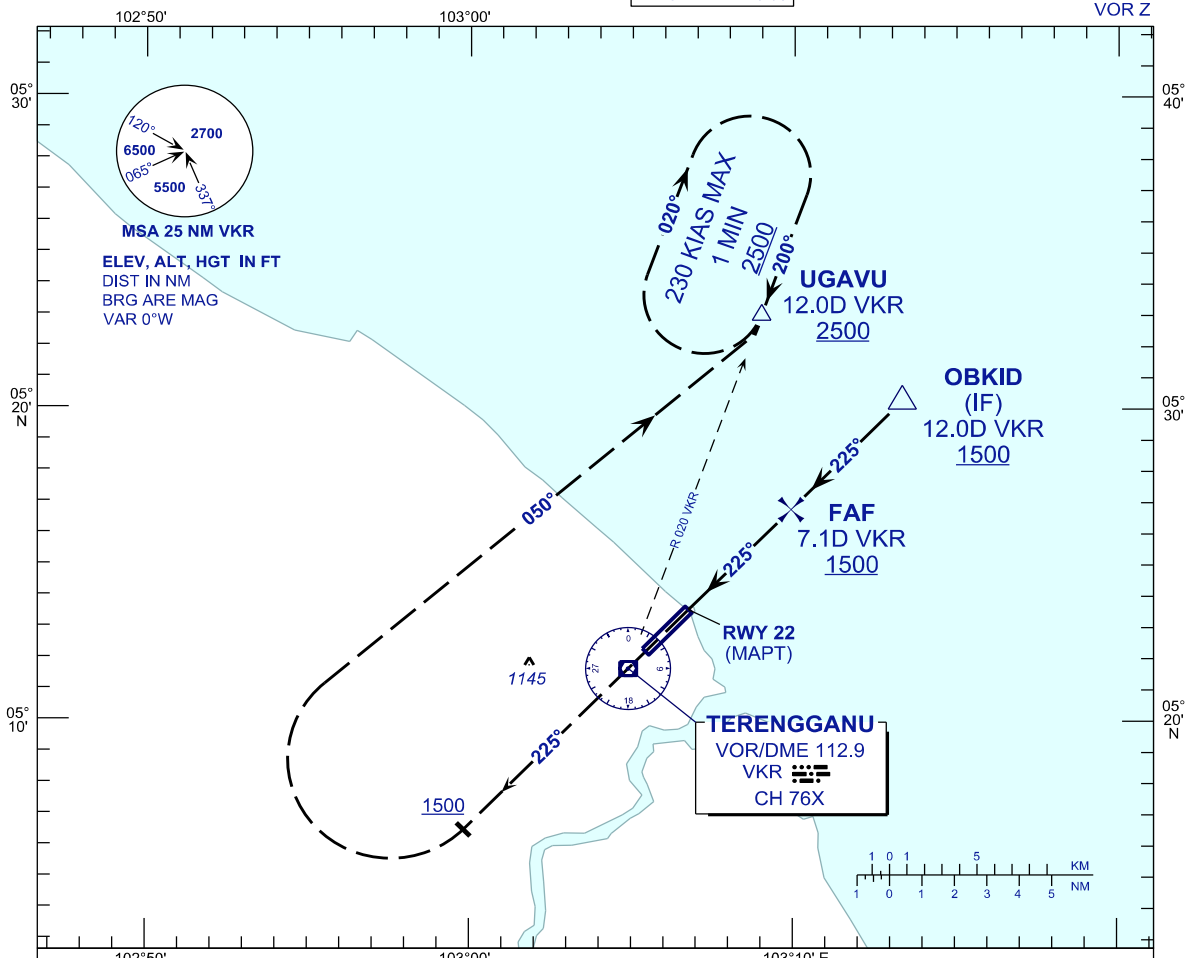


**INSTRUMENT  
APPROACH  
CHART - ICAO**

AERODROME ELEV 20 FT  
HEIGHT RELATED TO  
THR RWY 22 - ELEV 20 FT

APP	123.6
	235.32
	121.5
TWR	119.05
SMC	121.6
ATIS	126.65

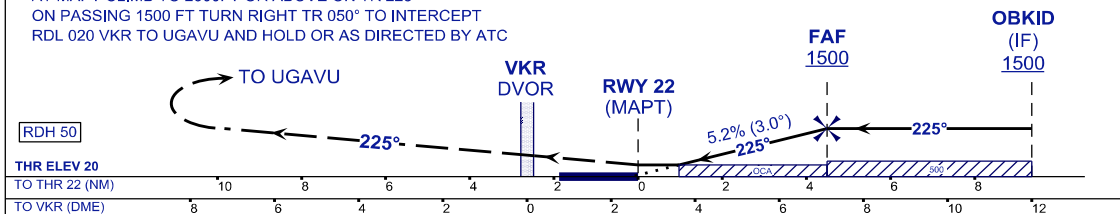
**KUALA TERENGGANU/  
SULTAN MAHMUD (WMKN)  
RWY 22**



**MISSED APPROACH**

AT MAPT CLIMB TO 2500FT OR ABOVE ON TR 225°  
ON PASSING 1500 FT TURN RIGHT TR 050° TO INTERCEPT  
RDL 020 VKR TO UGAVU AND HOLD OR AS DIRECTED BY ATC

TRANSITION LEVEL FL130  
TRANSITION ALT 11 000



OCA / OCH	A	B	C	D
VOR/DME	380/(360)			

DME VKR	NM	7.1	6.1	5.1	4.1	3.1
DIST THR/RWY22	NM	4.5	3.5	2.5	1.5	0.5
ALTITUDE	FT	1500	1185	867	548	230

GROUND SPEED (GS)	KT	80	100	120	140	160	180
FAF - RWY22 (4.5NM)	MIN:SEC	3:22	2:42	2:15	1:55	1:41	1:30
RATE OF DESCEND(318.5FT/NM)	FT/MIN	420	530	640	740	850	960

CHANGES : AMEND MISSED APPROACH INFO.