

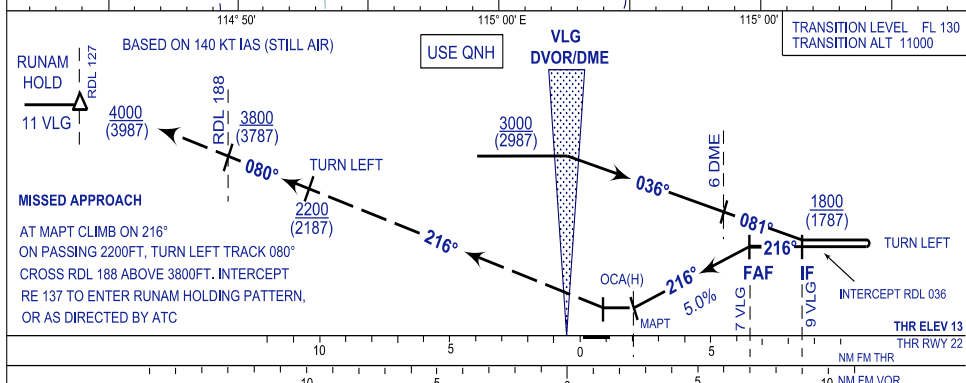
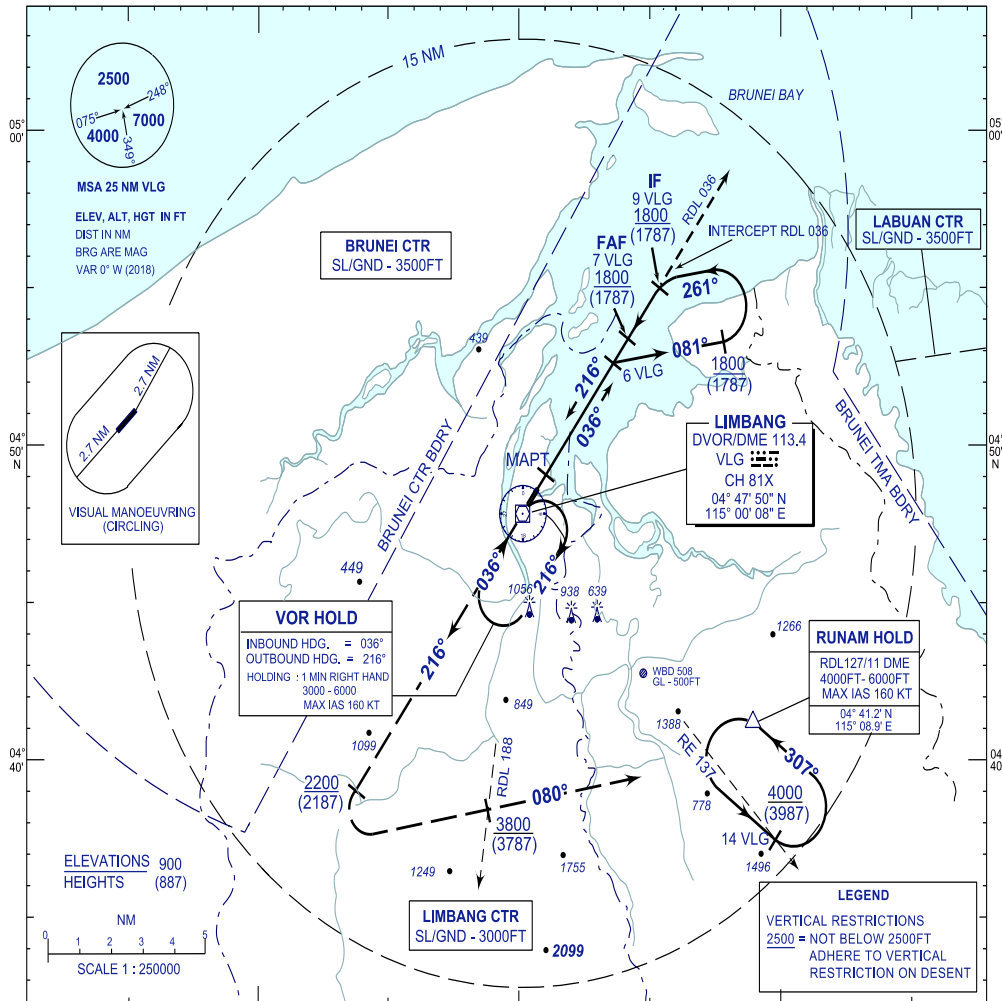
**INSTRUMENT  
APPROACH  
CHART - ICAO**

**AERODROME ELEV 16 FT**  
HEIGHTS RELATED TO  
THR RWY 22 - ELEV 13 FT

|       |              |
|-------|--------------|
| TWR   | 124.30 (PRY) |
|       | 118.50 (SRY) |
| SMC   | 121.95       |
| EMERG | 121.50       |

**LIMBANG/LIMBANG(WBGJ)  
RWY 22**

VOR/DME



| OCA(OCH)  |                      |                   |            |           |                   |   |
|---|----------------------|-------------------|------------|-----------|-------------------|---|
| CATEGORY OF AIRCRAFT                                    | A                    |                   |            | B         |                   |   |
|   | STRAIGHT-IN-APPROACH | 450 (437)/2.5 VLG |            |           | 450 (437)/2.5 VLG |   |
| CIRCLING (VISUAL MANOEUVRING)                           | 700 (687)            |                   |            | 700 (687) |                   |   |
| VISIBILITY (MIN/KM)NM                                   | 1.9 (1.0)            |                   |            | 2.8 (1.5) |                   |   |
| DISTANCE  | 7 DME                | 6 DME             | 5 DME      | 4 DME     | 3 DME             | - |
| ALTITUDE (HEIGHTS)                                      | 1800(1787)           | 1480(1467)        | 1160(1147) | 840(827)  | 520(507)          | - |
| TIME TO THR RWY 22 FROM FAF DISTANCE 5.7 NAUTICAL MILES |                      |                   |            |           |                   |   |
| GROUND SPEED  | 70                   | 90                | 120        | 150       | -                 | - |
| MIN : SEC   | 4:53                 | 3:48              | 2:51       | 2:17      | -                 | - |
| 5.0% DESC. (FT / MIN)                                   | 359                  | 460               | 614        | 767       | -                 | - |

CHANGES : ADD TWR SECONDARY FREQUENCY