

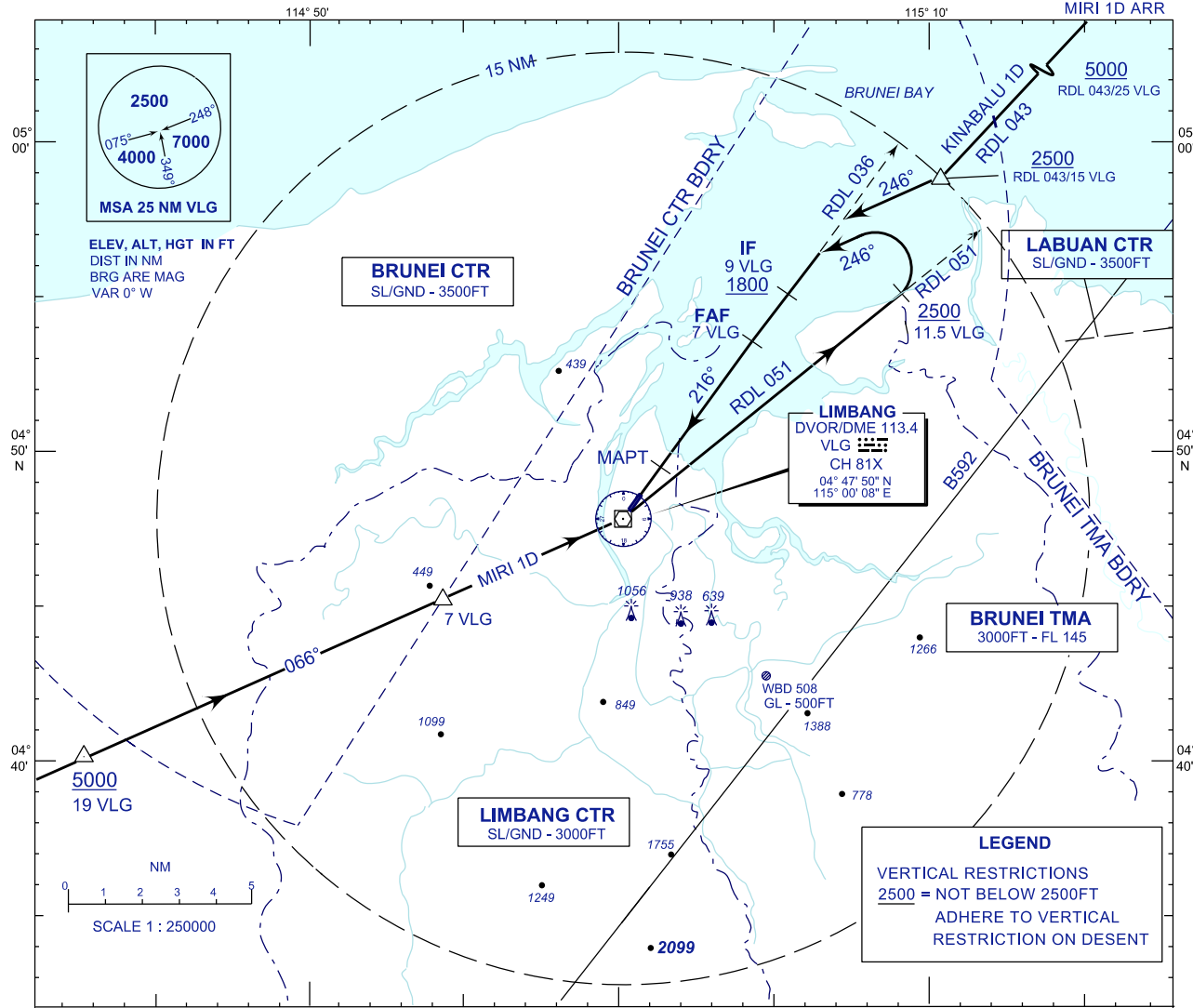
**STANDARD ARRIVAL CHART
INSTRUMENT (STAR) - ICAO**

TRANSITION ALTITUDE
11000 FT

TWR 124.30 (PRY)
118.50 (SRY)
SMC 121.95
EMERG 121.50

**LIMBANG/LIMBANG(WBGJ)
RWY 22**

VOR/DME
KINABALU 1D ARR
MIRI 1D ARR



RWY 22

KINABALU ONE DELTA ARRIVAL

- FROM RDL 043/15 DME VLG VOR INBOUND
- * TRACK 246°
 - * TO INTERCEPT RDL 036 FOR VOR/DME APPROACH

MIRI ONE DELTA ARRIVAL

- FROM RDL 246/19 DME VLG VOR INBOUND
- * TRACK 066° TO VLG VOR, THEN TRACK ON RDL 051
 - * AT 11.5 DME, TURN LEFT TRACK 246°
 - * TO INTERCEPT RDL 036 FOR VOR/DME APPROACH

CHANGES : ADD TWR SECONDARY FREQUENCY