

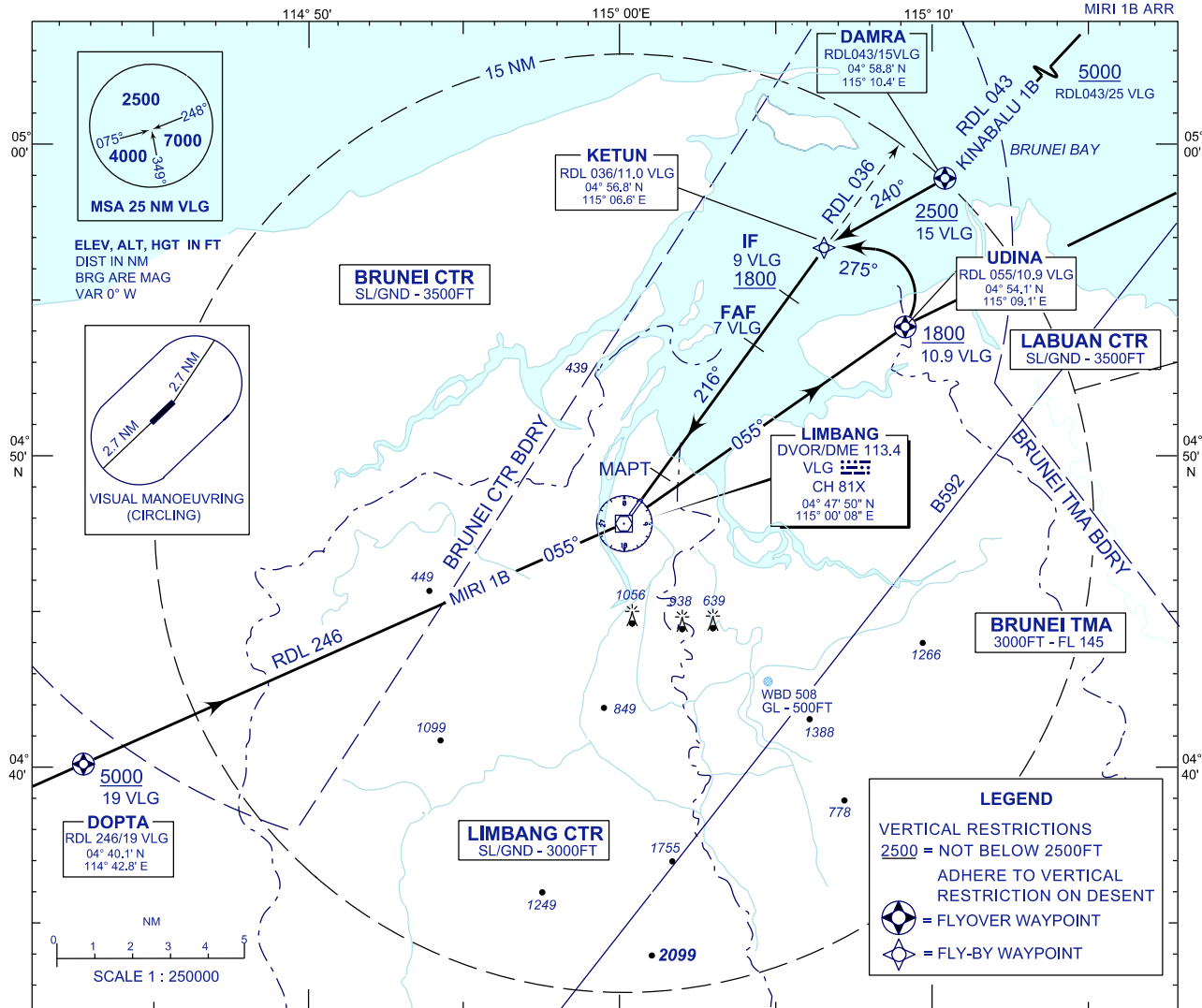
**STANDARD ARRIVAL CHART  
INSTRUMENT (STAR) - ICAO**

TRANSITION ALTITUDE  
11000FT

TWR 124.30 (PRY)  
118.50 (SRY)  
SMC 121.95  
EMERG 121.50

**LIMBANG/LIMBANG(WBGJ)  
RWY 22**

RNAV TRACKING  
KINABALU 1B ARR  
MIRI 1B ARR



**RWY 22**

**KINABALU ONE BRAVO ARRIVAL**

FROM DAMRA RDL 043/15 DME VLG VOR INBOUND  
\* TRACK 240° TO KETUN  
\* TO INTERCEPT RDL 036 FOR VOR/DME APPROACH

**MIRI ONE BRAVO ARRIVAL**

FROM DOPTA RDL 246/19 DME VLG VOR INBOUND  
\* TRACK 066° TO VLG, THENCE TRACK 055° TO UNIDA  
\* AT UNIDA TURN LEFT TRACK 275° TO KETUN  
\* To INTERCEPT RDL 036 FOR VOR/DME APPROACH

CHANGES : ADD TWR SECONDARY FREQUENCY