

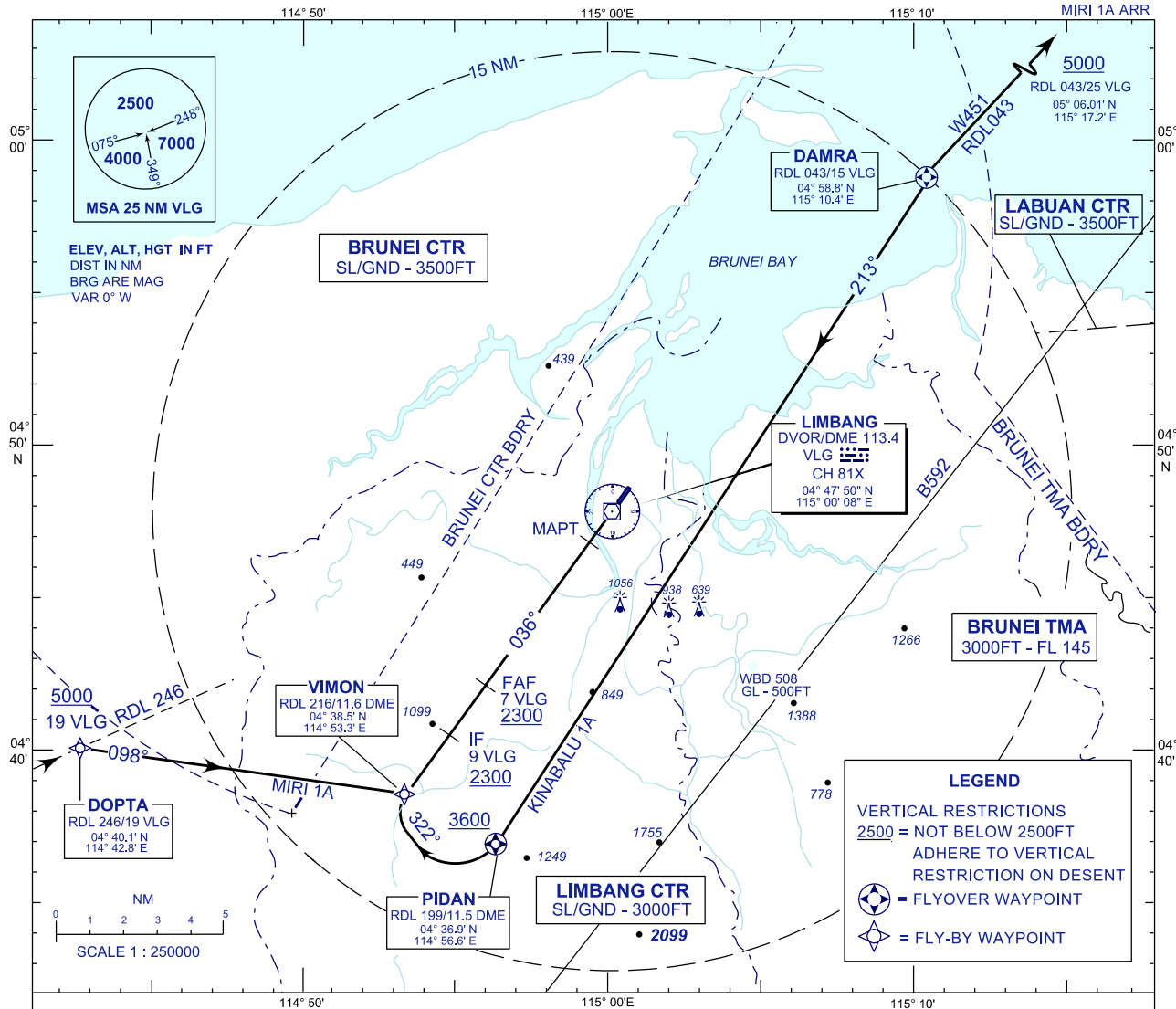
**STANDARD ARRIVAL CHART  
INSTRUMENT (STAR) - ICAO**

TRANSITION ALTITUDE  
11000FT

TWR	124.30 (PRY)
SMC	121.95
EMERG	121.50

**LIMBANG/LIMBANG(WBGJ)  
RWY 04  
RNAV TRACKING**

KINABALU 1A ARR  
MIRI 1A ARR



**RWY 04**

**KINABALU ONE ALPHA ARRIVAL**

- FROM DAMRA RDL 043/15 DME VLG VOR INBOUND
- \* TRACK 213° TO PIDAN
  - \* AT PIDAN TURN RIGHT TRACK 322° TO VIMON
  - \* TO INTERCEPT RDL 216 FOR VOR/DME APPROACH

**MIRI ONE ALPHA ARRIVAL**

- FROM DOPTA RDL 246/19 DME VLG VOR INBOUND
- \* TRACK 098° TO VIMON,
  - \* To INTERCEPT RDL 216 FOR VOR/DME APPROACH

CHANGES : ADD TWR SECONDARY FREQUENCY