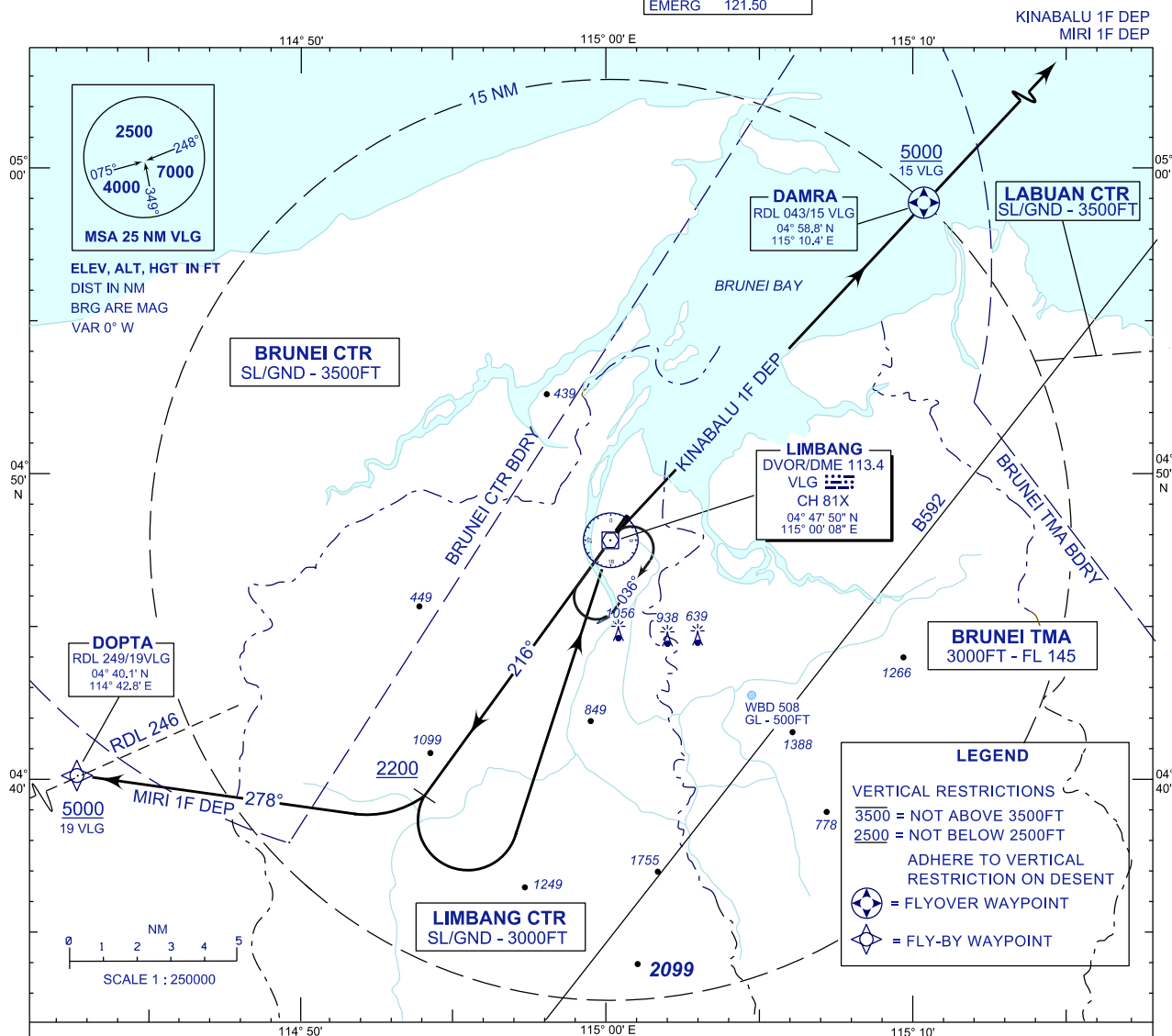


**STANDARD DEPARTURE CHART
INSTRUMENT (SID) - ICAO**

TRANSITION ALTITUDE
11000FT

TWR 124.30 (PRY)
SMC 121.95
EMERG 121.50

**LIMBANG/LIMBANG(WBGJ)
RWY 22**



RWY 04

- * CLIMB ON TRACK 216°
- * AT 2200 FT OR ABOVE

FOR KINABALU 1F DEPARTURE

- * TURN LEFT, TRACK TO VLG VOR
- * THENCE TRACK ON RDL 043 TO DAMRA RDL 043/15 DME VLG VOR OUTBOUND

FOR MIRI 1F DEPARTURE

- * TURN RIGHT, TRACK 278° TO DOPTA RDL 246/19 DME VLG VOR OUTBOUND

CHANGES : ADD TWR SECONDARY FREQUENCY