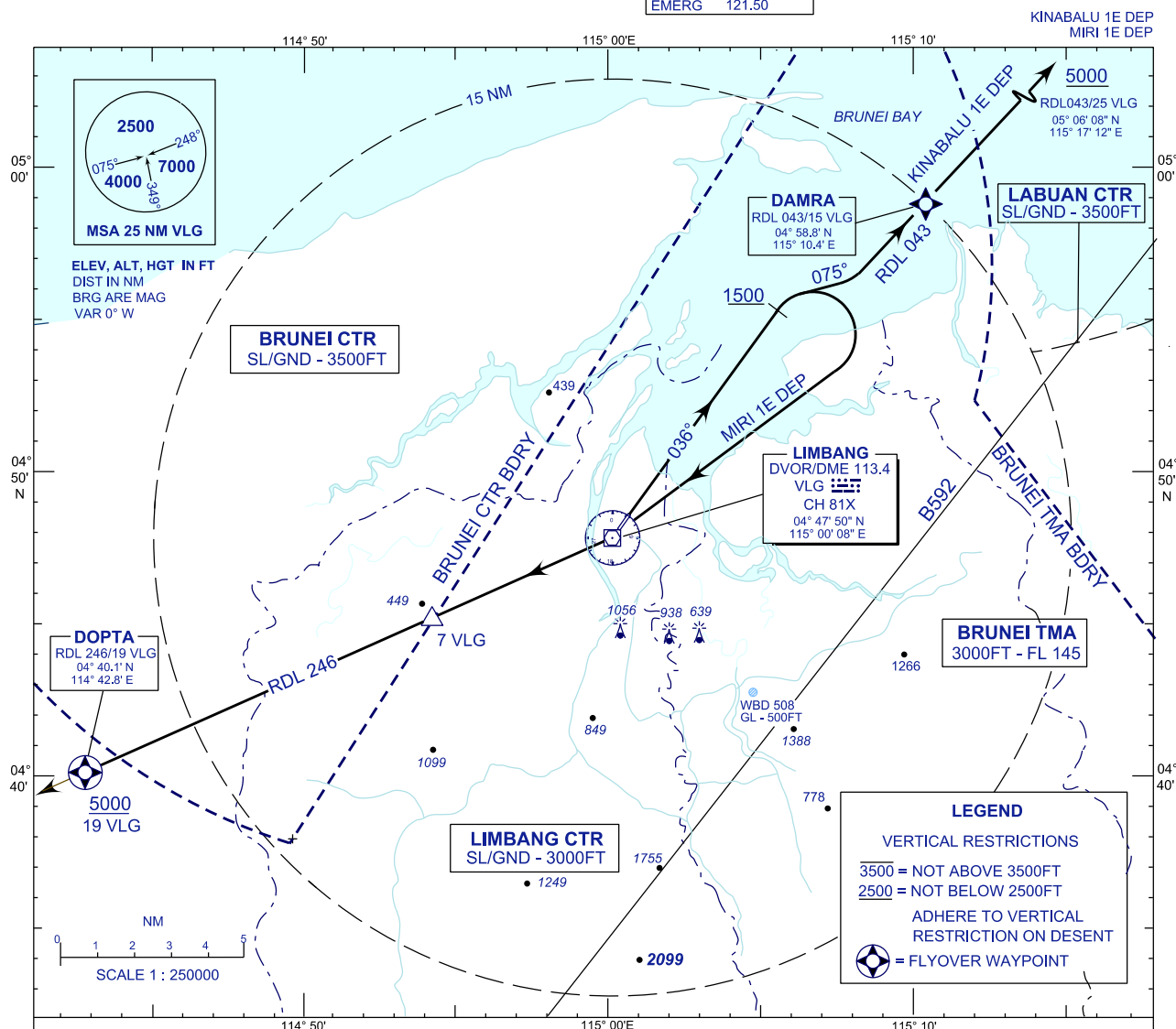


**STANDARD DEPARTURE CHART  
INSTRUMENT (SID) - ICAO**

TRANSITION ALTITUDE  
11000FT

TWR	124.30 (PRY)
SMC	121.95
EMERG	121.50

**LIMBANG/LIMBANG(WBGJ)  
RWY 04**



**RWY 04**

- \* CLIMB ON TRACK 036°
- \* AT 1500FT OR ABOVE, TURN RIGHT.

**FOR KINABALU 1E DEPARTURE**

- \* TRACK 075° TO INTERCEPT RDL 043 TO DAMRA  
RDL 043/15 DME VLG VOR OUTBOUND.

**FOR MIRI 1E DEPARTURE**

- \* TRACK TO VLG VOR, THENCE ON RDL 246 TO DOPTA  
RDL 246/19 DME VLG VOR OUTBOUND.

CHANGES : ADD TWR SECONDARY FREQUENCY