

**AERODROME/HELIPORT
CHART - ICAO**

06° 10' 04" N
102° 17' 27" E

ELEV 5 M

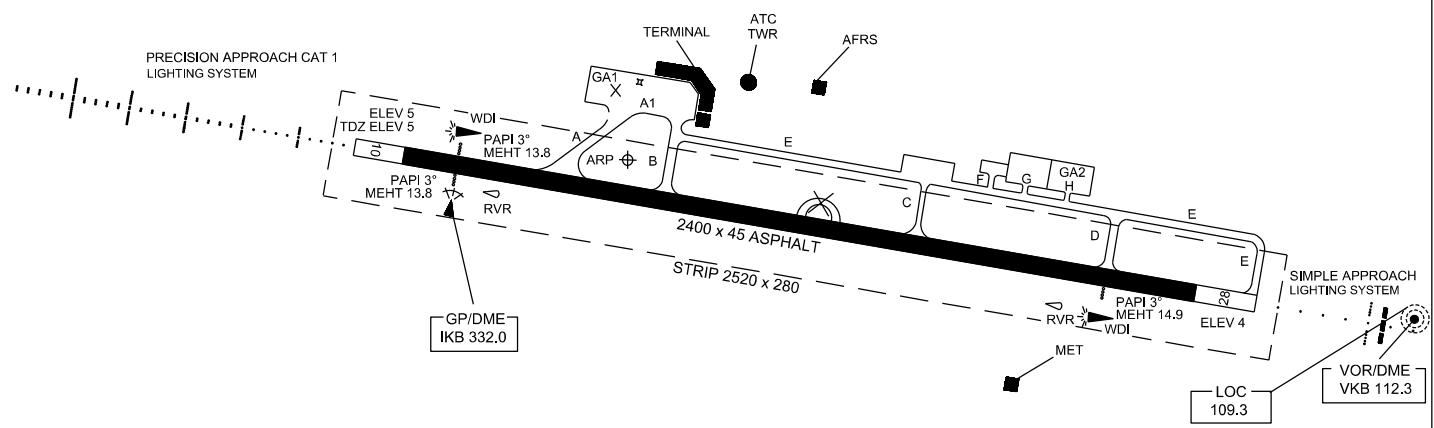
| | |
|------|-------------------------|
| TWR | 122.5 |
| SMC | 121.6 |
| ATIS | 120.85 (P) 130.3 (S) |
| ATIS | 128.85 |

**KOTA BHARU/SULTAN
ISMAIL PETRA AIRPORT**

| RWY | DIRECTION | THR | BEARING STRENGTH |
|-----|-----------|---------------------------------------|---------------------------------------|
| 10 | 099° | 06° 10' 05.71" N 102° 17' 05.52" E | PCR 520/F/D/X/U ASPHALT (FLEXIBLE) |
| 28 | 279° | 06° 09' 52.61" N 102° 18' 22.48" E | |



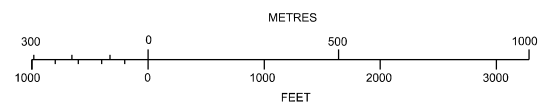
ANNUAL RATE OF CHANGE 1' 48" W
ELEVATIONS AND DIMENSIONS METRES
BEARINGS ARE MAGNETIC



- TAXIWAY A 25 M WIDE
- TAXIWAY B 26 M WIDE
- TAXIWAY C 9 M WIDE
- TAXIWAY D 17 M WIDE
- TAXIWAY E 18 M WIDE
- TAXIWAY F 14 M WIDE
- TAXIWAY G 21 M WIDE
- TAXIWAY H 13 M WIDE
- APRON TAXIWAY A1 22 M WIDE

- BEARING STRENGTH APRON TAXIWAY A1 PCN 115/R/A/W/T
- TAXIWAY EDGE LIGHTS ON A, B, C, D AND E
- TAXIWAY CENTRE LINE LIGHTS ON A, B, D AND E AT CURVES AND EXIT TAXIWAY
- TAXIWAY C FOR LIGHT AIRCRAFT
- APRON TAXIWAY A1 FOR CODE C AIRCRAFT

- BEARING STRENGTH TAXIWAYS A, B, D AND E PCN 51/F/A/W/T
- BEARING STRENGTH TAXIWAY C PCN 12/F/D/Y/U
- BEARING STRENGTH GA2 PCN 21/R/B/Y/U



| LEGEND | |
|--------------------|---|
| CONCRETE STRUCTURE | ⊞ |
| CLOSED MARKING | ⊗ |

CHANGES : PAVEMENT BEARING STRENGTH RUNWAY
MAGNETIC BEARING