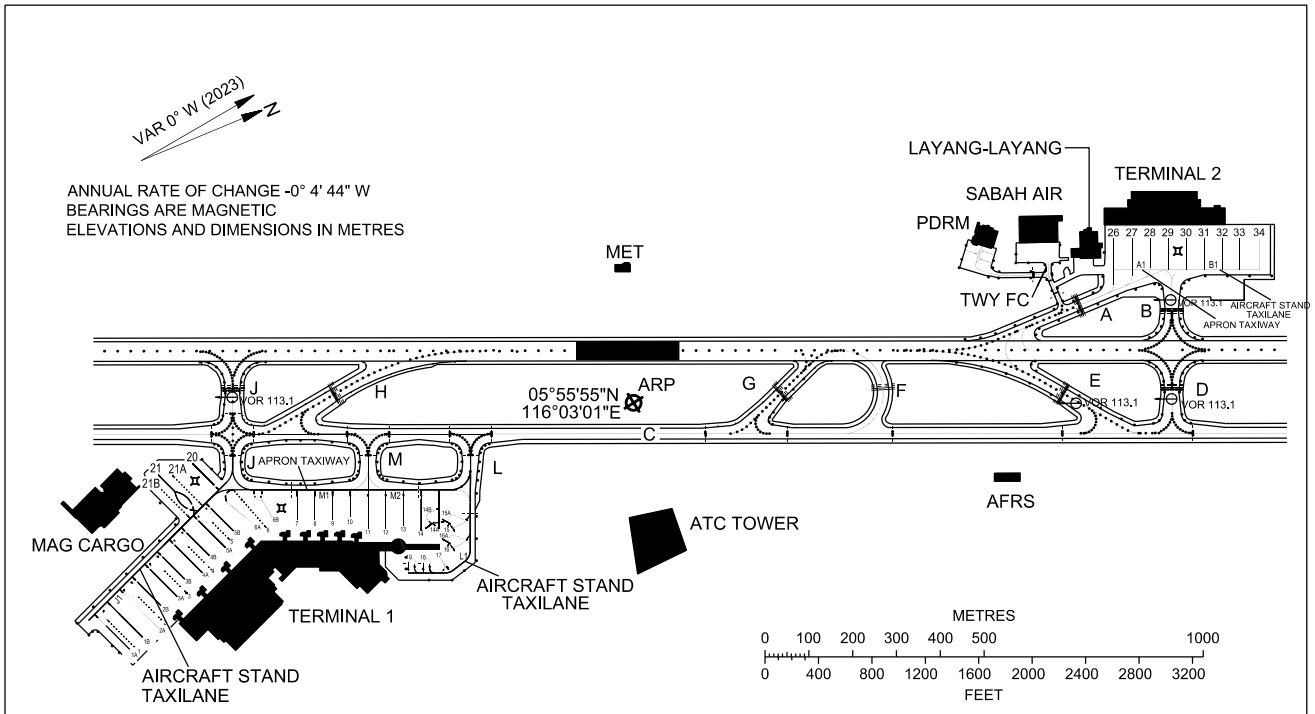


**AIRCRAFT PARKING/
DOCKING CHART - ICAO**

APRON ELEV
3 M

TWR 118.3
SMC 121.6
ATIS 127.4

**KOTA KINABALU/KOTA KINABALU
INTERNATIONAL AIRPORT**



- BEARING STRENGTH FOR TWY A PCR 400/F/B/W/U
- BEARING STRENGTH FOR TWY B PCR 373/F/A/W/U
- BEARING STRENGTH FOR TWY C, D, M AND N PCR 410/F/B/W/U
- BEARING STRENGTH FOR TWY E PCR 407/F/B/W/U
- BEARING STRENGTH FOR TWY F, G, H, K AND L PCR 384/F/A/W/U
- BEARING STRENGTH FOR TWY J PCR 658/F/B/W/U
- BEARING STRENGTH FOR TWY FC PCR 33/F/C/Y/U
- BEARING STRENGTH APRON TAXIWAY A1 AND M1 PCR 410/F/B/W/U AND PCR 524/R/B/W/U
- BEARING STRENGTH APRON TAXIWAY M2 PCR 410/F/B/W/U
- BEARING STRENGTH AIRCRAFT STAND TAXILANE B1 PCR 410/F/B/W/U AND PCR 524/R/B/W/U
- BEARING STRENGTH AIRCRAFT STAND TAXILANE J1 PCR 597/F/B/W/U AND PCR 715/R/B/W/U
- BEARING STRENGTH AIRCRAFT STAND TAXILANE L1 PCR 410/F/B/W/U AND PCR 524/R/B/W/U

AIRCRAFT STANDS 2 TO 8 FMT APIS +++ EQUIPPED

- TAXIWAYS A, F AND G 23M WIDE
- TAXIWAYS B 31M WIDE
- TAXIWAYS C AND E 26M WIDE
- TAXIWAYS D AND J 30M WIDE
- TAXIWAYS H, K AND N 27M WIDE
- TAXIWAYS L AND M 40M WIDE
- TAXIWAYS FC 11M WIDE
- APRON TAXIWAY (A1,M1,M2) 23M WIDE
- AIRCRAFT STAND TAXILANE (B1) 15M WIDE
- AIRCRAFT STAND TAXILANE (J1,L1) 23M WIDE

LEGEND	
CONCRETE STRUCTURE	■
RUNWAY-HOLDING POSITION	▬▬▬
INTERMEDIATE HOLDING POSITION	----
TAXIWAY LIGHT	•
VOR CHECK POINT AND FREQUENCY	⊙ VOR 113.1

CHANGES : PAVEMENT BEARING STRENGTH