

**AERODROME/HELIPORT**  
**CHART - ICAO**

06° 20' 22" N  
99° 44' 01" E

ELEV 7 M

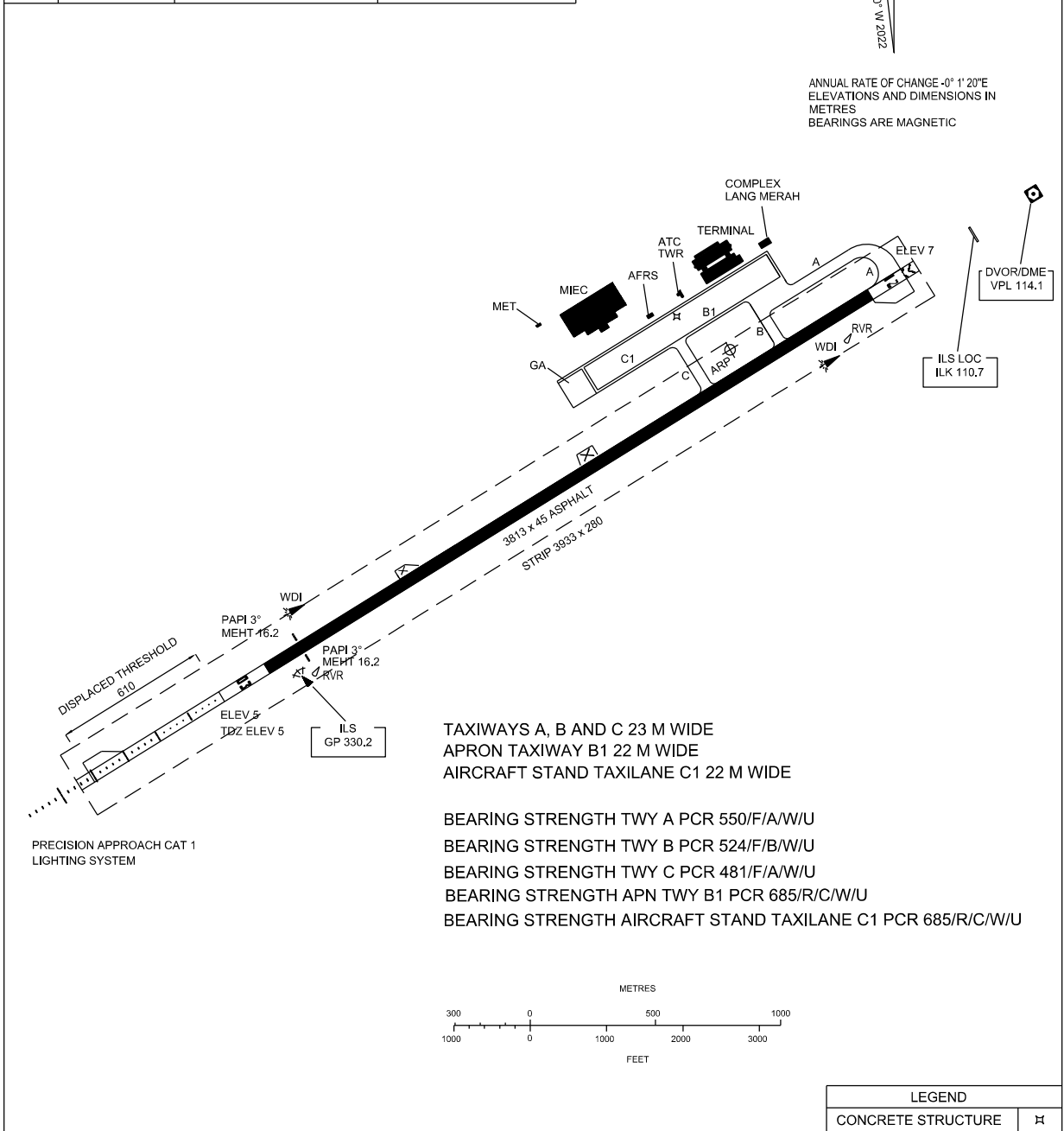
APP 119.4, 121.5  
TWR 118.5  
SMC 121.8  
ATIS 128.2

**LANGKAWI/LANGKAWI**  
**INTERNATIONAL AIRPORT**

RWY	DIRECTION	THR	BEARING STRENGTH
03	34°	06° 19' 12.41" N 99° 43' 19.27" E	PCR 550/F/A/W/U ASPHALT (FLEXIBLE)
21	214°	06° 20' 38.46" N 99° 44' 18.07" E	



ANNUAL RATE OF CHANGE -0° 1' 20"E  
ELEVATIONS AND DIMENSIONS IN METRES  
BEARINGS ARE MAGNETIC



CHANGES : PAVEMENT BEARING STRENGTH