

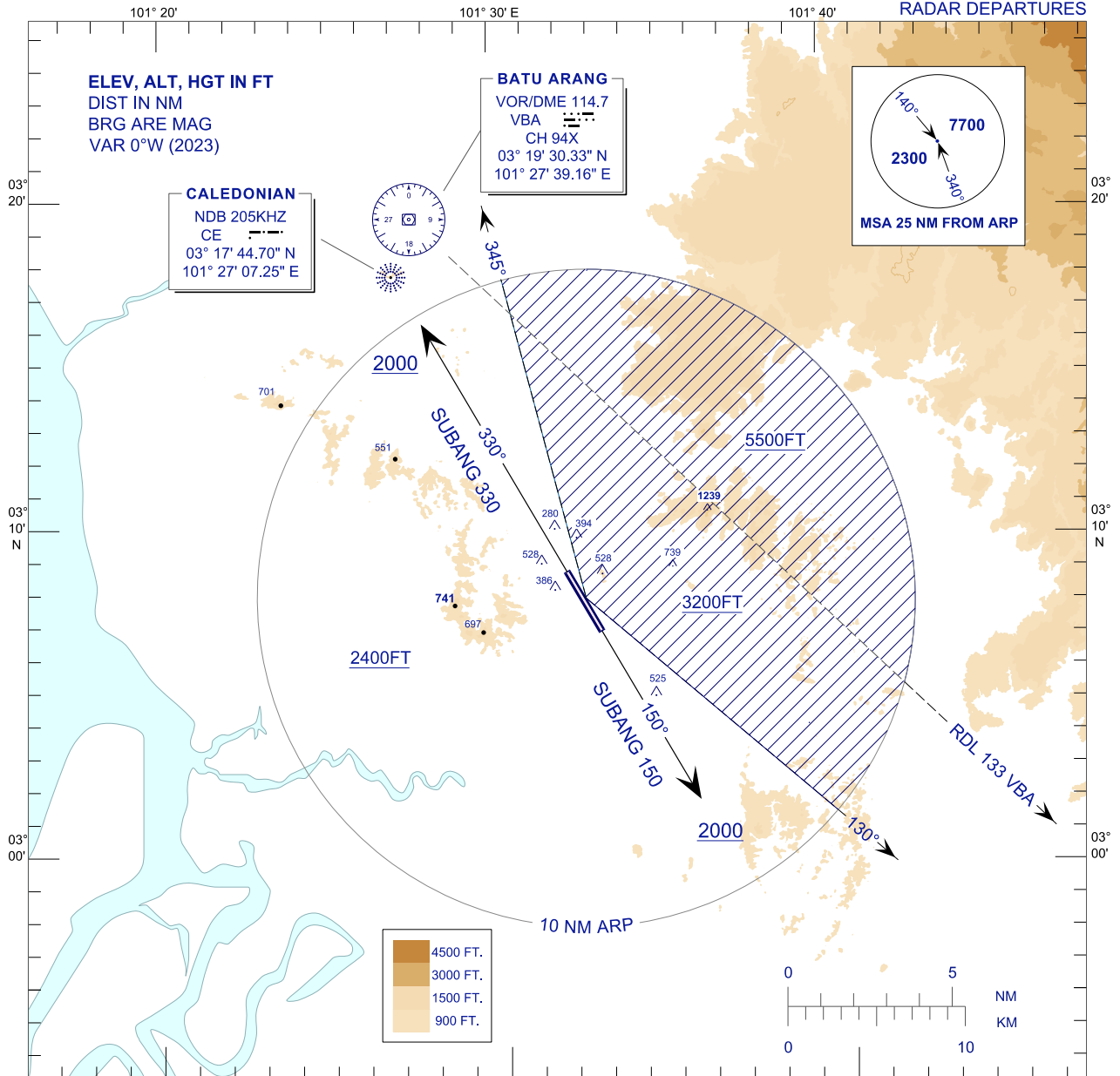
**STANDARD DEPARTURE CHART
INSTRUMENT (SID)**

TRANSITION ALTITUDE
11000FT

APP	118.65	ACD	120.45
	124.20	SMC	121.90
	135.25	TWR	118.20
FIS	126.10	ATIS	127.60

**SUBANG/SULTAN ABDUL
AZIZ SHAH (WMSA)**

RADAR DEPARTURES



RWY 15 - SUBANG 150

AFTER TAKE-OFF PROCEED ON TR 150° UNTIL PASSING 2000FT, THEN FOLLOW THE ASSIGNED HEADING.

NOTE:

1. MINIMUM CLIMB GRADIENT 5.5% UNTIL PASSING 2000 FT.
2. TURN BEFORE DER IS NOT ALLOWED.

RWY 33 - SUBANG 330

AFTER TAKE-OFF PROCEED ON TR 330° UNTIL PASSING 2000FT, THEN FOLLOW THE ASSIGNED HEADING.

NOTE:

1. TURN BEFORE DER IS NOT ALLOWED.

REMARKS :

1. ASSIGNED HEADING (AND LEVEL IF APPLICABLE) WILL BE ISSUED WITH TAKE-OFF CLEARANCE.
2. USE 5.5% CLIMB GRADIENT FROM LIFT-OFF UNTIL PASSING 5500FT IF ASSIGNED HEADING WILL TAKE AIRCRAFT INTO HATCHED SECTOR.

CHANGES : AMEND BATU ARANG COORDINATES