

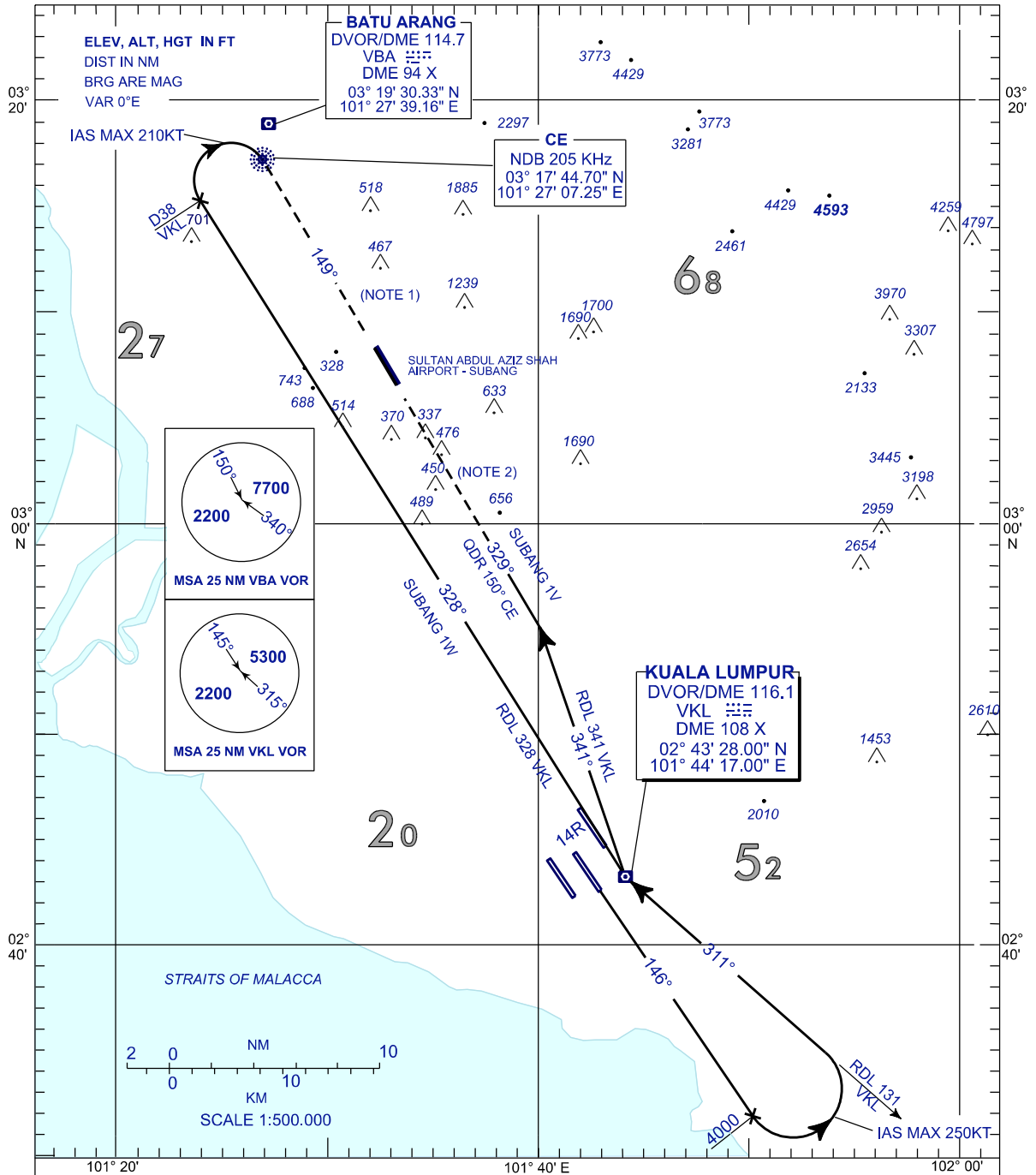
**STANDARD DEPARTURE CHART
INSTRUMENT (SID) - ICAO**

**SEPANG/KL INTERNATIONAL
AIRPORT (WMKK)
RWY 14R**

TRANSITION ALT
11000 FT

APP 135.250, 121.250
125.850
TWR 118.500
GND 121.800, 122.525
ATIS 126.450

DEPARTURES FOR SAAS SUBANG



REMARKS :

- NOTE 1 : EXPECT ILS OR LOC. APPROACH RWY15 OR RNP Y APPROACH RWY15
- NOTE 2 : EXPECT RNP Y APPROACH RWY33

- SUBANG 1W : AFTER TAKE - OFF PROCEED ON TR 146°, PASSING 4000FT TURN LEFT (IAS MAX 250KT) UNTIL JOINING RDL 131 VKL VOR (TR 311°) INBOUND VKL VOR, THEN PROCEED ON RDL 328 VKL VOR (TR 328°). AT 38 DME VKL TURN RIGHT (IAS MAX 210KT) TO CE NDB. EXPECT ILS OR LOC APPROACH RWY15 OR RNP Y APPROACH RWY15
- SUBANG 1V : AFTER TAKE - OFF PROCEED ON TR 146°, PASSING 4000FT TURN LEFT (IAS MAX 250KT) UNTIL JOINING RDL 131 VKL VOR (TR 311°) INBOUND VKL VOR, THEN PROCEED ON RDL 341 VKL VOR (TR 341°) UNTIL JOINING QDR 150 CE NDB. EXPECT RNP Y APPROACH RWY33.

CHANGES : AMEND COORDINATES FOR BATU ARANG, CE AND KUALA LUMPUR.