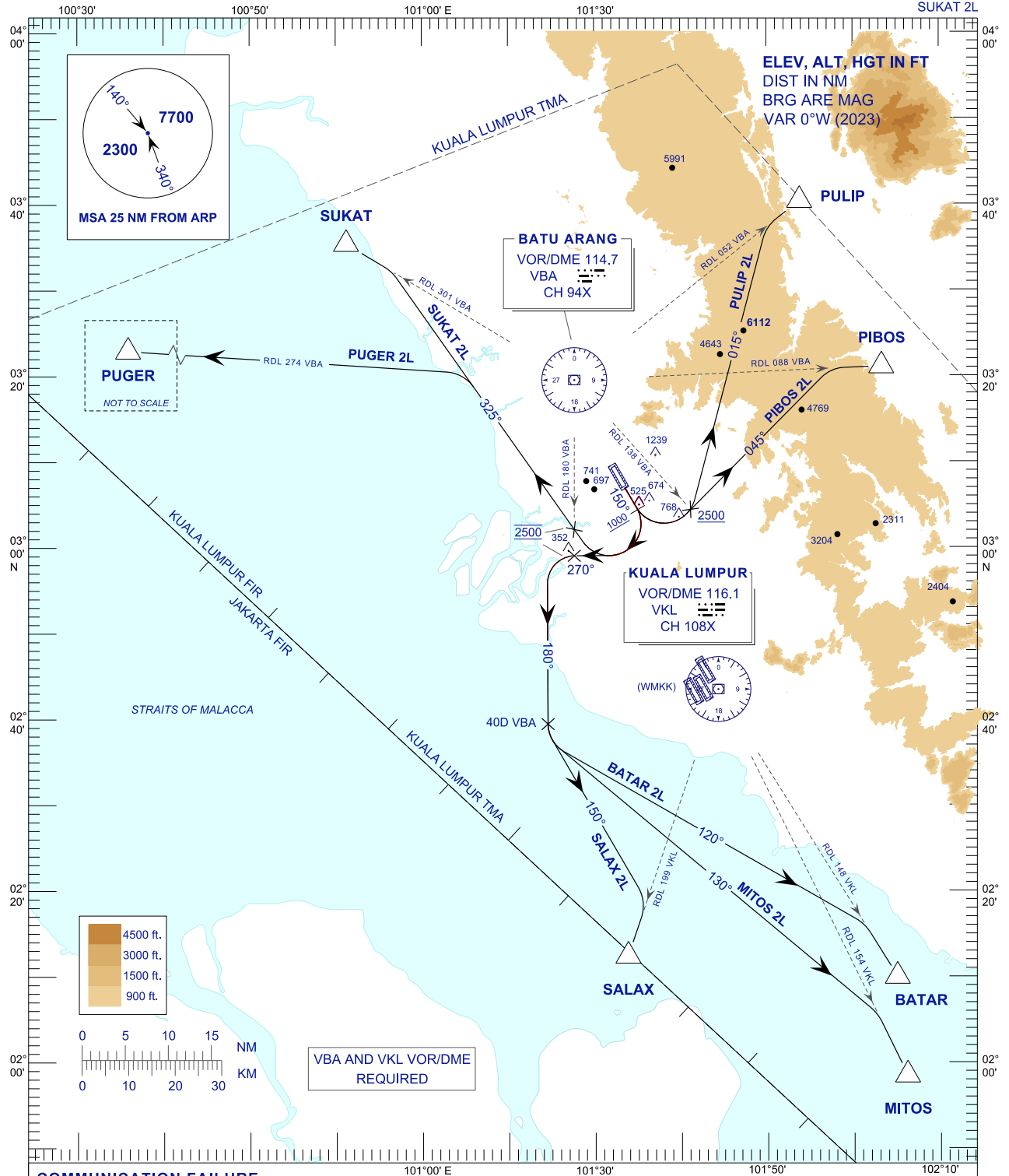


**STANDARD DEPARTURE CHART  
INSTRUMENT (SID) - ICAO**

TRANSITION ALTITUDE  
11000FT

APP	118.65	ACD	120.45
	124.20	SMC	121.90
	135.25	TWR	118.20
FIS	126.10	ATIS	127.60

**SUBANG/SULTAN ABDUL  
AZIZ SHAH (WMSA)  
RWY 15**  
PULIP 2L PIBOS 2L BATAR 2L  
MITOS 2L SALAX 2L PUGER 2L  
SUKAT 2L



NEW CHART