

**STANDARD DEPARTURE CHART
INSTRUMENT (SID) - ICAO**

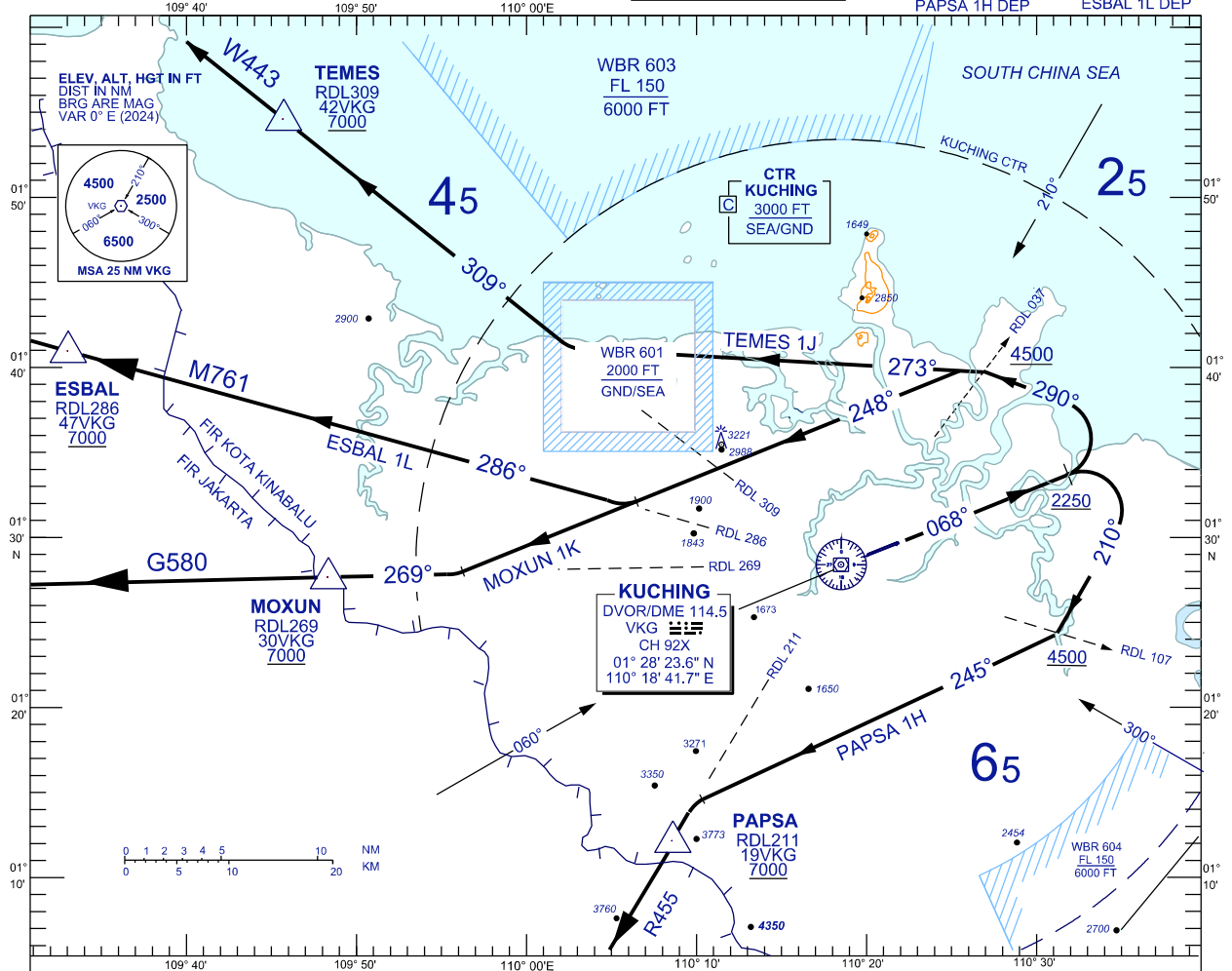
TRANSITION ALTITUDE
11,000 FT

TWR	118.1 (P)	SMC	121.9
	121.7 (S)	ATIS	128.4
APP	120.2 (P)	FIS	134.75
	123.85 (S)		
ACC	134.5 (P)		
	125.35 (S)		

**KUCHING/KUCHING (WBGG)
RWY 07**

MOXUN 1K DEP
PAPSA 1H DEP
TEMES 1J DEP
ESBAL 1L DEP

BANK ANGLE : 15° ACHEIVED



RWY 07 (RIGHT/ LEFT TURN)

CLIMB ON TRACK 068°. AT/ABOVE 2250 FEET,

TEMES ONE JULIET DEPARTURE

FOR TEMES

TRACK 290°. ON CROSSING RDL 037, TURN LEFT, TRACK 273° TO INTERCEPT RDL 309 TO TEMES

ESBAL ONE LIMA DEPARTURE

FOR ESBAL

TRACK 290°. ON CROSSING RDL 037, TURN LEFT TRACK 248° TO INTERCEPT RDL 286 TO ESBAL

MOXUN ONE KILO DEPARTURE

FOR MOXUN

TRACK 290°. ON CROSSING RDL 037, TURN LEFT TRACK 248° TO INTERCEPT RDL 269 TO MOXUN

PAPSA ONE HOTEL DEPARTURE

FOR PAPSA

TURN RIGHT, TRACK 210°. ON CROSSING RDL 107, TRACK 245° TO INTERCEPT RDL 211 TO PAPSA

VERTICAL RESTRICTIONS :

ADHERE TO VERTICAL RESTRICTIONS eg . 7000 = NOT BELOW 7000 FT ON CLIMB UNLESS SPECIFICALLY CANCELLED BY ATC

COMMUNICATION FAILURE :

- SQUAWK 7600
- IF UNDER PILOT NAVIGATION, MAINTAIN LAST ASSIGNED LEVEL FOR 3 MINUTES, IF NO ONWARD CLEARANCE IS RECEIVED, SUBSEQUENTLY CLIMB TO COMPLY WITH SID.
- IF UNDER RADAR VECTORING : MAINTAIN VECTOR FOR 2 MINUTES, IF BELOW MSA, CLIMB TO MSA, THEN TRACK TO INTERCEPT CLEARED OR PREVIOUSLY ASSIGNED SID TO DESTINATION

REPLACEMENT CHART