

**STANDARD DEPARTURE CHART
INSTRUMENT (SID) - ICAO**

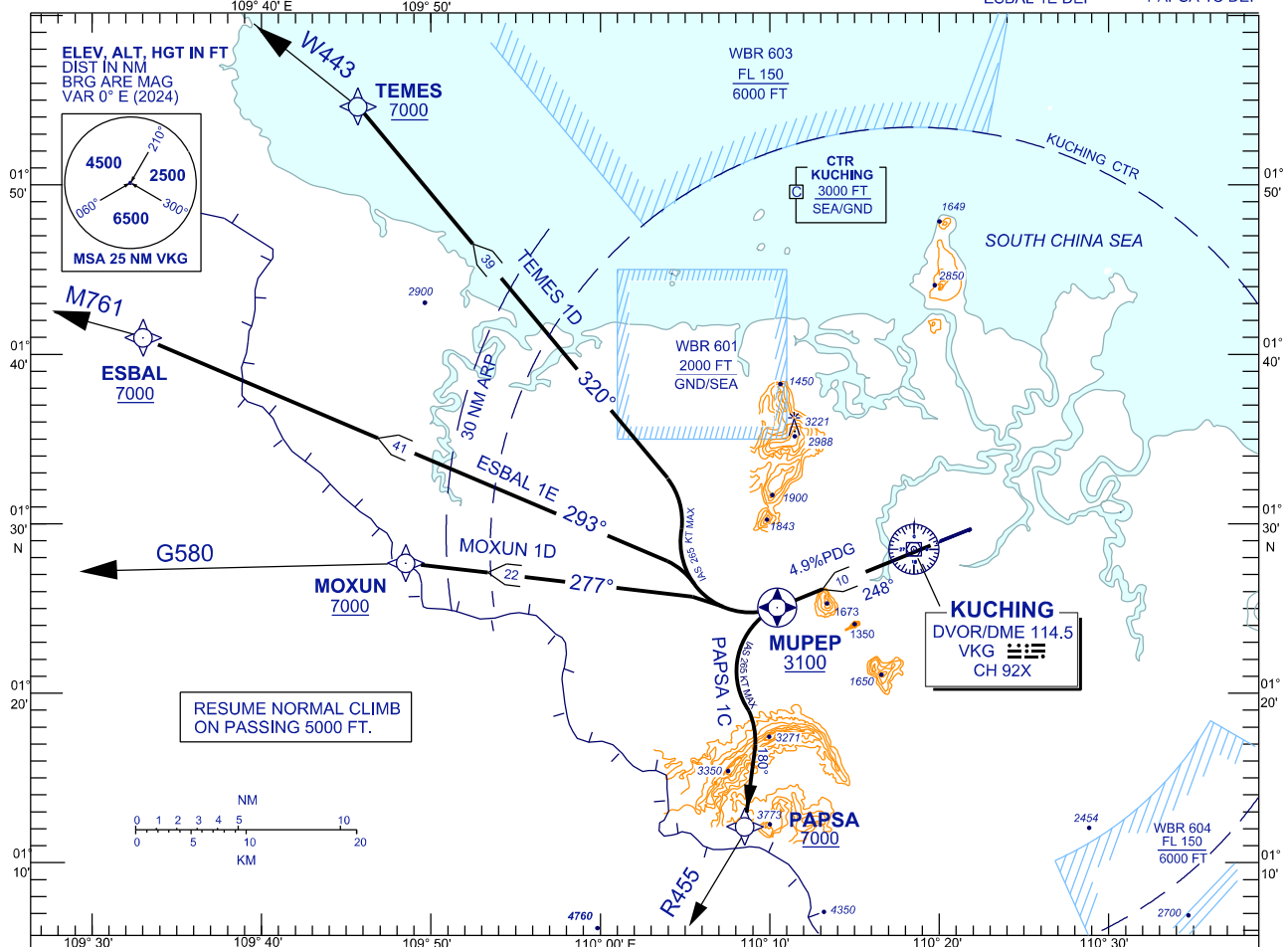
TRANSITION ALTITUDE
11,000 FT

TWR	118.1 (P)	SMC	121.9
	121.7 (S)	ATIS	128.4
APP	120.2 (P)	FIS	134.75
	123.85 (S)		
ACC	134.5 (P)		
	125.35 (S)		

**KUCHING/KUCHING (WBGG)
RWY 25 (RNAV)**

TEMES 1D DEP MOXUN 1D DEP
ESBAL 1E DEP PAPSA 1C DEP

BANK ANGLE : 15° ACHIEVED



RWY 25 (DEPARTURES WEST)

- CLIMB AT 4.9% PDG TO FLY OVER WPT MUPEP,
- AT/ABOVE 3100 FT,

TEMES ONE DELTA DEPARTURE

FOR TEMES ONE DELTA

FOR MOXUN ONE DELTA

ESBAL ONE ECHO DEPARTURE

TRACK TO TEMES / W443

TRACK TO MOXUN / G580

MOXUN ONE DELTA DEPARTURE

FOR ESBAL ONE ECHO

FOR PAPSA ONE CHARLIE

PAPSA ONE CHARLIE DEPARTURE

TRACK TO ESBAL / M761

TRACK TO PAPSA / R455

SPEED(IAS)	120KT	140KT	160KT	180KT	200KT	230KT	265KT
4.9% ROC (FT/MIN)	599	698	799	899	997	1147	1324

VERTICAL RESTRICTIONS :

ADHERE TO VERTICAL RESTRICTIONS eg . 7000 = NOT BELOW 7000 FT ON CLIMB UNLESS SPECIFICALLY CANCELLED BY ATC

COMMUNICATION FAILURE :

- SQUAWK 7600
- IF UNDER PILOT NAVIGATION, MAINTAIN LAST ASSIGNED LEVEL FOR 3 MINUTES, IF NO ONWARD CLEARANCE IS RECEIVED, SUBSEQUENTLY CLIMB TO COMPLY WITH SID.
- IF UNDER RADAR VECTORING : MAINTAIN VECTOR FOR 2 MINUTES, IF BELOW MSA, CLIMB TO MSA, THEN TRACK TO INTERCEPT CLEARED OR PREVIOUSLY ASSIGNED SID TO DESTINATION

REPLACEMENT CHART