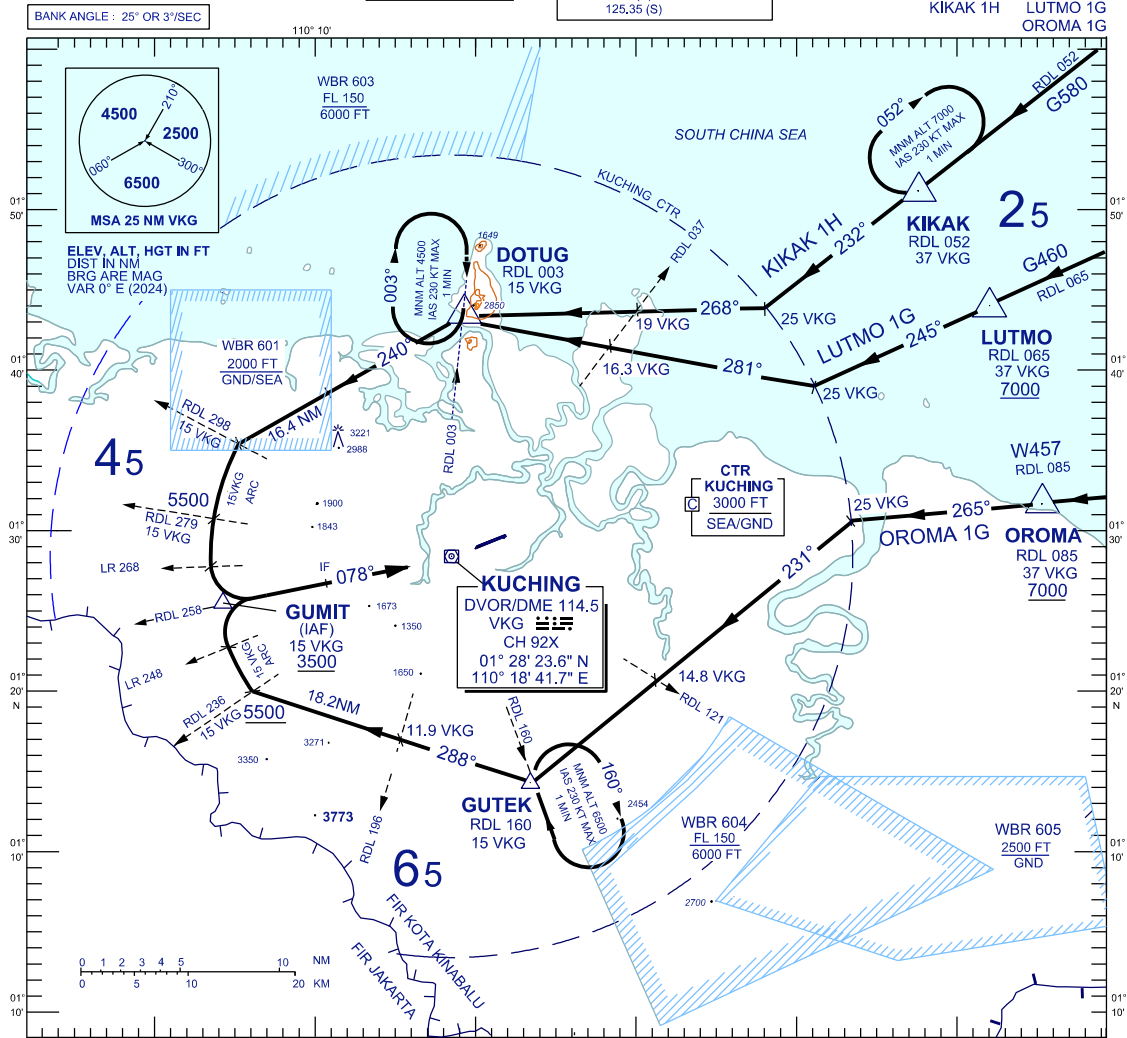


**STANDARD ARRIVAL CHART
INSTRUMENT (STAR) - ICAO**

TRANSITION ALTITUDE
11,000 FT

TWR	118.1 (P)	SMC	121.9
APP	120.2 (P)	ATIS	128.4
ACC	134.5 (P)	FIS	134.75
	123.85 (S)		
	125.35 (S)		

**KUCHING/KUCHING (WBGG)
RWY 07**



ARRIVALS

KIKAK ONE HOTEL :

- FROM KIKAK TRACK 232° TILL 25 DME VKG VOR INBOUND,
- THEN TRACK 268° TO DOTUG,
- FROM DOTUG TRACK 240°,
- ON CROSSING RDL 298, TRACK ON 15DME ARC VKG,
- ON CROSSING LR 268, TURN LEFT,
- INTERCEPT RDL 258 VKG FOR VOR Z APPROACH.

LUTMO ONE GOLF :

- FROM LUTMO TRACK 245° TILL 25 DME VKG VOR INBOUND,
- THEN TRACK 281° TO DOTUG,
- FROM DOTUG TRACK 240°,
- ON CROSSING RDL 298, TRACK ON 15DME ARC VKG,
- ON CROSSING LR 268, TURN LEFT,
- INTERCEPT RDL 258 VKG FOR VOR Z APPROACH.

OROMA ONE GOLF :

- FROM OROMA TRACK 265° TILL 25 DME VKG VOR INBOUND,
- THEN TRACK 231° TO GUTEK,
- FROM GUTEK TRACK 288°,
- ON CROSSING RDL 236, TRACK ON 15DME ARC VKG,
- ON CROSSING LR 248 TURN RIGHT,
- INTERCEPT RDL 258 VKG FOR VOR Z APPROACH.

VERTICAL RESTRICTIONS :

ADHERE TO VERTICAL RESTRICTIONS eg. 7000 = NOT BELOW 7000 FT ON DESCENT UNLESS SPECIFICALLY CANCELLED BY ATC.

COMMUNICATIONS FAILURE :

- * SQUAWK 7600
- * IF UNDER PILOT NAVIGATION, CONTINUE ON STAR AND LAND
- * IF UNDER RADAR VECTORED, MAINTAIN VECTOR FOR 1 MINUTE, IF BELOW MSA, CLIMB TO MSA, THEN TRACK TO INTERCEPT CLEARED OR PREVIOUSLY ASSIGNED STAR AND LAND

REPLACEMENT CHART