

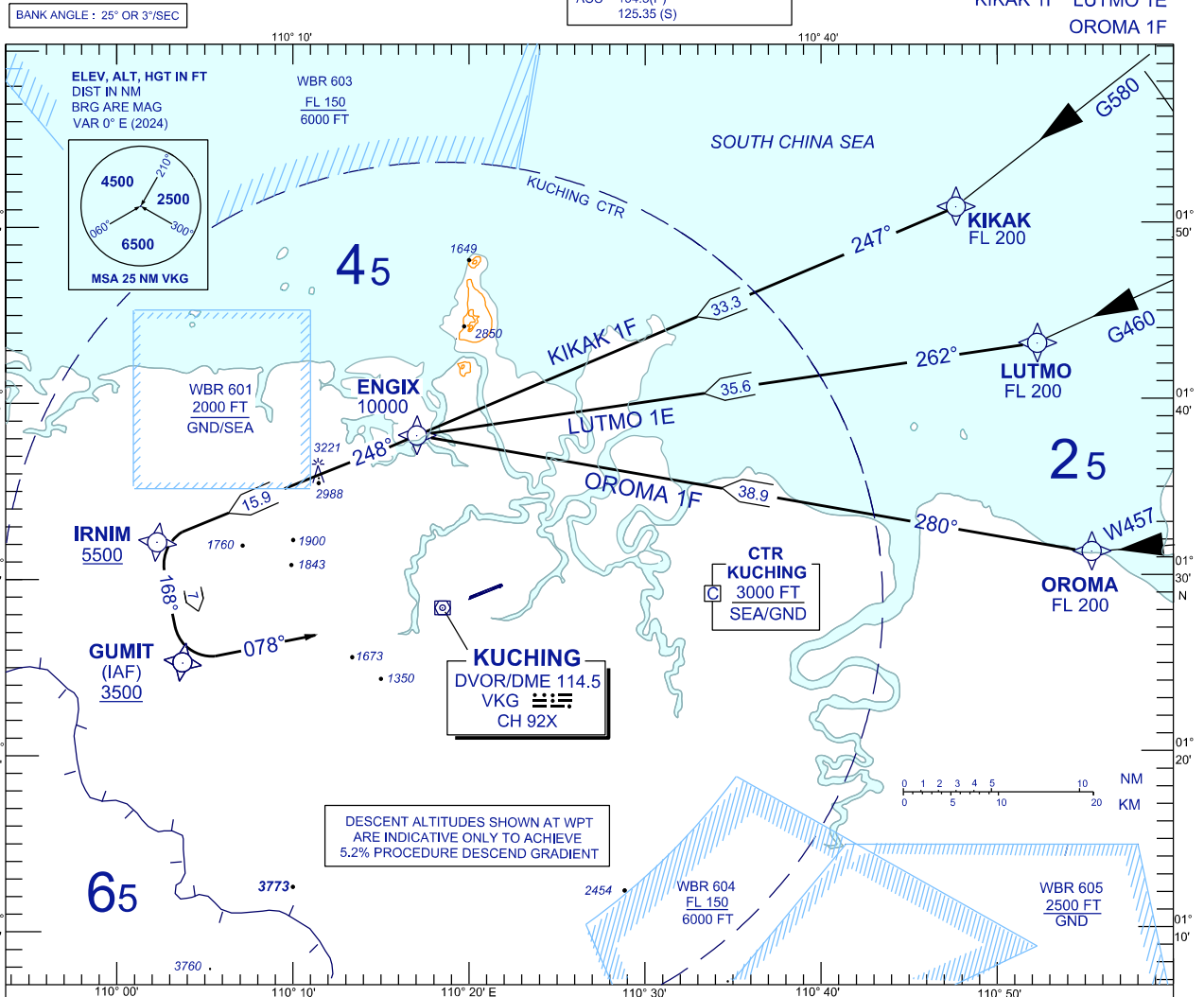
**STANDARD ARRIVAL CHART
INSTRUMENT (STAR) - ICAO**

TRANSITION ALTITUDE
11,000 FT

TWR	118.1 (P)	SMC	121.9
	121.7 (S)	ATIS	128.4
APP	120.2 (P)	FIS	134.75
	123.85 (S)		
ACC	134.5 (P)		
	125.35 (S)		

**KUCHING/KUCHING (WBGG)
RWY 07 (RNAV)**

KIKAK 1F LUTMO 1E
OROMA 1F



DESCENT ALTITUDES SHOWN AT WPT
ARE INDICATIVE ONLY TO ACHIEVE
5.2% PROCEDURE DESCEND GRADIENT

ARRIVALS

- KIKAK ONE FOXTROT :** FROM KIKAK TRACK TO ENIGX, THEN TRACK TO IRNIM AND TO GUMIT, INTERCEPT RDL 258 VKG FOR VOR Z RWY 07 APPROACH.
- LUTMO ONE ECHO :** FROM LUTMO TRACK TO ENIGX, THEN TRACK TO IRNIM AND TO GUMIT, INTERCEPT RDL 258 VKG FOR VOR Z RWY 07 APPROACH.
- OROMA ONE FOXTROT :** FROM OROMA TRACK TO ENIGX, THEN TRACK TO IRNIM AND TO GUMIT, INTERCEPT RDL 258 VKG FOR VOR Z RWY 07 APPROACH.

VERTICAL RESTRICTIONS :

ADHERE TO VERTICAL RESTRICTIONS eg . 5500 = NOT BELOW 5500 FT ON DESCENT UNLESS SPECIFICALLY CANCELLED BY ATC

COMMUNICATIONS FAILURE :

- * SQUAWK 7600
- * IF UNDER PILOT NAVIGATION, CONTINUE ON STAR AND LAND
- * IF UNDER RADAR VECTORED, MAINTAIN VECTOR FOR 1 MINUTE, IF BELOW MSA, CLIMB TO MSA, THEN TRACK TO INTERCEPT CLEARED OR PREVIOUSLY ASSIGNED STAR AND LAND

REPLACEMENT CHART