

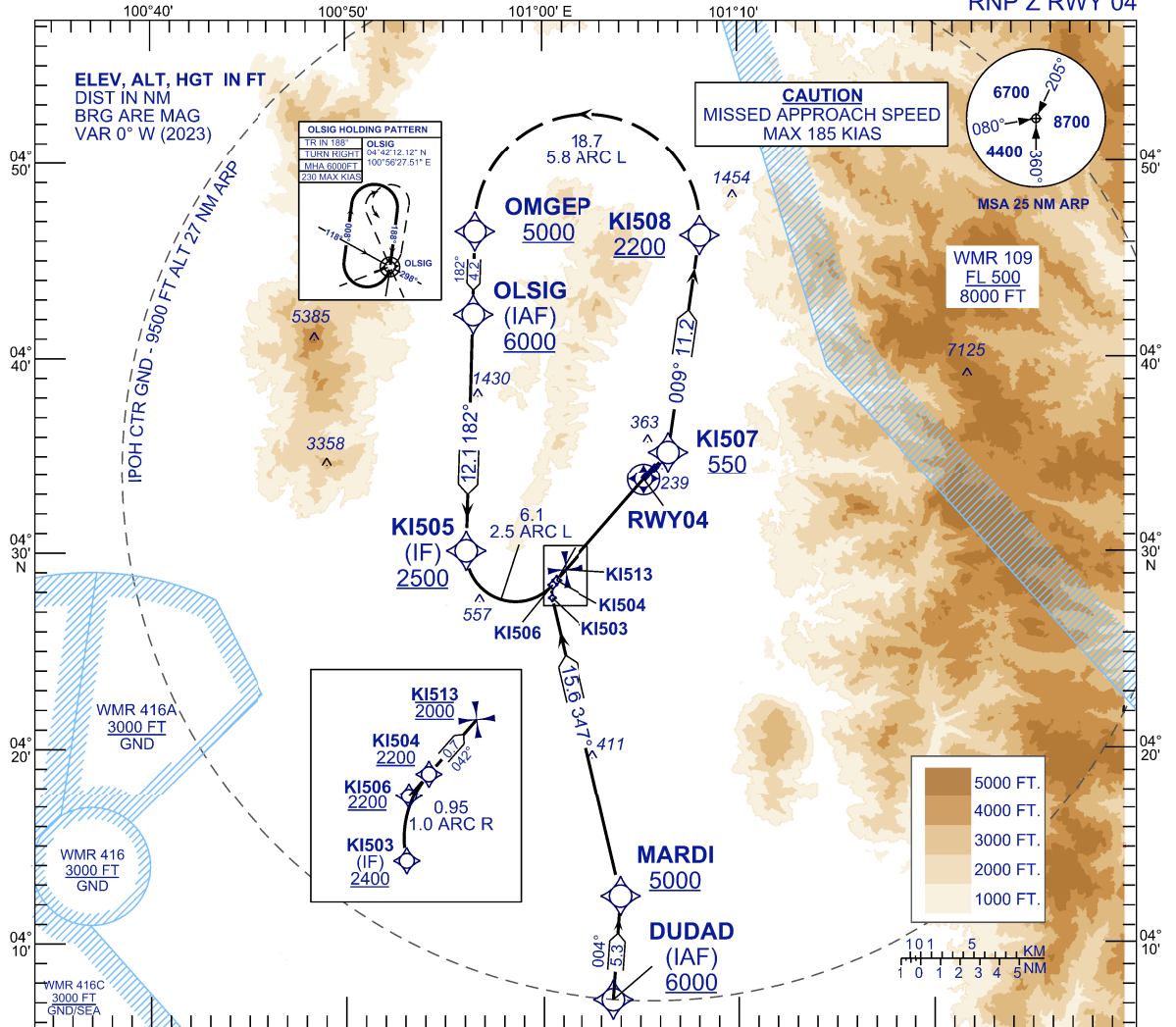
**INSTRUMENT
APPROACH
CHART - ICAO**

AERODROME ELEV 131 FT
HEIGHTS RELATED TO
THR RWY 04 - ELEV 131 FT

TWR	122.10
SMC	121.60
ATIS	127.05

**IPOH/SULTAN
AZLAN SHAH (WMKI)**

RNP Z RWY 04



TCH 53
VPA 2.8°

MISSED APPROACH
CLIMB TO 6000FT OR ABOVE VIA RNP Z MISSED
APCH TRACK TO OLSIG AND HOLD OR AS
DIRECTED BY ATC

CAUTION
MISSED APPROACH SPEED
MAX 185 KIAS

THR ELEV 131
TO THR 04 (NM)

TRANSITION LEVEL FL 130
TRANSITION ALT 11000

STRAIGHT IN-APPROACH	OCA (H)	
CATEGORY OF AIRCRAFT	C	D
RNP 0.3	488 (357)	
CIRCLING AND ALTERNATE N/A		
AUTHORIZATION REQUIRED		

NOTES

- 1) APPROACH NOT AUTHORIZED WHEN AIRPORT TEMPERATURE BELOW 15°C OR ABOVE 40°C.
- 2) RF REQUIRED.
- 3) WMKI ALTIMETER SETTING REQUIRED.
- 4) GNSS REQUIRED.
- 5) PAPI AND VERTICAL PATH ANGLE NOT COINCIDENT.
- 6) RNP 0.30 FROM IAFS TO KI507.
- 7) RNP 0.50 FROM KI507 TO KI504

DISTANCE IN NM. BEARING ARE MAGNETIC. ELEVATION IN FEET AMSL.

NEW CHART