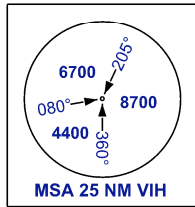
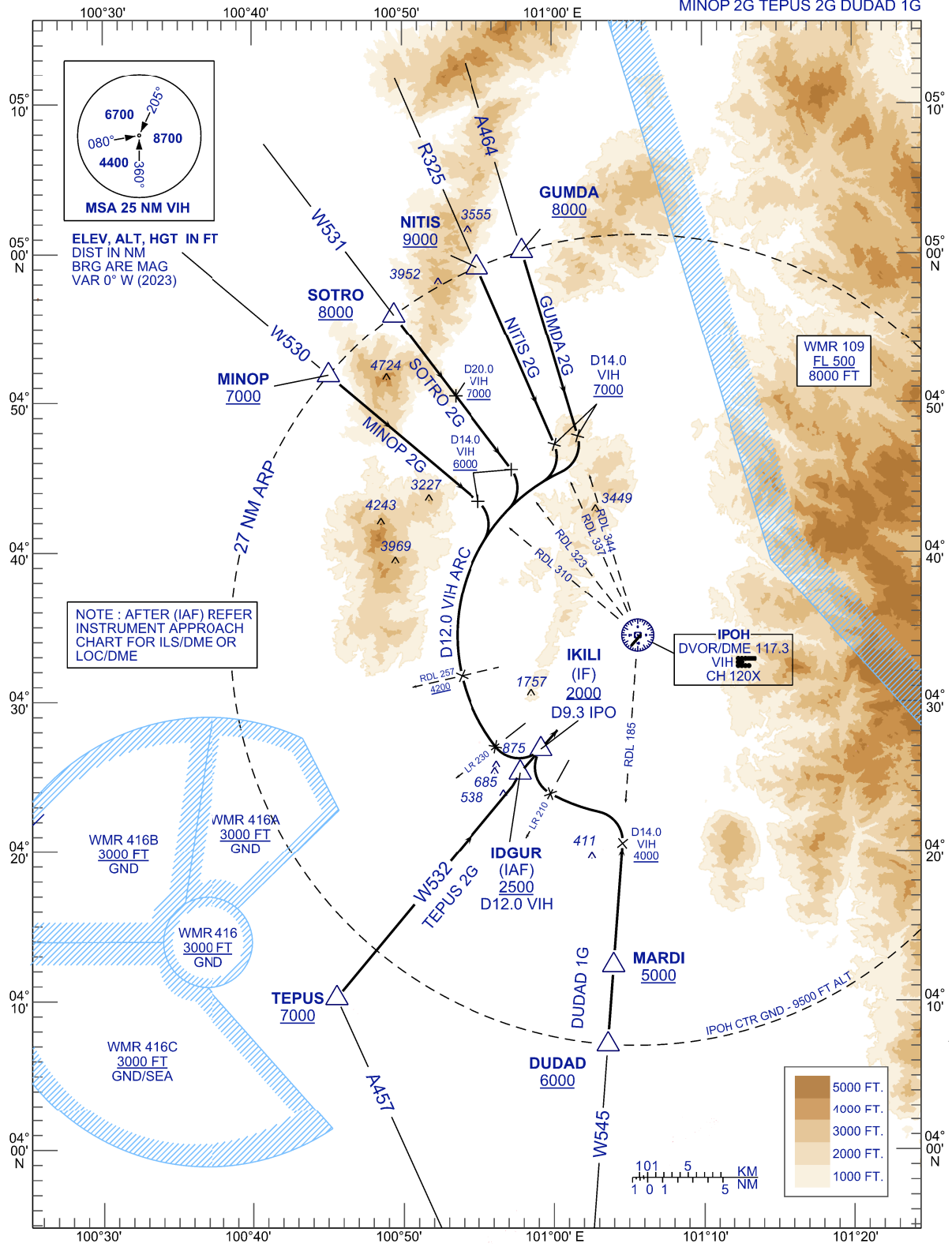


STANDARD ARRIVAL CHART
INSTRUMENT (STAR) - ICAO

**IPOH/SULTAN
AZLAN SHAH (WMKI)**
RWY 04 (VOR/DME ARC)
GUMDA 2G NITIS 2G SOTRO 2G
MINOP 2G TEPUS 2G DUDAD 1G

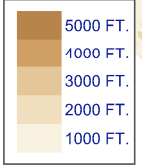
TWR	122.10
SMC	121.60
ATIS	127.05

TRANSITION ALTITUDE
11000 FT



ELEV, ALT, HGT IN FT
DIST IN NM
BRG ARE MAG
VAR 0° W (2023)

NOTE : AFTER (IAF) REFER
INSTRUMENT APPROACH
CHART FOR ILS/DME OR
LOC/DME



REPLACEMENT CHART