

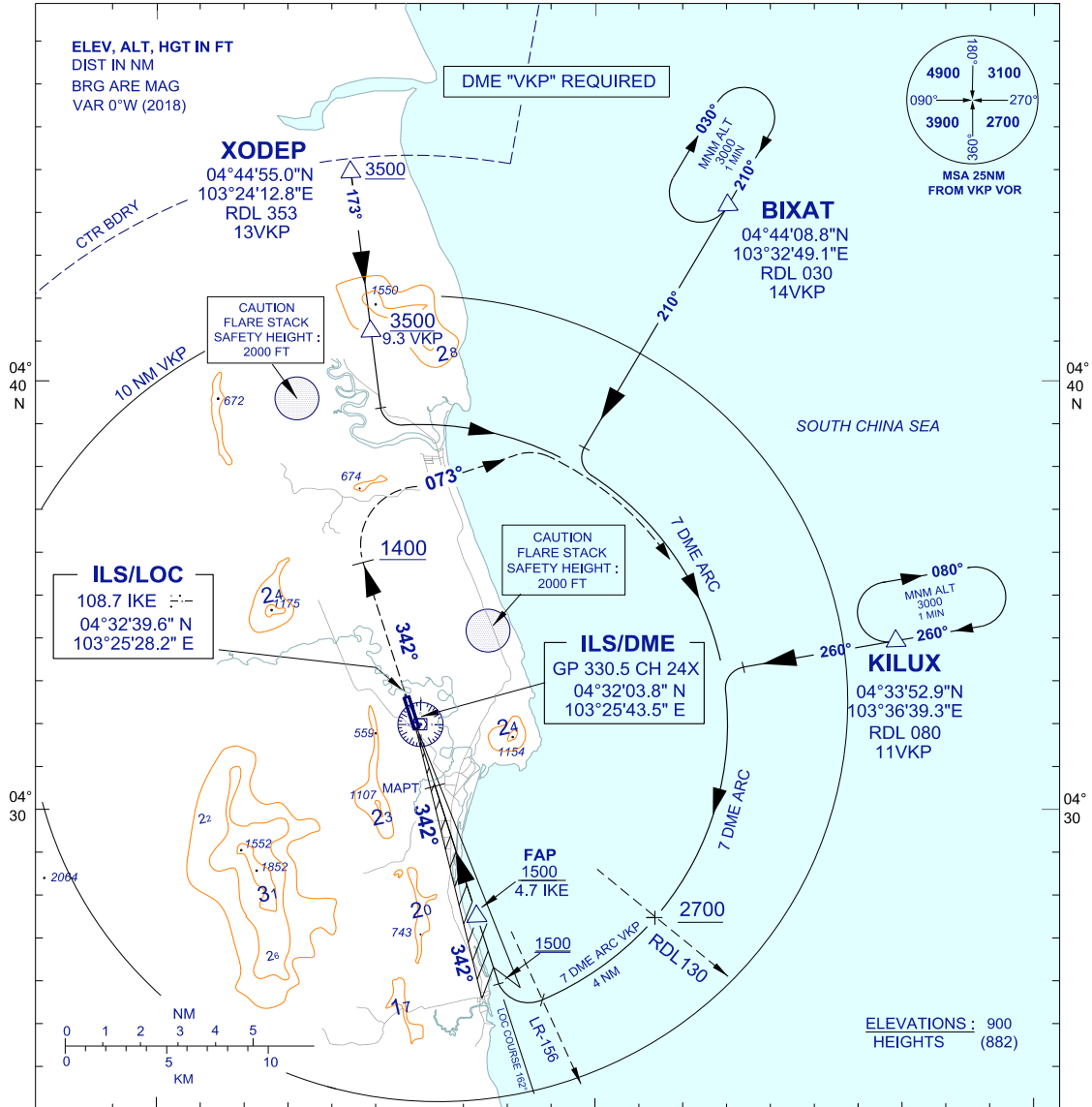
**INSTRUMENT
APPROACH
CHART - ICAO**

AERODROME ELEV 18 FT
HEIGHTS RELATED TO
THR RWY 34 - ELEV 18 FT

TWR 123.3
258.5
SMC 121.8
ATIS 128.25

**KERTEH/KERTEH (WMKE)
RWY 34**

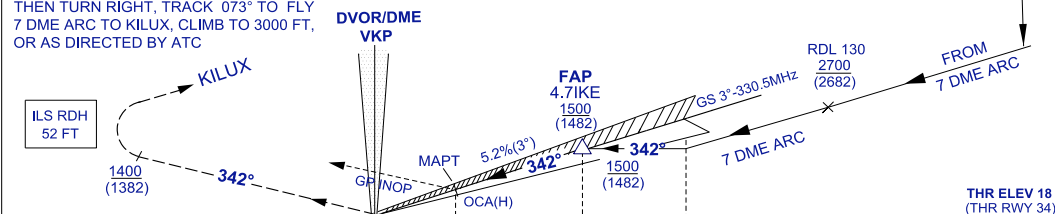
ILS X OR LOC X
CAT H



TRANSITION ALT 11000
103° 30' E
103° 40'

DIST BY DME (IKE)	4.7	3.7	2.7	1.9
ALT 3° APCH PATH (FT)	1500(1482)	1182(1164)	864(846)	620(602)

MISSED APPROACH
CLIMB ON TRACK 342° TO ABOVE 1400 FT,
THEN TURN RIGHT, TRACK 073° TO FLY
7 DME ARC TO KILUX, CLIMB TO 3000 FT,
OR AS DIRECTED BY ATC



NM FROM DME IKE
0 1 2 3 4 5 6 7
NM FROM DME VKP
5 0 1 2 3 4 5 6 7

OCA (H) FT		CAT H
STRAIGHT-IN APPROACH	CAT 1	300(282)
	LOC	620(602)/1.9 DME
CIRCLING/MNM VIS(NM)		CIRCLING NOT PERMITTED

GROUND SPEED(KT)			70	90	110
FAP - MAPT = 2.8 NM	MIN : SEC	2:24	1:52	1:31	
RATE OF DESCENT (3°)		FT/ MIN	380	473	578

CHANGES : ADD XODEP TO PLAN VIEW