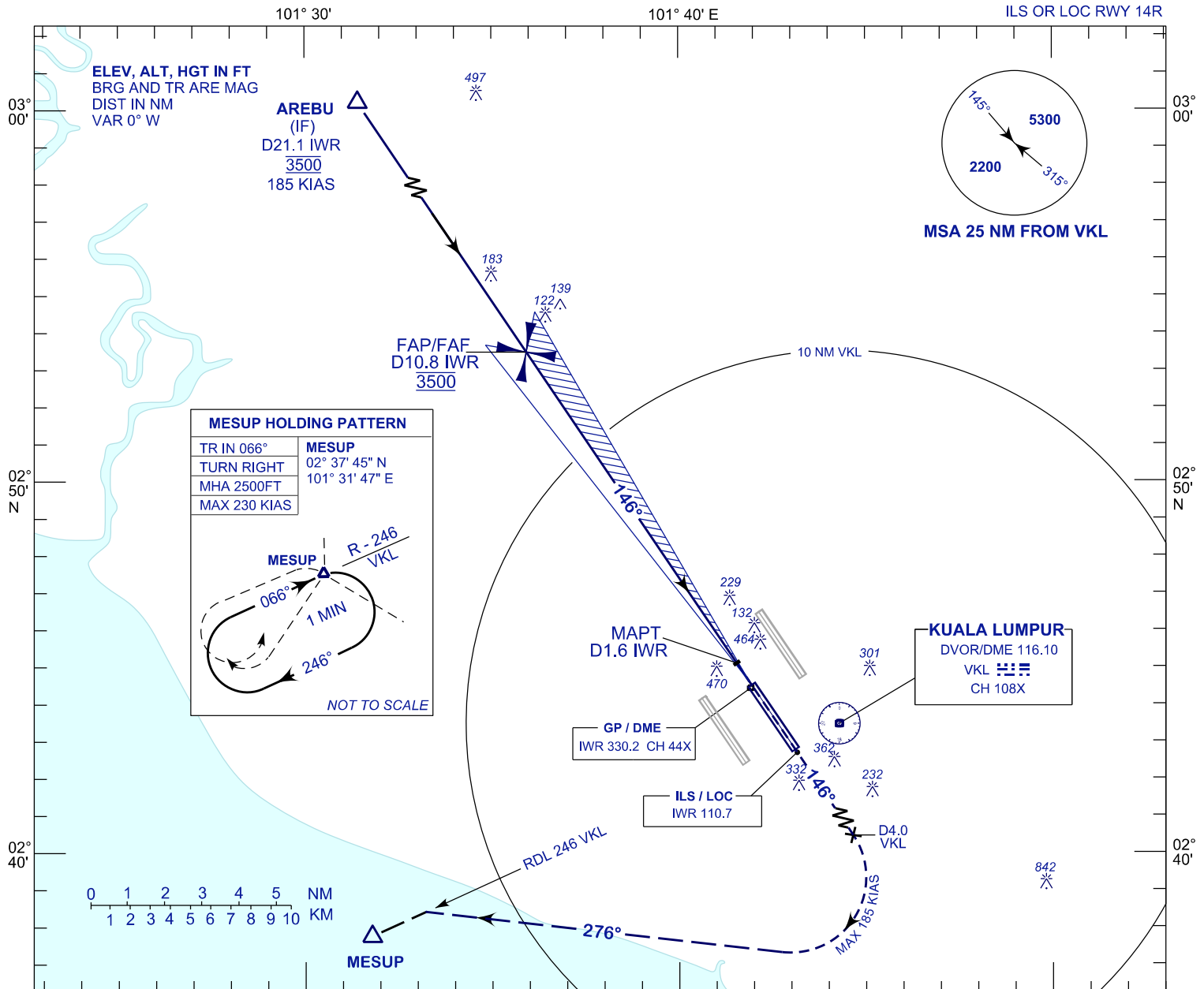


**INSTRUMENT  
APPROACH  
CHART - ICAO**

**AERODROME ELEV 69 FT**  
HEIGHT RELATED TO  
THR RWY 14R - ELEV 54 FT

APP 118.65 120.35 135.75	TWR 118.80	SMC 121.80 122.525	ATIS 128.05
-----------------------------------	---------------	--------------------------	----------------

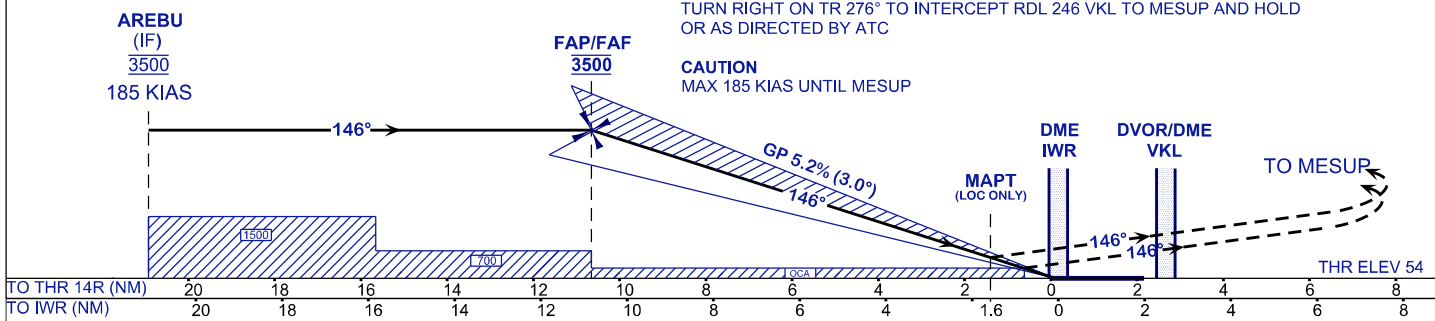
**SEPANG/KL INTERNATIONAL  
AIRPORT (WMKK)**



USE QNH ILS RDH 52 FT TRANSITION LEVEL FL130  
TRANSITION ALT 11 000

**MISSED APPROACH**  
AT MAPT CLIMB 2500 FT ON TR 146°, ON PASSING 4.0 DME VKL  
TURN RIGHT ON TR 276° TO INTERCEPT RDL 246 VKL TO MESUP AND HOLD  
OR AS DIRECTED BY ATC

**CAUTION**  
MAX 185 KIAS UNTIL MESUP



OCA (OCH)	A	B	C	D
ILS/DME CAT I	300 (246)			
LOC/DME (GP INOP)	650 (596)			

GROUND SPEED (GS)	KT	80	100	120	140	160	180
FAP - RWY14R (10.7 NM)	MIN:SEC	8:00	6:24	5:20	4:35	4:00	3:34
RATE OF DESCEND (318.4 FT/NM)	FT/MIN	420	530	630	740	840	950

DME IWR	NM	10.9	9.9	8.9	7.9	6.9	5.9	4.9	3.9	2.9	1.9	0.9
DIST THR/RWY14R	NM	10.7	9.7	8.7	7.7	6.7	5.7	4.7	3.7	2.7	1.7	0.7
ALTITUDE	FT	3500	3195	2877	2558	2240	1921	1603	1284	966	647	329

**CHANGES** : REMOVE OBSTACLE 1864 IN PLAN VIEW.