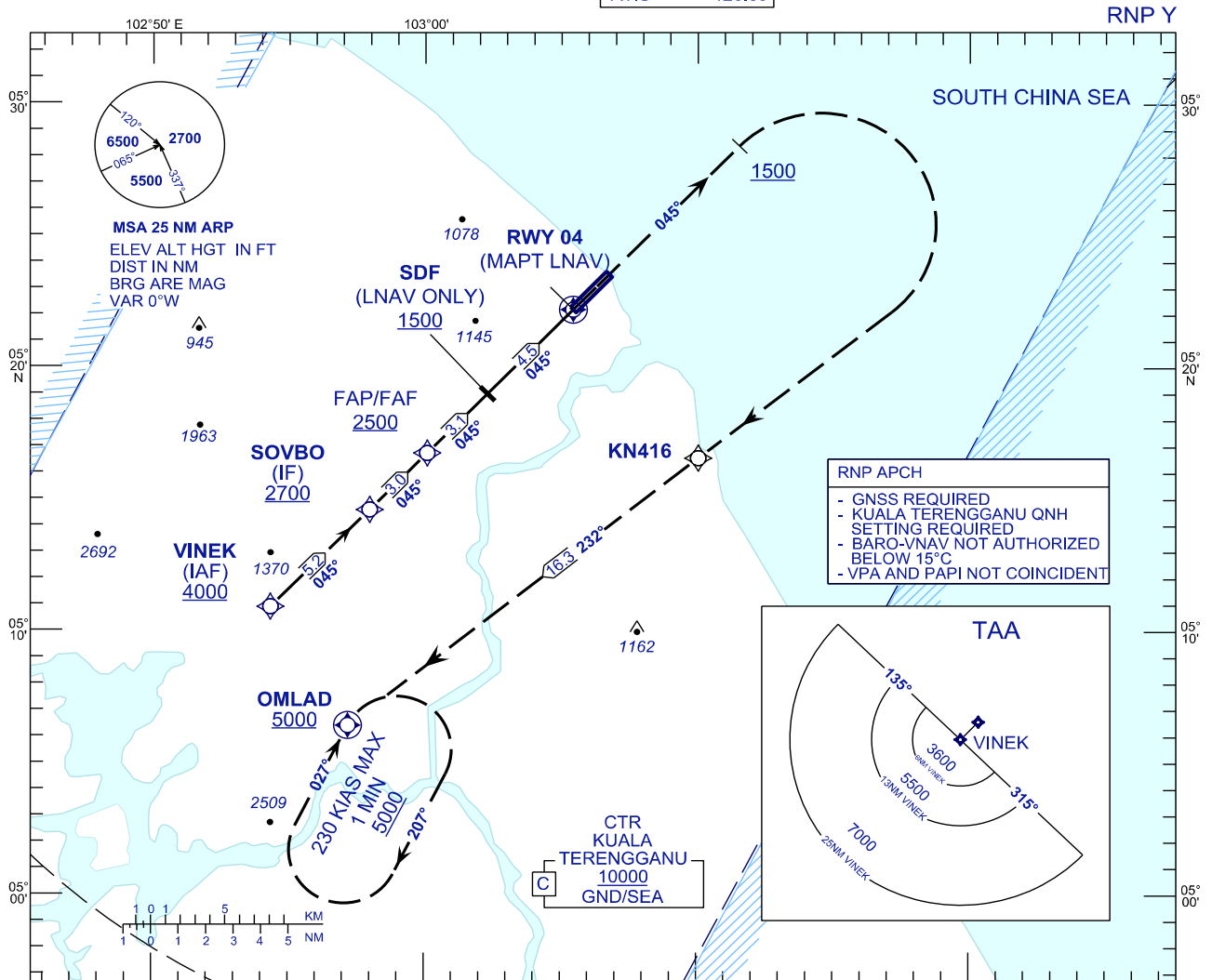


**INSTRUMENT
APPROACH
CHART - ICAO**

AERODROME ELEV 20 FT
HEIGHT RELATED TO
THR RWY 04 - ELEV 19 FT

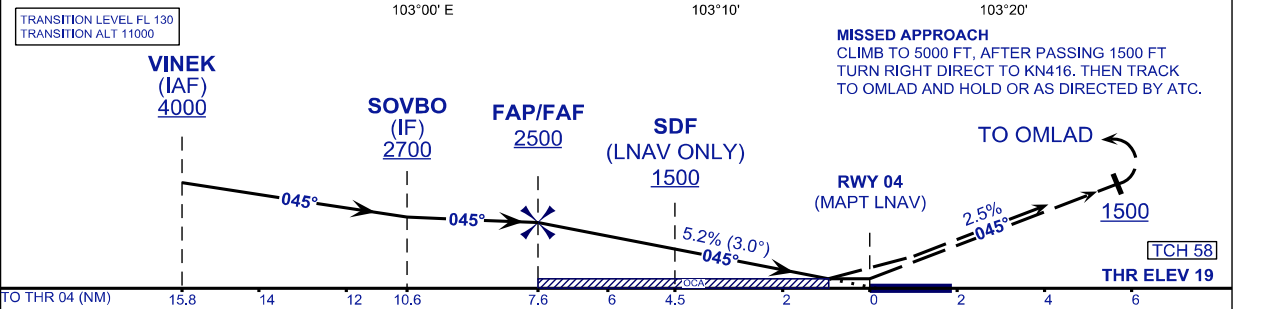
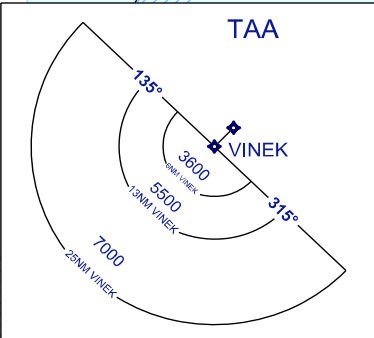
APP	123.6
	235.32
	121.5
TWR	119.05
SMC	121.6
ATIS	126.65

**KUALA TERENGGANU/
SULTAN MAHMUD (WMKN)
RWY 04**



RNP APCH

- GNSS REQUIRED
- KUALA TERENGGANU QNH SETTING REQUIRED
- BARO-VNAV NOT AUTHORIZED BELOW 15°C
- VPA AND PAPI NOT COINCIDENT



OCA/H					
ACFT CAT.	A	B	C	D	
STRAIGHT IN APPROACH	LNAV	374 (355)			
	LNAV/VNAV	374 (355)			

DISTANCE TO THRESHOLD (NM)	7.6	6.6	5.6	4.6	3.6	2.6	1.6	0.6
ALTITUDE (FT)	2500	2179	1861	1542	1224	905	587	269

GROUND SPEED (GS)	KTS	80	100	120	140	160	180
FAP - RWY04 (7.6 NM)	MIN:SEC	5:42	4:34	3:48	3:16	2:51	2:32
RATE OF DESCEND (318.4 FT/NM)	FT/MIN	420	530	640	740	850	960

CHANGES : OCA/H LNAV (354) TO READ AS (355).