

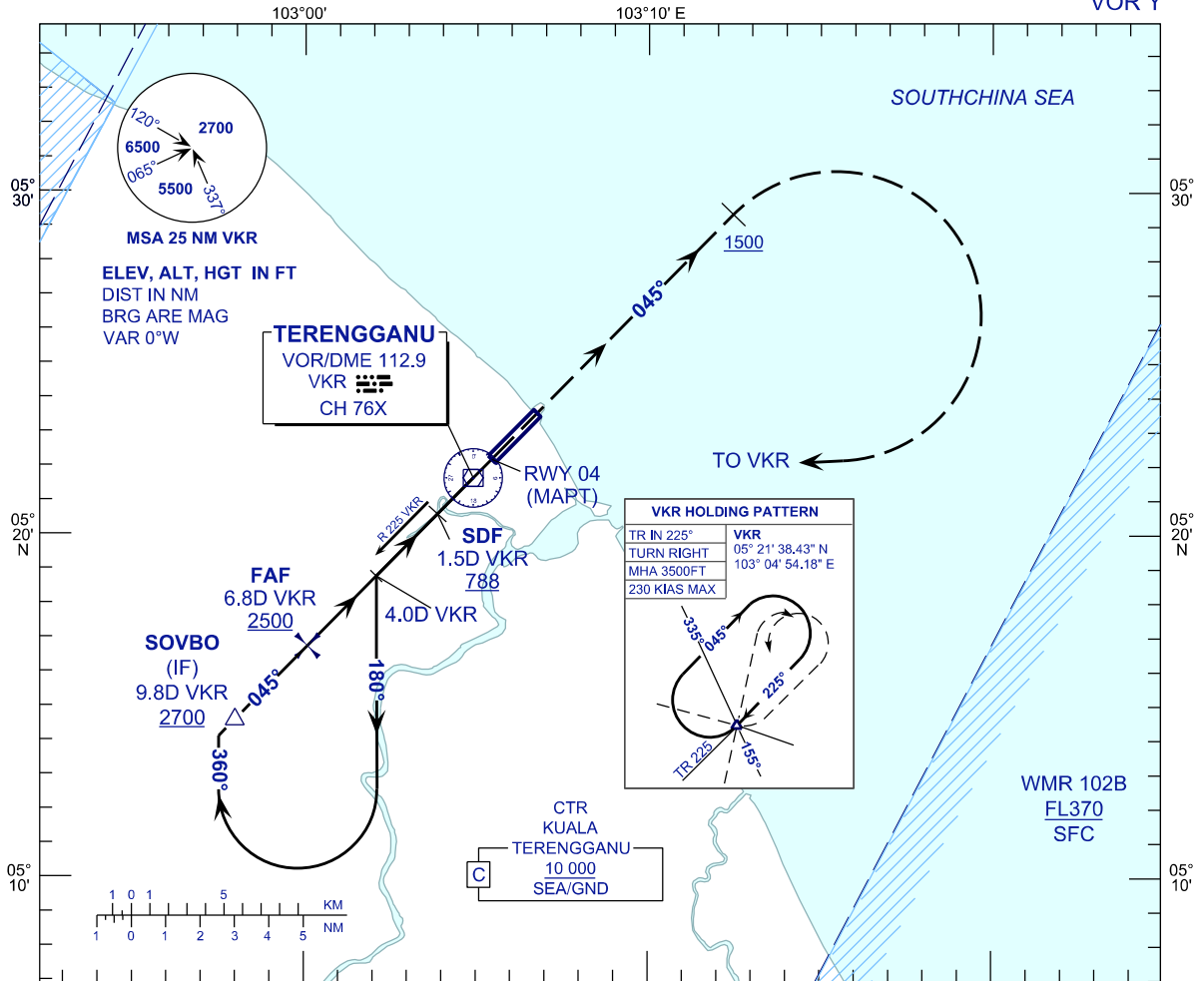
**INSTRUMENT
APPROACH
CHART - ICAO**

AERODROME ELEV 20 FT
HEIGHT RELATED TO
THR RWY 04 - ELEV 19 FT

APP	123.6
	235.32
TWR	121.5
SMC	119.05
ATIS	121.6
	126.65

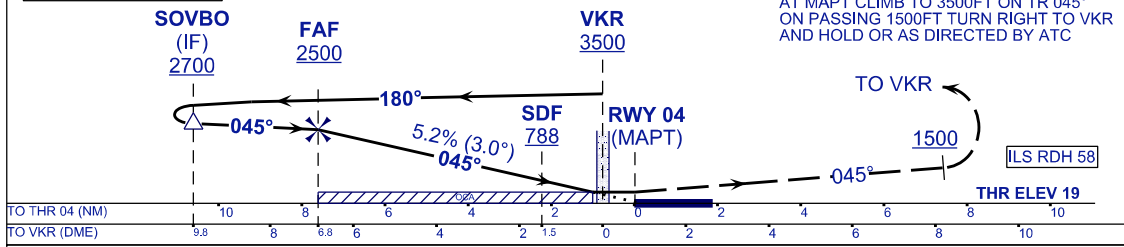
**KUALA TERENGGANU/
SULTAN MAHMUD (WMKN)
RWY 04**

VOR Y



TRANSITION LEVEL FL130
TRANSITION ALT 11000

MISSED APPROACH
AT MAPT CLIMB TO 3500FT ON TR 045°
ON PASSING 1500FT TURN RIGHT TO VKR
AND HOLD OR AS DIRECTED BY ATC



OCA (OCH)	A	B	C	D
VOR/DME	390 (371)			

DME VKR	NM	6.8	5.8	4.8	3.8	2.8	1.8	0.8	0.2
DIST THR/RWY04	NM	7.6	6.6	5.6	4.6	3.6	2.6	1.6	0.6
ALTITUDE	FT	2500	2178	1858	1538	1218	898	579	260

GROUND SPEED (GS)	KNOTS	80	100	120	140	160	180
FAF - RWY04 (7.6 NM)	MIN:SEC	5:42	4:34	3:48	3:16	2:51	2:32
RATE OF DESCEND (318.4 FT/NM)	FT/MIN	430	530	640	750	850	960

CHANGES : VOR/DME (370) TO READ AS (371).