

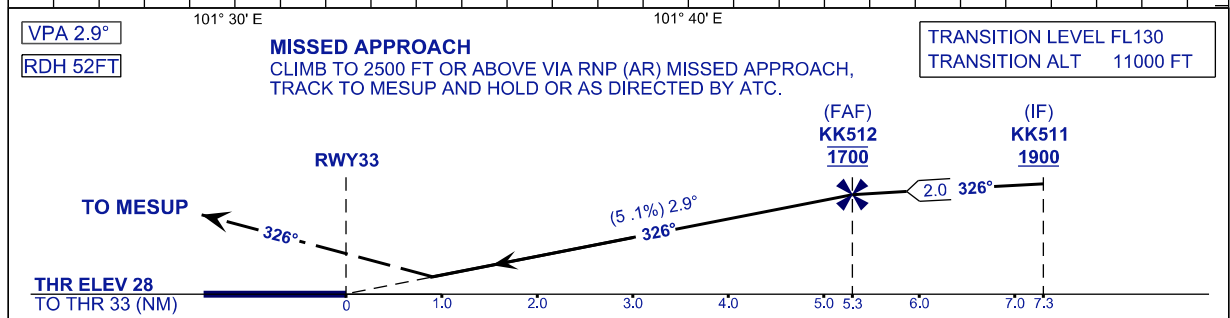
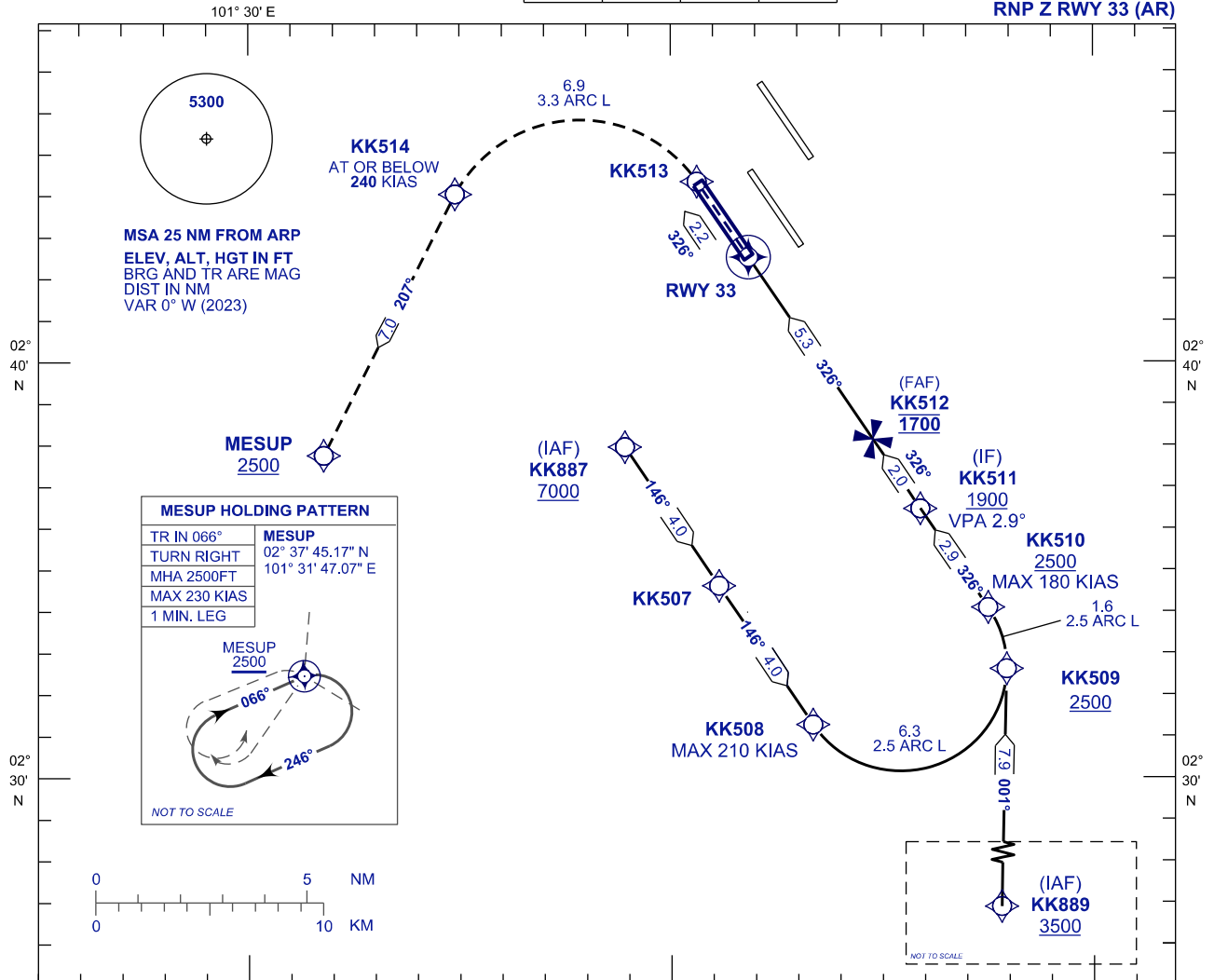
**INSTRUMENT
APPROACH
CHART - ICAO**

AERODROME ELEV 69 FT
HEIGHT RELATED TO
THR RWY 33 - ELEV 28 FT

APP	TWR	SMC	ATIS
119.45 125.85 125.10	119.80	118.05	128.05

**SEPANG/KL INTERNATIONAL
AIRPORT (WMKK)**

RNP Z RWY 33 (AR)



STRAIGHT-IN APPROACH	OCA (OCH)
CATEGORY OF AIRCRAFT	C D
RNP (0.30)	530 (502)
CIRCLING AND ALTERNATE N/A	

AUTHORIZATION REQUIRED

NOTES

- GNSS REQUIRED.
- RF REQUIRED.
- APPROACH NOT AUTHORIZED WHEN AIRPORT TEMPERATURE BELOW 18°C OR ABOVE 40°C.
- WMKK ALTIMETER SETTING REQUIRED.
- PAPI AND VERTICAL PATH ANGLE NOT COINCIDENT.
- RNP 0.30 FROM KK887 & KK889 TO THRESHOLD.
- RNP 0.50 FROM RWY33 TO KK513.

DISTANCE IN NM. BEARING ARE MAGNETIC.
ELEVATION IN FEET AMSL.

CHANGES : FOR WPT KK513 CHANGE FM FLY-OVER TO FLY-BY.