

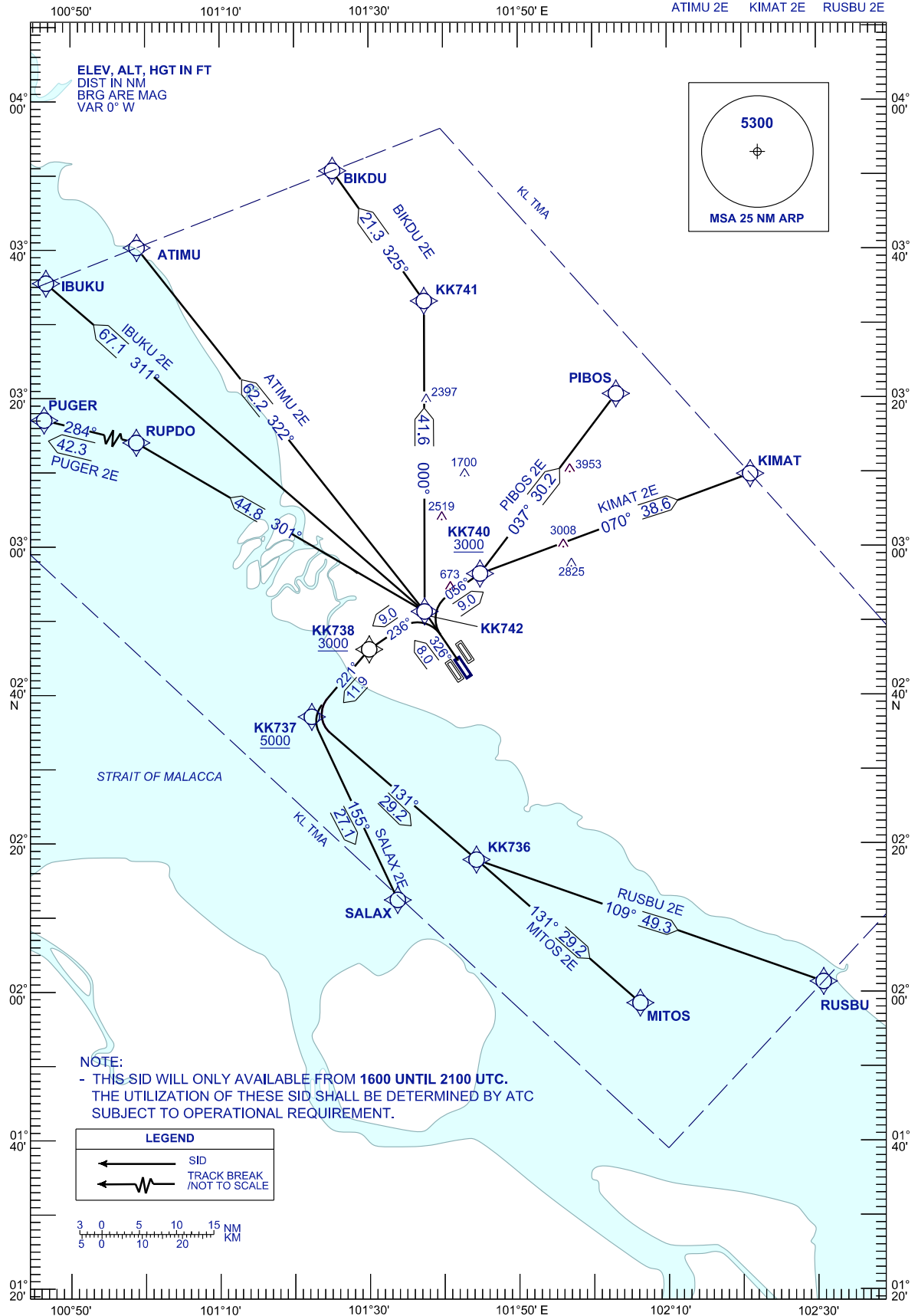
**STANDARD DEPARTURE CHART  
INSTRUMENT (SID) - ICAO**

TRANSITION ALT 11000 FT

|     |         |      |         |
|-----|---------|------|---------|
| APP | 124.200 | TWR  | 118.500 |
|     | 118.650 |      | GND     |
|     | 135.750 | ATIS | 126.450 |

**SEPANG/KL INTERNATIONAL  
AIRPORT (WMKK)  
RNP 1 (GNSS) RWY 32L**

PUGER 2E BIKDU 2E SALAX 2E  
IBUKU 2E PIBOS 2E MITOS 2E  
ATIMU 2E KIMAT 2E RUSBU 2E



CHANGES: ATIS FREQUENCY.