

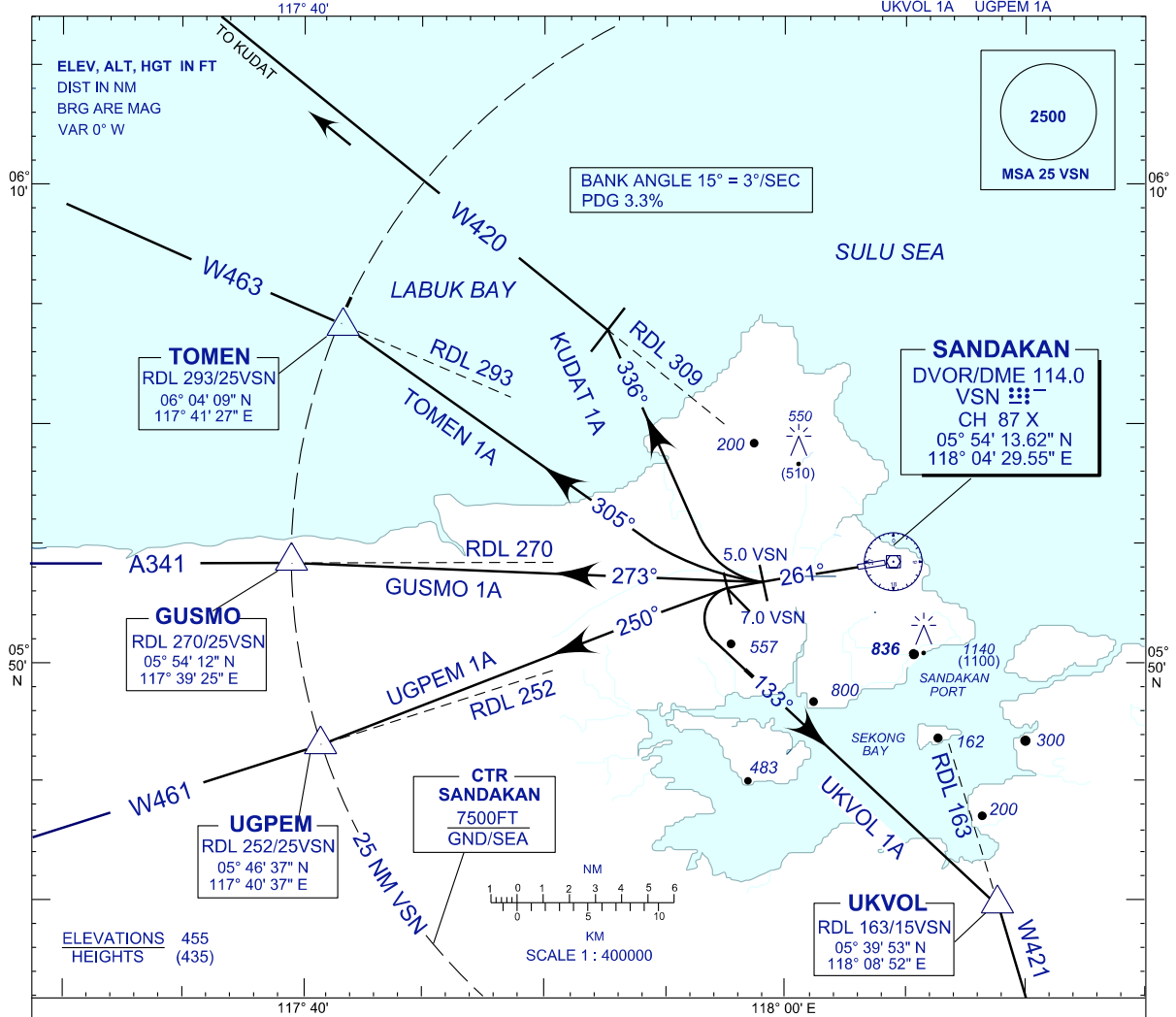
**STANDARD DEPARTURE CHART  
INSTRUMENT (SID) - ICAO**

TRANSITION ALTITUDE  
11000FT

SMC 121.9  
TWR 122.05  
APP 123.2  
ATIS 128.2

**SANDAKAN/SANDAKAN (WBKS)  
RWY 26**

KUDAT 1A TOMEN 1A GUSMO 1A  
UKVOL 1A UGPEM 1A



**KUDAT 1 ALPHA DEPARTURE  
TOMEN 1 ALPHA DEPARTURE  
GUSMO 1 ALPHA DEPARTURE  
UGPEM 1 ALPHA DEPARTURE  
UKVOL 1 ALPHA DEPARTURE**

**KUDAT 1 ALPHA DEPARTURE**

- \* TRACK 261° AT 5.0 DME VSN TURN RIGHT
- \* TRACK 336° INTERCEPT RDL 309 VSN TO KUDAT

**TOMEN 1 ALPHA DEPARTURE**

- \* TRACK 261° AT 5.0 DME VSN TURN RIGHT
- \* TRACK 305° INTERCEPT RDL 293 VSN TO TOMEN

**GUSMO 1 ALPHA DEPARTURE**

- \* TRACK 261°
- \* AT 5.0 VSN TRACK 273° TO INTERCEPT RDL 270 TO GUSMO

**UKVOL 1 ALPHA DEPARTURE**

- \* TRACK 261° AT 7.0 DME VSN TURN LEFT
- \* TRACK 133° TO INTERCEPT RDL 163 VSN TO UKVOL

**UGPEM 1 ALPHA DEPARTURE**

- \* TRACK 261° AT 7.0 DME VSN TURN LEFT
- \* TRACK 250° TO INTERCEPT RDL 252 VSN TO UGPEM

CHANGES : SID DEPARTURE NAME UGVOL TO READ AS UKVOL IN TEXT VIEW.