

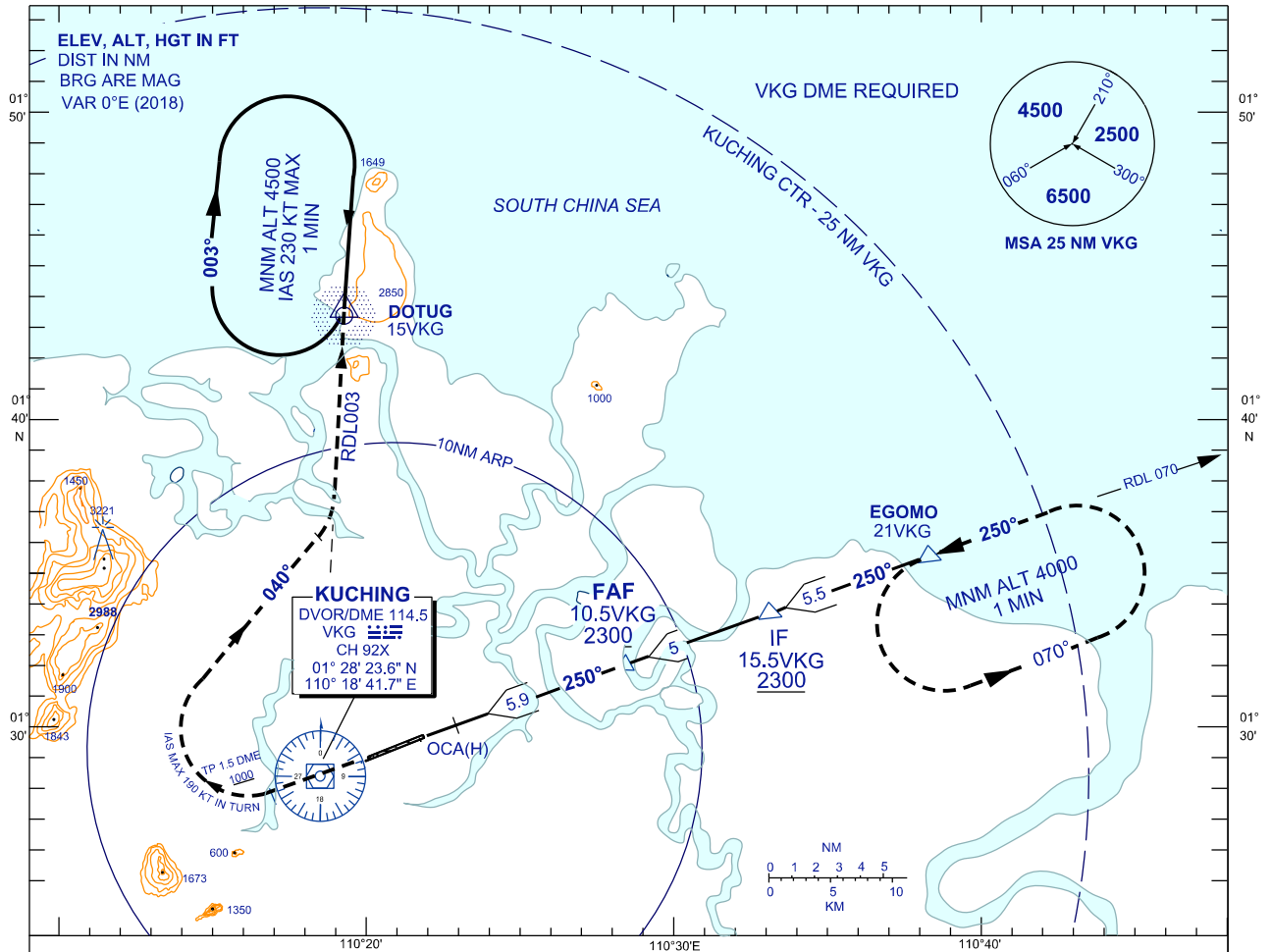
**INSTRUMENT
APPROACH
CHART - ICAO**

AERODROME ELEV 88 FT
HEIGHTS RELATED TO
THR RWY 25 - ELEV 42 FT

TWR	118.1 (P)	SMC	121.9
	121.7 (S)	ATIS	128.4
APP	120.2 (P)	FIS	134.75
	123.85 (S)		
ACC	134.5 (P)		
	125.35 (S)		

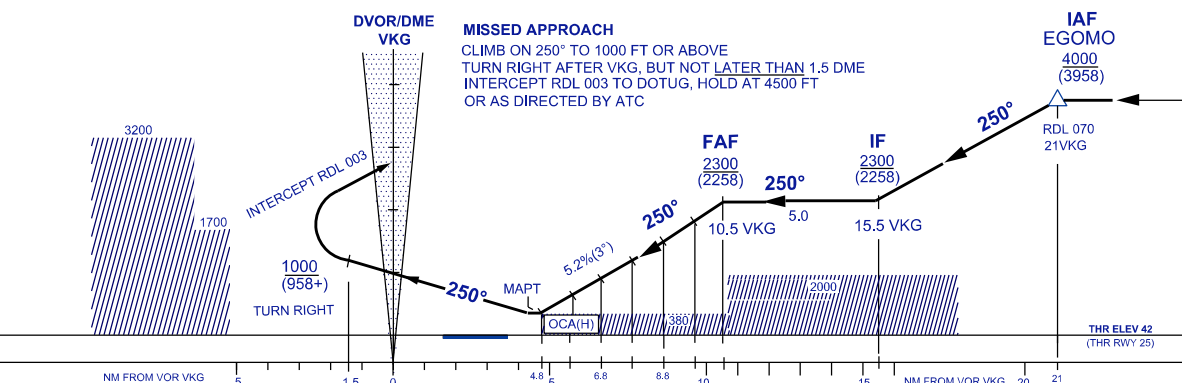
**KUCHING/KUCHING (WBGG)
RWY 25**

VOR Z
(FROM EGOMO)



DIST BY DME (NM)	10.8	9.8	8.8	7.8	6.8	5.8	4.8
ALT 3° APCH PATH (FT)	2300 (2258)	1982 (1940)	1664 (1622)	1346 (1304)	1028 (986)	710 (668)	443 (401)

TRANSITION ALT 11,000
USE QNH



OCA (H) FT	A	B	C	D
STRAIGHT-IN APPROACH	443 (401) / 4.8 VKG			
CIRCLING	750 (662)	750 (662)	1200 (1112)	1200 (1112)

GROUND SPEED(KT)		70	90	120	150	180	210
FAF - MAPT = 5.7NM	MIN : SEC	4:53	3:48	2:51	2:17	1:54	1:36
	RATE OF DESCENT (3°)	FT/ MIN	373	479	639	799	959

CHANGES : REMOVE ILS/LOC INFORMATION FROM THE CHARTS.