

STANDARD RADAR DEPARTURE

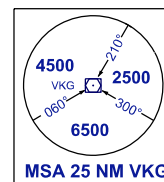
TRANSITION ALTITUDE
11 000 FT

TWR	118.1 (P)	SMC	121.9
	121.7 (S)	ATIS	128.4
APP	120.2 (P)	FIS	134.75
	123.85 (S)		
ACC	134.5 (P)		
	125.35 (S)		

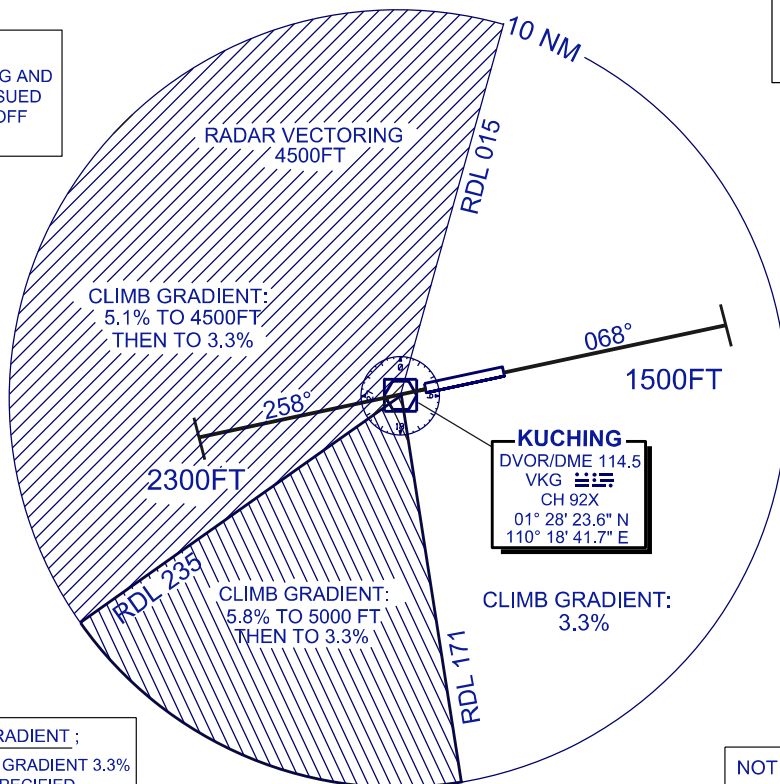
**KUCHING/KUCHING (WBGG)
RWY 25/07**

ELEV. ALT. HGT IN FT
DIST IN NM
BRG ARE MAG
VAR 0° E (2017)

CAUTION:
USE RECOMMENDED CLIMB GRADIENT
FROM LIFT-OFF IF ASSIGNED HEADING WILL
TAKE AIRCRAFT INTO HATCHED SECTOR



NOTE:
ASSIGNED HEADING AND
LEVEL WILL BE ISSUED
WITH THE TAKE OFF
CLEARANCE



CLIMB GRADIENT ;
MINIMUM CLIMB GRADIENT 3.3%
UNLESS SPECIFIED

NOT TO SCALE

KUCHING
DVOR/DME 114.5
VKG
CH 92X
01° 28' 23.6" N
110° 18' 41.7" E

**STANDARD RADAR DEPARTURES
KUCHING RADAR ONE DEPARTURE**

RWY 25

- TRACK HEADING 258°
- AFTER PASSING 2300FT OR ABOVE, TURN TO ASSIGNED RADAR HEADING
- CONTACT APPROACH AIRBORNE
ADVICE : DIRECTION OF TURN AND ASSGND HEADING LEVEL PASSING TO NEAREST 100FT ASSIGNED LEVEL

RWY 07

- TRACK HEADING 068°
- AFTER PASSING 1500FT OR ABOVE, TURN TO ASSIGNED RADAR HEADING
- CONTACT APPROACH AIRBORNE
ADVICE : DIRECTION OF TURN AND ASSGND HEADING LEVEL PASSING TO NEAREST 100FT ASSIGNED LEVEL

RATE OF CLIMB IN FT/MIN

GROUND SPEED (KT)	120	130	140	150	160	170	180	190	200	220	240	260	280	300	
GRADIENT	3.3%	401	434	468	502	535	569	602	635	669	736	803	869	936	1003
	5.1%	620	671	723	775	826	878	930	981	1033	1136	1240	1342	1446	1549
	5.8%	705	764	822	881	940	998	1057	1116	1175	1292	1410	1527	1645	1762

VERTICAL RESTRICTIONS

ADHERE TO VERTICAL RESTRICTIONS eg 1500 FT = NOT BELOW 1500 FT ON CLIMB UNLESS SPECIFICALLY SPECIFIED BY ATC

COMMUNICATIONS FAILURE:

- IMMEDIATELY SQUAWK 7600
- MAINTAIN ASSIGNED HEADING - CLIMB TO MSA OR LAST ASSIGNED LEVEL IF HIGHER
- MAINTAIN MSA OR ASSIGNED LEVEL, AS APPLICABLE, FOR 2 MINUTES
- THEN CLIMB TO FLIGHT PLANNED LEVEL AND INTERCEPT FLIGHT PLANNED TRACK (AS AMENDED BY ATC, IF APPLICABLE)

CHANGES : CHANGE COORDINATES FOR KUCHING DVOR/DME