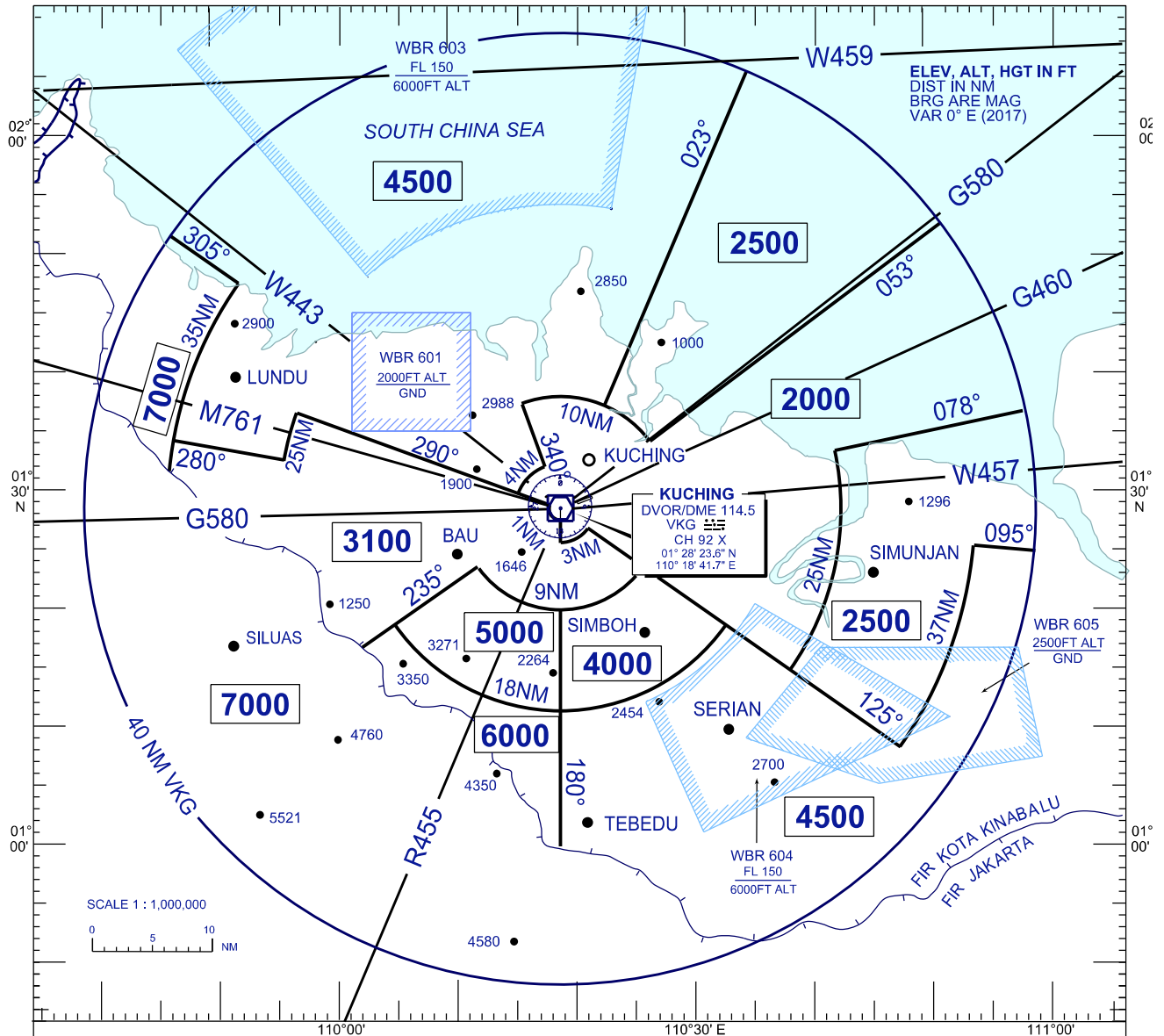


**ATC SURVEILLANCE MINIMUM
ALTITUDE CHART - ICAO**

AERODROME ELEV 88 FT
TRANSITION ALT 11000 FT

APP 120.0 (P)
123.85 (S)

KUCHING/KUCHING (WBGG)



LOSS OF RADIO COMMUNICATION PROCEDURES :

NOTES :

1. SET TRANSPONDER TO 7600
2. (a) IN VMC
CONTINUE APPROACH VISUALLY FOR THE DUTY RUNWAY AND LAND ; OR
- (b) IN IMC
MAINTAIN LAST ASSIGNED ALTITUDE ; OR CLIMB TO 4500 FT IF THE LAST ASSIGNED ALTITUDE IS BELOW 4500FT AND TRACK DIRECT FOR VKG
3. ONCE AT THE HOLDING FACILITY VKG CARRY OUT THE STANDARD RADIO COMMUNICATION FAILURE PROCEDURES.

THE RVA COMPRISES AN AREA 40NM RADIUS OF VKG VOR/DME STATION. ALL BEARINGS ARE MAGNETIC AND TAKEN FROM VKG ONLY SIGNIFICANT OBSTRUCTIONS AND SPOT HEIGHTS ARE SHOWN.THESE ARE BASED ON QNH

ALTITUDES SHOWN ARE AT THE MINIMUM 1000FT SAFE USEABLE ALTITUDES AND PROVIDE AT LEAST VERTICAL CLEARANCE ABOVE THE HIGHEST OBSTACLE WITHIN 5NM OF THE AIRCRAFT'S POSITION.

CHANGES : AMEND FREQUENCY VALUE FOR APP.