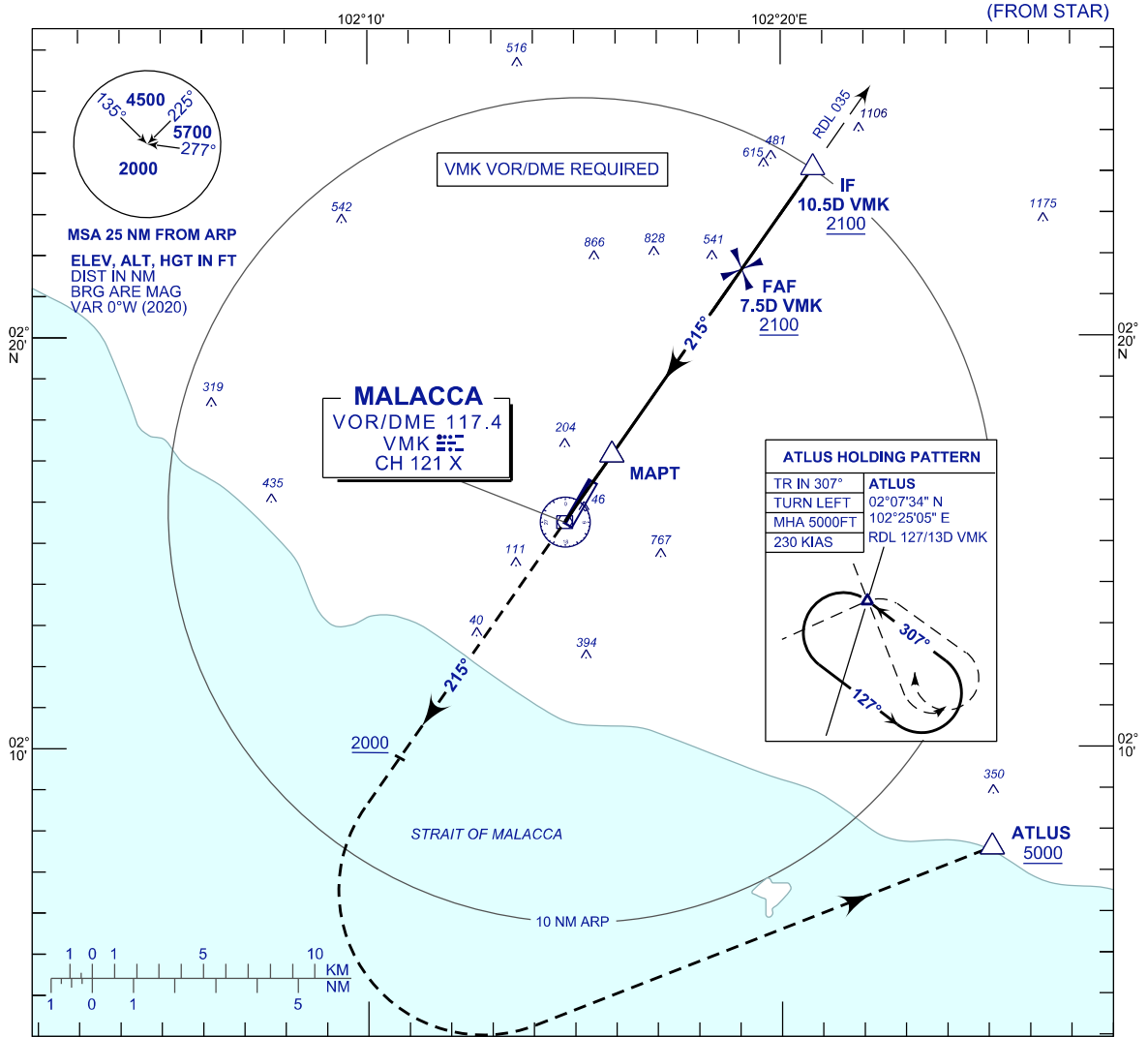


**INSTRUMENT  
APPROACH  
CHART - ICAO**

**AERODROME ELEV 39 FT**  
HEIGHTS RELATED TO  
THR RWY 21 - ELEV 39 FT

TWR	118.00
SMC	121.60
ATIS	127.45

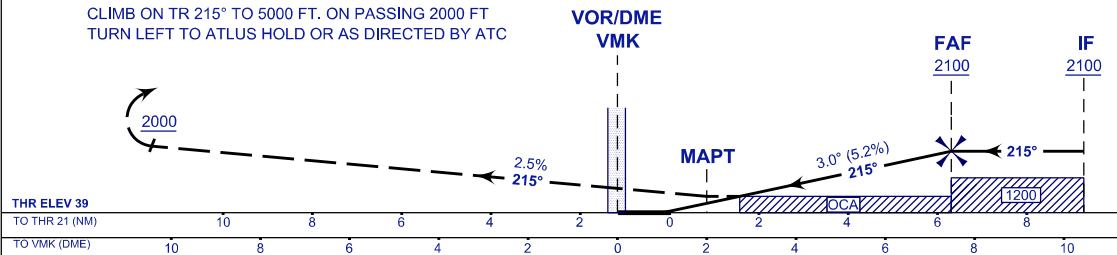
**MALACCA/MALACCA (WMKM)**  
VOR Y (CAT C) RWY 21



TRANSITION ALT 11 000

**MISSED APPROACH**

CLIMB ON TR 215° TO 5000 FT. ON PASSING 2000 FT  
TURN LEFT TO ATLAS HOLD OR AS DIRECTED BY ATC



OCA (OCH)	C
VOR/DME	590 (551)

DIST DME VMK	NM	7.5	6.5	5.5	4.5	3.5	2.5	1.5
DIST THR/RWY 21	NM	6.3	5.3	4.3	3.3	2.3	1.3	0.3
ALTITUDE	FT	2100	1782	1463	1144	826	507	188

GS	KT	80	100	120	140	160	180
FAF - RWY21 (6.3NM)	MIN:SEC	4:45	3:48	3:10	2:43	2:23	2:07
RATE OF DESCEND (318.5 FT/NM)	FT/MIN	420	530	630	740	840	950

CHANGES: AERODROME ELEVATION