

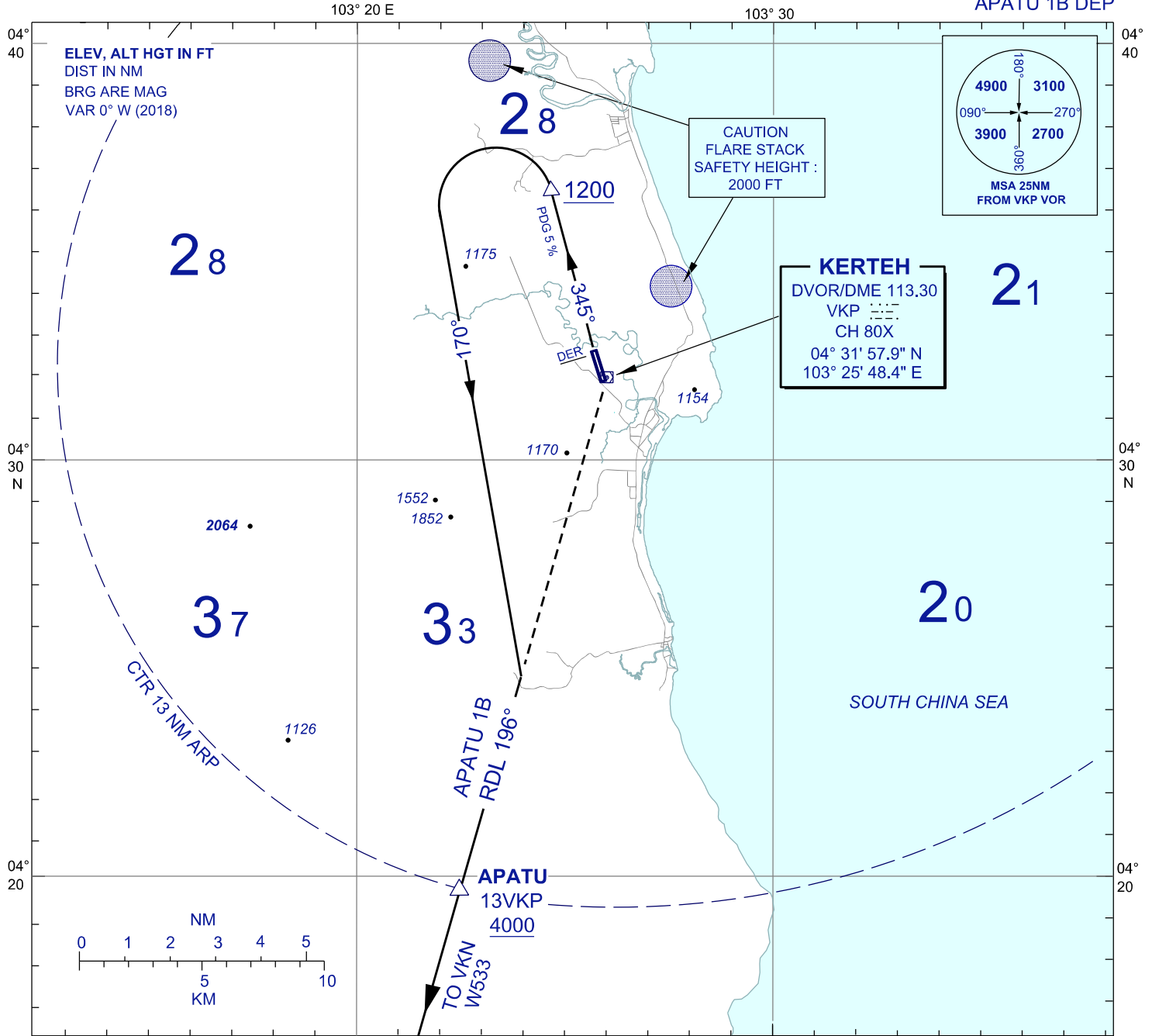
**STANDARD DEPARTURE CHART
INSTRUMENT (SID) - ICAO**

TRANSITION ALTITUDE
11,000 FT

TWR 123.3
258.5
SMC 121.8
ATIS 128.25

**KERTEH/KERTEH (WMKE)
RWY 34**

VOR/DME
APATU 1B DEP



APATU ONE BRAVO DEPARTURE

AFTER TAKE-OFF TRACK 345°, ON PASSING 1200 FT TURN LEFT
HEADING 170° TO INTERCEPT RDL196 VKP TO APATU.
MINIMUM CLIMB GRADIENT 5%, RESUME NORMAL CLIMB ON
PASSING 3000 FT.

SPEED(IAS)	120KT	140KT	160KT	180KT
5% ROC (FT/MIN)	607	709	810	911
6% ROC (FT/MIN)	729	849	973	1094
7% ROC (FT/MIN)	851	991	1136	1276

COMMUNICATION FAILURE :

- SQUAWK 7600
- IF UNDER PILOT NAVIGATION, MAINTAIN LAST ASSIGNED LEVEL FOR 3 MINUTES, IF NO ONWARD CLEARANCE IS RECEIVED. SUBSEQUENTLY CLIMB TO COMPLY WITH SID.
- IF BELOW MSA, CLIMB TO MSA, THEN TRACK TO INTERCEPT CLEARED OR PREVIOUSLY ASSIGNED SID TO DESTINATION.

CHANGES : UPDATING THE CHART FORMAT