

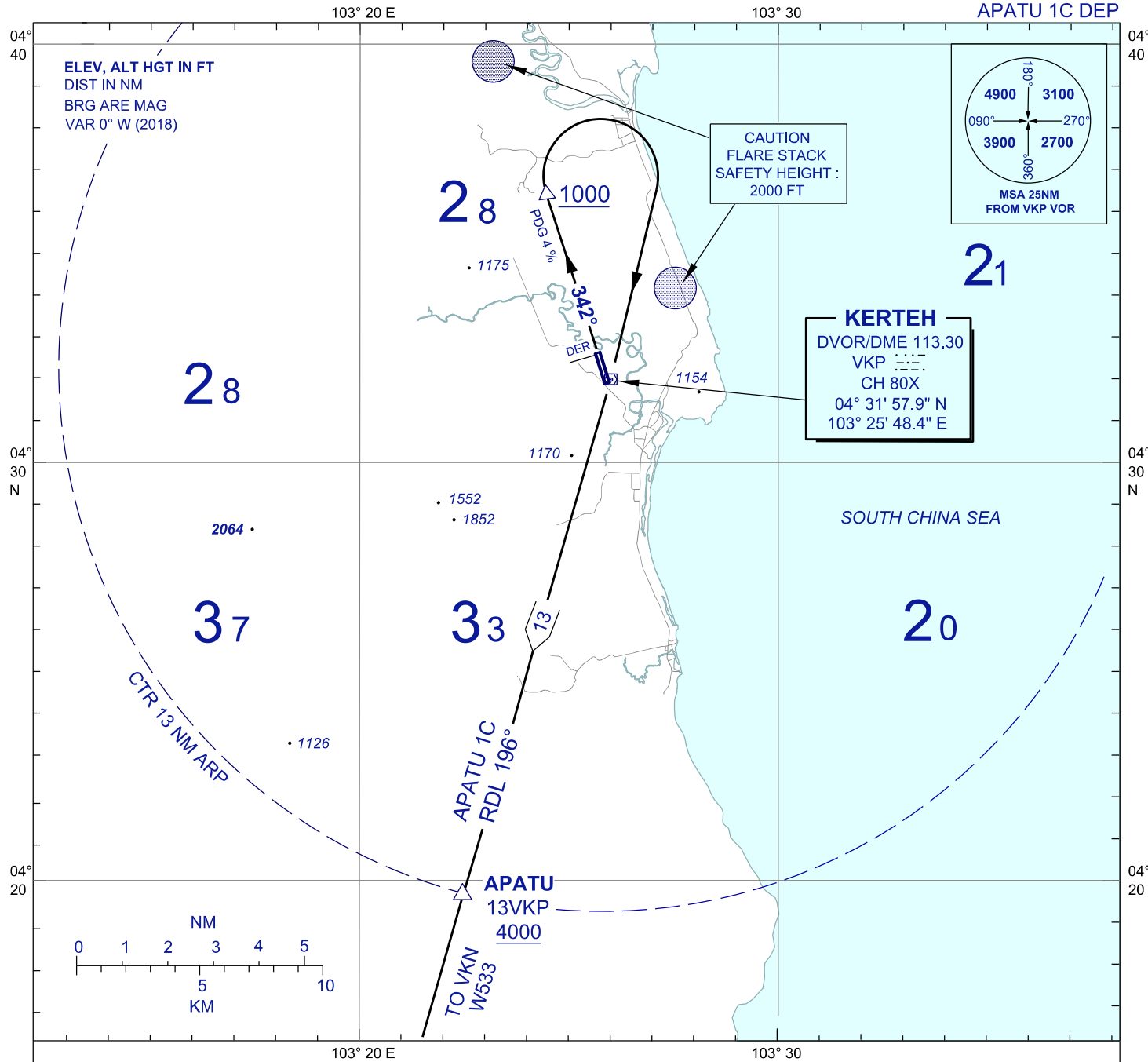
**STANDARD DEPARTURE CHART
INSTRUMENT (SID) - ICAO**

TRANSITION ALTITUDE
11,000 FT

TWR 123.3
258.5
SMC 121.8
ATIS 128.25

**KERTEH/KERTEH (WMKE)
RWY 34**

VOR/DME
APATU 1C DEP



APATU ONE BRAVO DEPARTURE

AFTER TAKE-OFF TRACK 342°, ON PASSING 1000 FT TURN RIGHT TRACK TO VKP TO INTERCEPT RDL196 VKP TO APATU. MINIMUM CLIMB GRADIENT 4%, RESUME NORMAL CLIMB ON PASSING 3000 FT.

SPEED(IAS)	120KT	140KT	160KT	180KT
4% ROC (FT/MIN)	486	566	648	729
6% ROC (FT/MIN)	607	709	810	911
6% ROC (FT/MIN)	729	849	973	1094

COMMUNICATION FAILURE :

- SQUAWK 7600
- IF UNDER PILOT NAVIGATION, MAINTAIN LAST ASSIGNED LEVEL FOR 3 MINUTES, IF NO ONWARD CLEARANCE IS RECEIVED. SUBSEQUENTLY CLIMB TO COMPLY WITH SID.
- IF BELOW MSA, CLIMB TO MSA, THEN TRACK TO INTERCEPT CLEARED OR PREVIOUSLY ASSIGNED SID TO DESTINATION.

CHANGES : UPDATING THE CHART FORMAT