

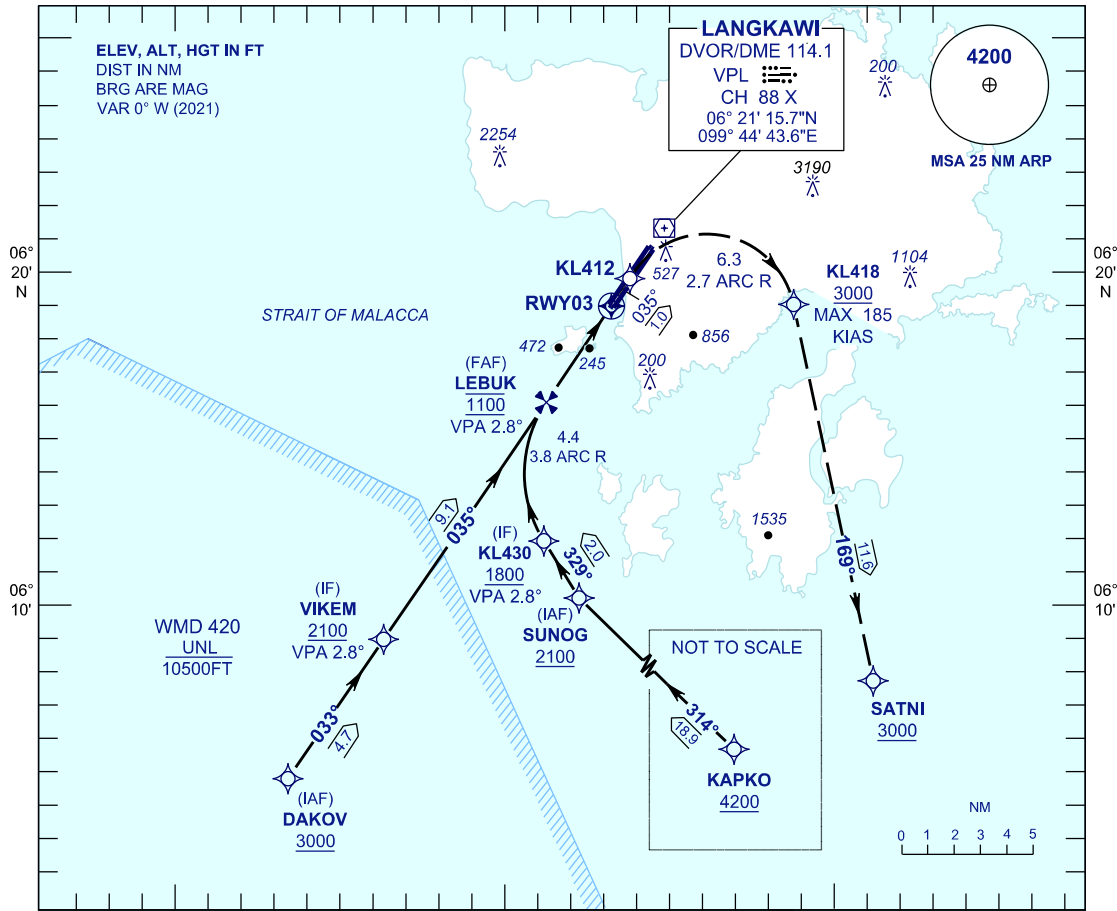
**INSTRUMENT
APPROACH
CHART - ICAO**

AERODROME ELEV 23 FT
HEIGHTS RELATED TO DISP
THR RWY 03 - ELEV 16 FT

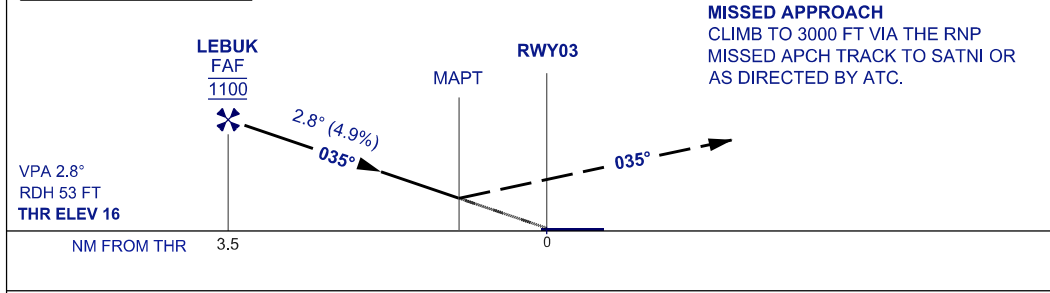
APP 119.4, 257.8
TWR 118.5
SMC 121.8
ATIS 128.2

**LANGKAWI/LANGKAWI
INTERNATIONAL AIRPORT (WMKL)**

RNP Z RWY 03 (AR)



TRANSITION LEVEL FL 130
TRANSITION ALT 11000



OCA/H		GROUND SPEED - KT						
ACFT CAT.	C	D	70	90	100	120	140	160
RNP 0.3	845 (829)		RATE OF DESCENT (2.8°) (FEET/MIN)					
			347	446	495	594	693	792
			DISTANCE TO THRESHOLD (NM)		3.5	3	2	1
			ALTITUDE (FEET)		1100	960	670	370

- 1. AUTHORIZATION REQUIRED
- 2. DUAL GNSS REQUIRED
- 3. RF REQUIRED
- 4. APPROACH NOT AUTHORIZED WHEN AIRPORT TEMPERATURE BELOW 19°C OR ABOVE 40°C
- 5. MISSED APPROACH REQUIRES BANK ANGLE OF UP TO 20°
- 6. WMKL ALTIMETER SETTING REQUIRED.
- 7. PAPI AND VERTICAL PATH ANGLE NOT COINCIDENT
- 8. TOGA TO NAV REQUIRED
- 9. PROCEDURE REQUIRES RNP 0.3 FROM IAFS TO SATNI
- 10. MISSED APPROACH TURN PRIOR TO DER

CHANGES : AERODROME ELEVATION