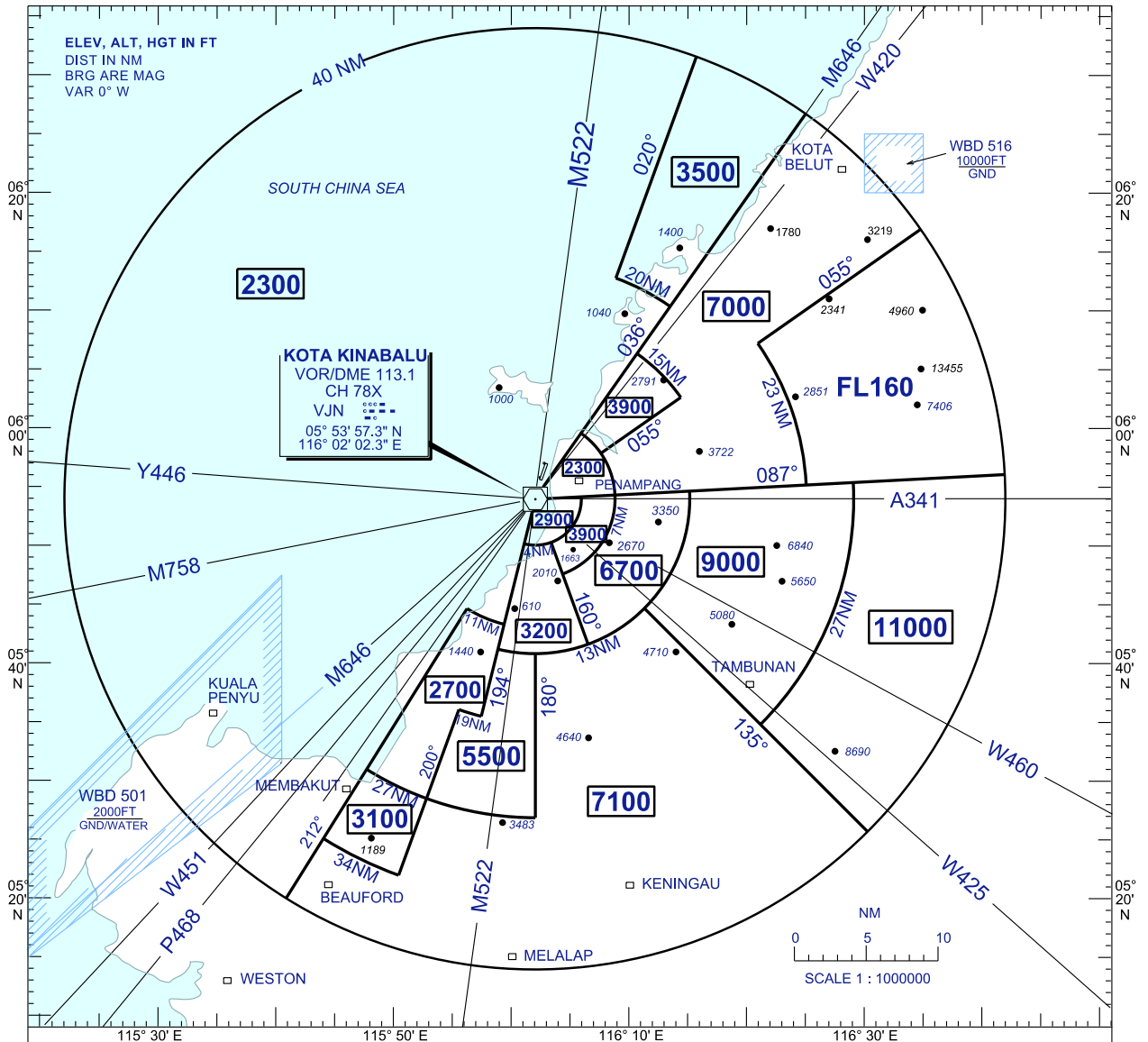


**ATC SURVEILLANCE MINIMUM  
ALTITUDE CHART - ICAO**

AERODROME ELEV 14 FT  
TRANSITION ALT 11000 FT

APP 118.3  
119.1

**KOTA KINABALU/  
KOTA KINABALU (WBKK)**



**NOTE:**

1. THE ATC SMA COMPRISES OF AN AREA OF 40NM RADIUS FROM VJN VOR
2. ALL BEARINGS ARE MAGNETIC AND TAKEN FROM VJN VOR
3. ONLY SIGNIFICANT GEOGRAPHICAL LOCATION AND SPOT HEIGHTS ARE SHOWN
4. ALTITUDES SHOWN ARE THE MINIMUM 1000FT SAFE USABLE ALTITUDE ABOVE THE HIGHEST OBSTACLES WITHIN 5NM OF THE AIRCRAFT POSITION
5. CHART ONLY TO BE USED FOR CROSS CHECKING OF ALTITUDES ASSIGNED WHILE UNDER RADAR VECTOR

**LOST OF RADIO COMMUNICATION:**

1. SET TRANSPONDER A7600
2. (A) IN VMC  
CONTINUE APPROACH VISUALLY FOR THE DUTY RUNWAY AND LAND
- (B) IN IMC  
MAINTAIN LAST ASSIGNED ALTITUDE OR CLIMB TO 5000FT IF THE LAST ASSIGNED IS LOWER, THEN TRACK DIRECT TO VJN VOR, THEN CARRY OUT STANDARD RADIO COMMUNICATION FAILURE PROCEDURE

CHANGE : UPDATING THE CHART FORMAT