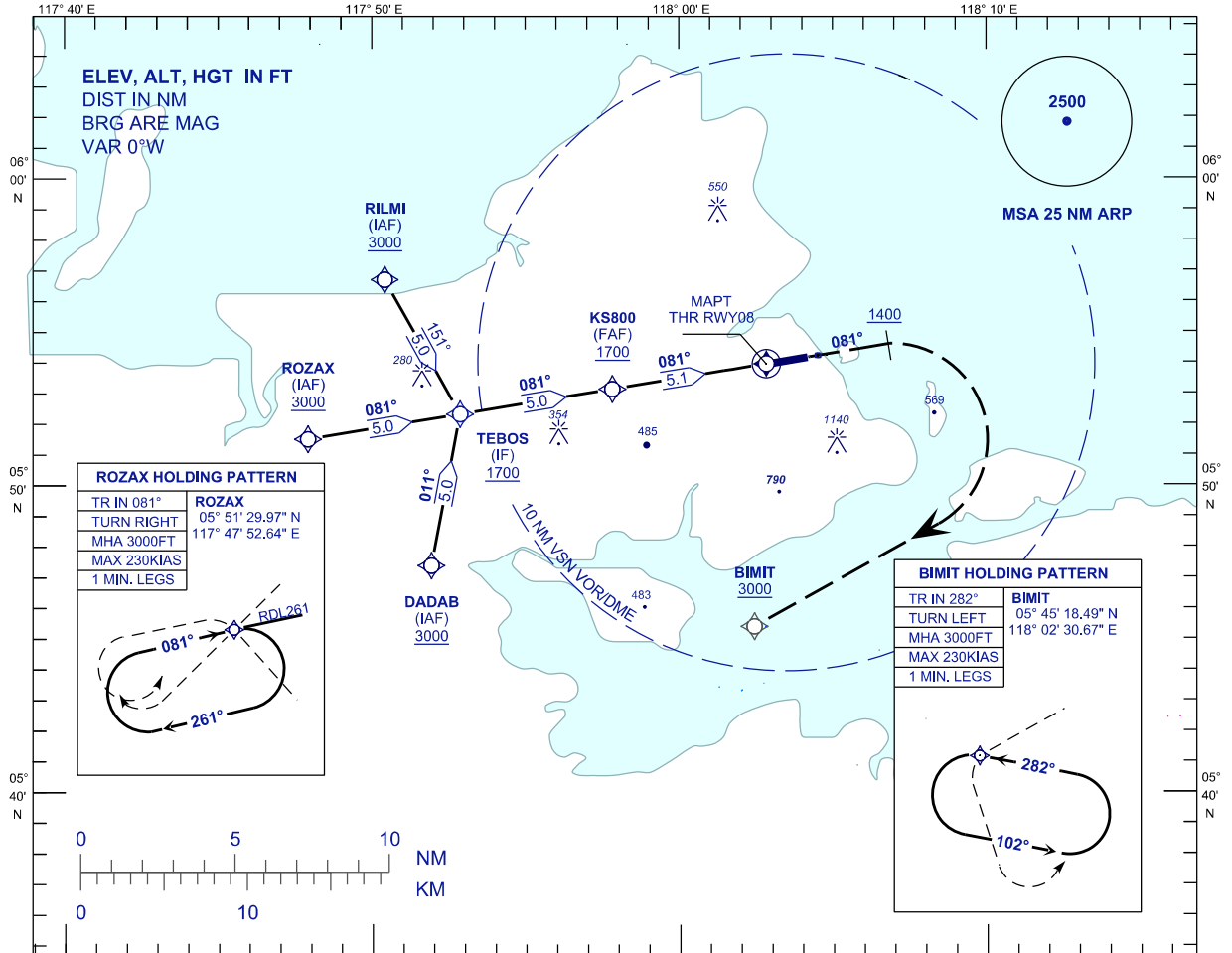


**INSTRUMENT
APPROACH
CHART - ICAO**

AERODROME ELEV 43FT
HEIGHT RELATED TO
THR RWY 08 - ELEV 32FT

APP 123.20
TWR 122.05
SMC 121.90
ATIS 128.20

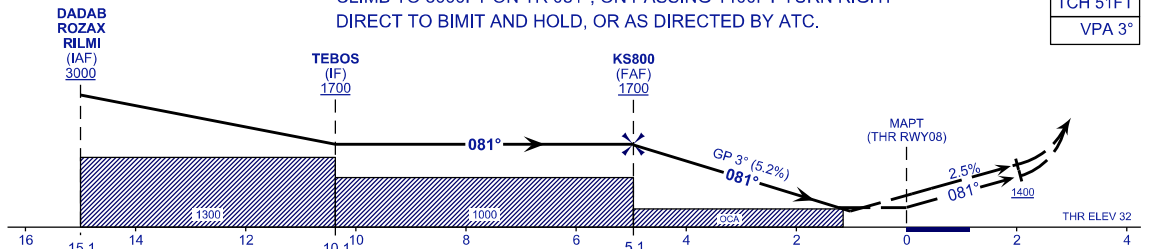
**SANDAKAN/SANDAKAN (WBKS)
RNP Y RWY 08**



TRANSITION ALT 11000

MISSED APPROACH:
CLIMB TO 3000FT ON TR 081°, ON PASSING 1400FT TURN RIGHT
DIRECT TO BIMIT AND HOLD, OR AS DIRECTED BY ATC.

TCH 51FT
VPA 3°



OCA(H)	A	B	C	D
LNAV	450 (418)			
LNAV/VNAV	340 (308)			

NOTES:
- GNSS REQUIRED.
- SANDAKAN QNH SETTING REQUIRED.
- VPA AND PAPI NOT COINCIDENT.
- BARO-VNAV NOT AUTHORIZED WHEN AIRPORT TEMPERATURE BELOW 18°C OR ABOVE 40°C.

DISTANCE TO THR RWY08	NM	5.1	4.0	3.0	2.0	1.0
ALTITUDE	FT	1700	1357	1038	719	400
GROUND SPEED	KT	80	640	740	850	850
KS800 - RWY08 (5.1 NM)	MIN:SEC	3:49	3.2	2.2	1.2	1.2
RATE OF DESCEND (319 FT/NM)	FT/MIN	420	3.0	2.0	1.1	1.1

CHANGES : BASE TURN SPEED IAS 230KT TO MAX 230KIAS,
AMEND TCH 50FT TO TCH 51FT AT PROFILE VIEW,
ALTITUDE IN DISTANCE TABLE AT PROFILE VIEW.