

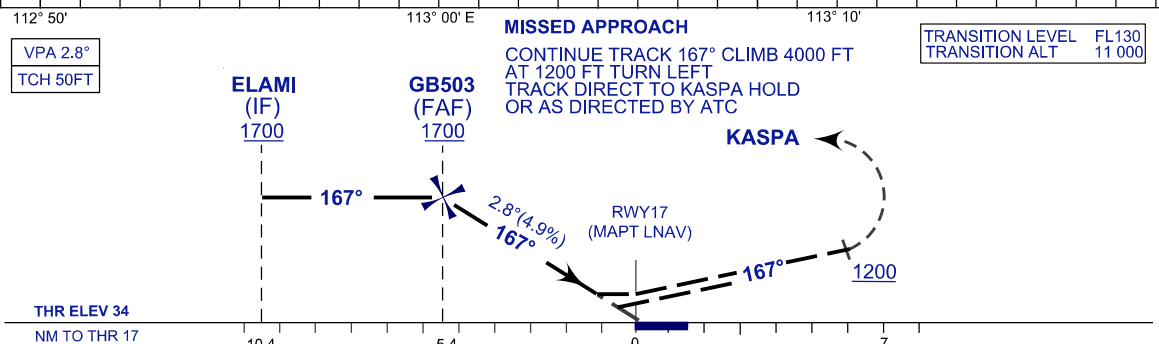
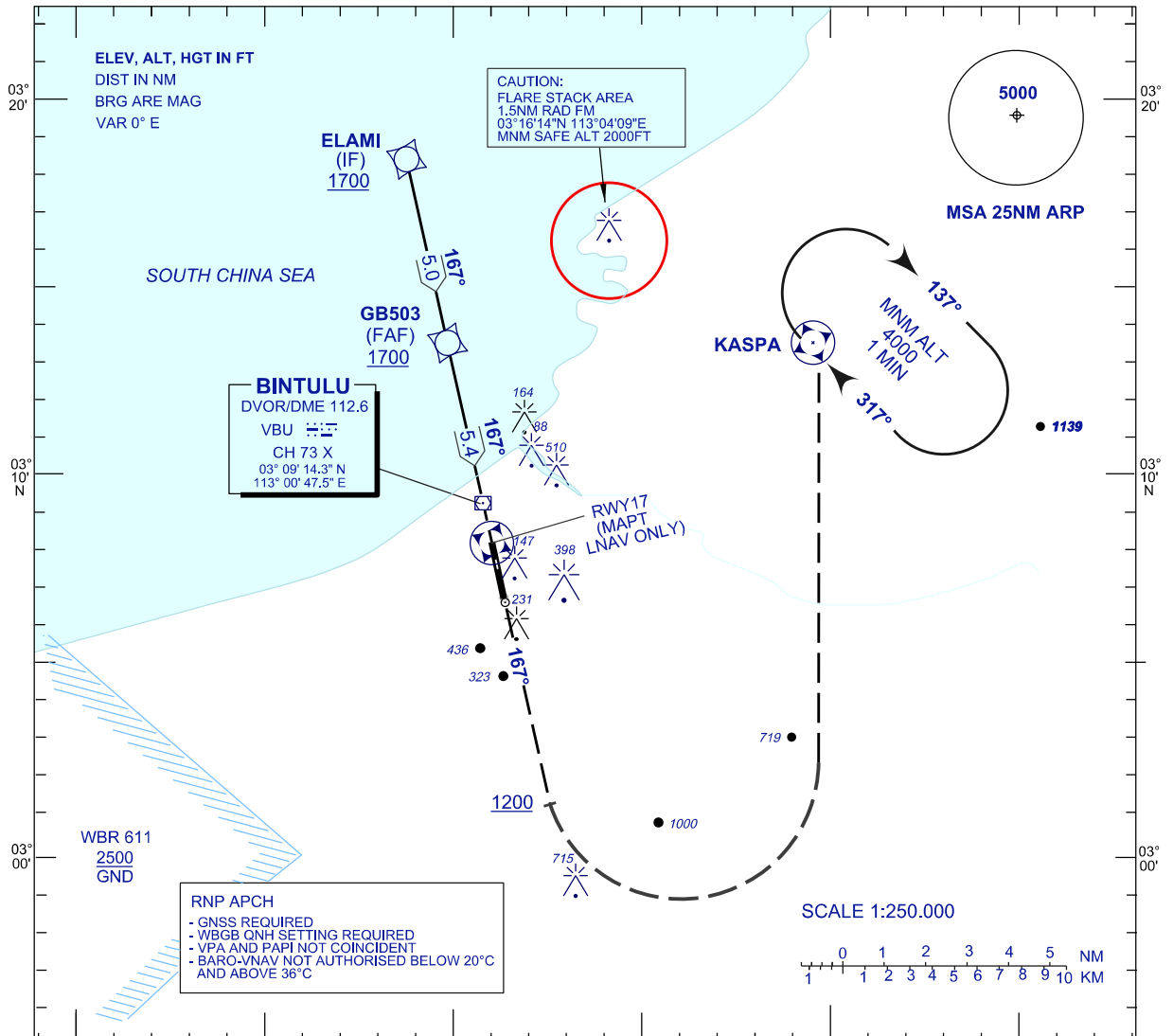
**INSTRUMENT  
APPROACH  
CHART - ICAO**

**AERODROME ELEV 75 FT**  
HEIGHTS RELATED TO  
THR RWY 17 - ELEV 34 FT

TWR/APP 122.3 (P)  
119.25 (S)  
121.5  
SMC 121.8  
ATIS 127.8

**BINTULU/BINTULU (WBGB)**

**RNP Y RWY 17**



VPA 2.8°								TRANSITION LEVEL FL130				
TCH 50FT								TRANSITION ALT 11 000				
THR ELEV 34	ELAMI (IF) 1700	GB503 (FAF) 1700						KASPA				
NM TO THR 17	10.4	5.4	0	7								
OCA (OCH)	A	B	C	D	DIST THR/ RWY35	NM	5.4	5.0	4.0	3.0	2.0	1.2
LNAV	440 (406)				ALTITUDE	FT	1700	1569	1270	970	670	440
LNAV/VNAV	390(356)	412(378)	420(386)	440(406)	GS	KT	80	100	120	140	160	180
					FAF-RWY17 (5.4NM)	MIN:SEC	4:5	3:16	2:44	2:20	2:3	1:49
					RATE OF DESCEND (305FT / NM)	FT/MIN	400	510	610	710	810	910

CHANGES : IN PROFILE VIEW AMEND GB003 TO GB503  
IN PLAN VIEW ADD PATH TERM FOR WPT GB503 & ELAMI.