

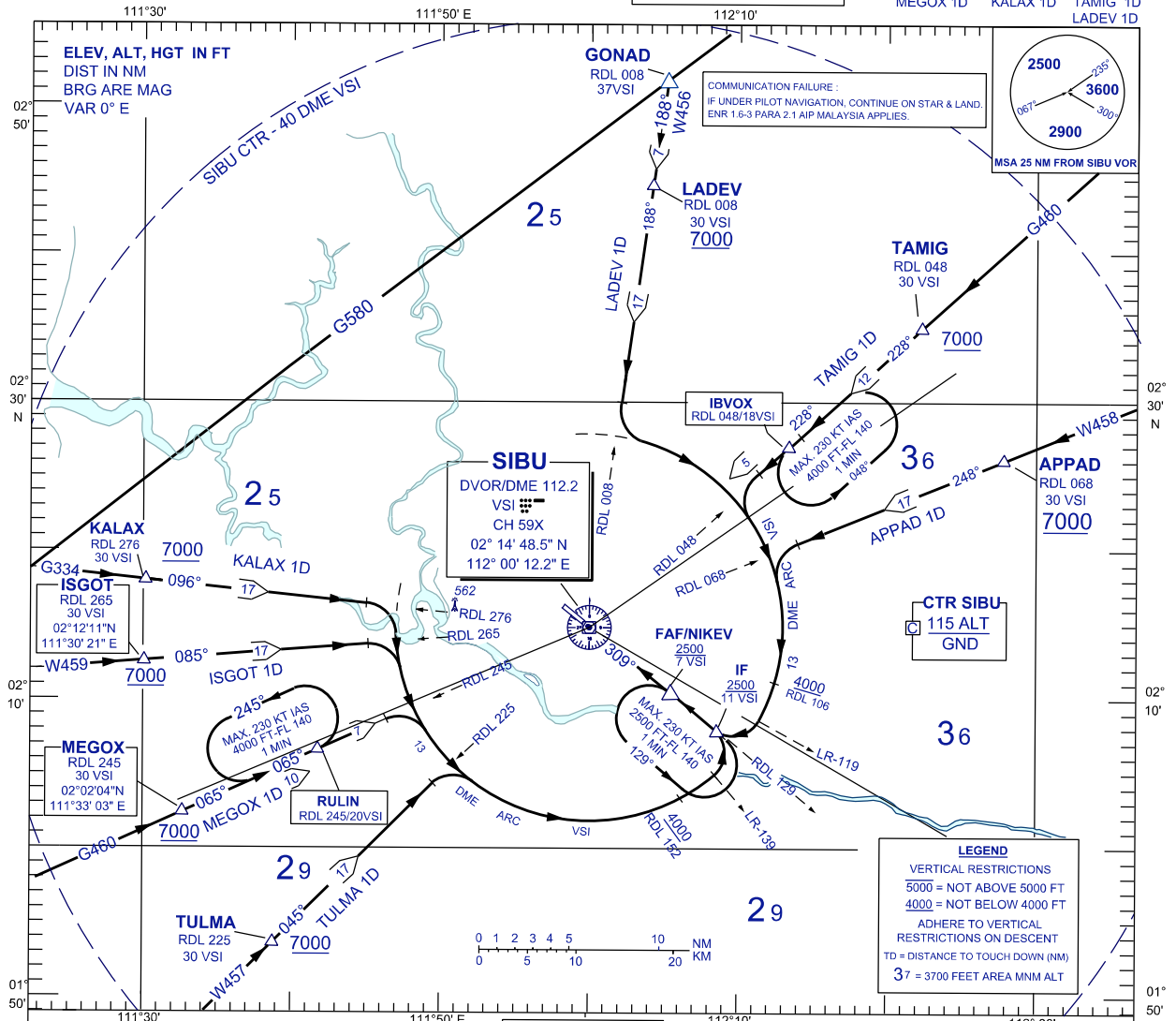
**STANDARD ARRIVAL CHART
INSTRUMENT (STAR)-ICAO**

TRANSITION ALTITUDE
11 000 FT

APP	122.6(P), 124.4 (S)
TWR	123.2
SMC	121.9
ATIS	127.65
EMERG	121.5

**SIBU/SIBU (WBGS)
RWY 31
VOR/DME ARC**

TULMA 1D	ISGOT 1D	APPAD 1D
MEGOX 1D	KALAX 1D	TAMIG 1D
		LADEV 1D



**STAR RWY 31
- VOR/DME ARC**

**TULMA ONE DELTA ARRIVAL
MEGOX ONE DELTA ARRIVAL
ISGOT ONE DELTA ARRIVAL
KALAX ONE DELTA ARRIVAL**

- TULMA ONE DELTA ARRIVAL**
- FROM TULMA TRACK ON RDL 225 VSI VOR INBOUND
- MEGOX ONE DELTA ARRIVAL / FROM RULIN HOLD**
- FROM MEGOX OR RULIN TRACK ON RDL 245 VSI VOR INBOUND
- ISGOT ONE DELTA ARRIVAL**
- FROM ISGOT TRACK ON RDL 265 VSI VOR INBOUND
- KALAX ONE DELTA ARRIVAL**
- FROM KALAX TRACK ON RDL 276 VSI VOR INBOUND
- FROM TULMA, MEGOX, RULIN, ISGOT OR KALAX ARRIVAL**
- WHEN APPROPRIATELY POSITIONED, TURN RIGHT
 - TO FLY 13 DME ARC VSI
 - ON CROSSING RDL 139, TURN LEFT
 - TO INTERCEPT RDL 129 FOR VOR/DME APPROACH

**APPAD ONE DELTA ARRIVAL
TAMIG ONE DELTA ARRIVAL
LADEV ONE DELTA ARRIVAL**

- APPAD ONE DELTA ARRIVAL**
- FROM APPAD TRACK ON RDL 068° VSI VOR INBOUND
- TAMIG ONE DELTA ARRIVAL / FROM IBVOX HOLD**
- FROM TAMIG OR IBVOX TRACK ON RDL 048° VSI VOR INBOUND
- LADEV ONE DELTA ARRIVAL**
- FROM LADEV TRACK ON RDL 008° VSI VOR INBOUND
- FROM APPAD, TAMIG, IBVOX OR LADEV ARRIVAL**
- WHEN APPROPRIATELY POSITIONED, TURN LEFT
 - TO FLY 13 DME ARC VSI
 - ON CROSSING RDL 119, TURN RIGHT
 - TO INTERCEPT RDL 129 FOR VOR/DME APPROACH

CHANGES : UPDATING THE CHART FORMAT